




Product datasheet

Anti-Ferritin Heavy Chain antibody - C-terminal ab194947

3 Images

Overview

Product name	Anti-Ferritin Heavy Chain antibody - C-terminal
Description	Rabbit polyclonal to Ferritin Heavy Chain - C-terminal
Host species	Rabbit
Tested applications	Suitable for: Flow Cyt (Intra), IHC-P, WB
Species reactivity	Reacts with: Human Predicted to work with: Rat, Rabbit, Chicken, Cat, Dog, Orangutan 
Immunogen	Synthetic peptide corresponding to Human Ferritin Heavy Chain aa 150 to the C-terminus (C terminal) conjugated to keyhole limpet haemocyanin. NCBI Accession No. NP_002023.2. Database link: P02794  Run BLAST with  Run BLAST with
Positive control	WB: A2058 cell lysate. IHC-P: Human liver tissue. Flow Cyt (Intra): HepG2 cells.
General notes	<p>The Life Science industry has been in the grips of a reproducibility crisis for a number of years. Abcam is leading the way in addressing this with our range of recombinant monoclonal antibodies and knockout edited cell lines for gold-standard validation. Please check that this product meets your needs before purchasing.</p> <p>If you have any questions, special requirements or concerns, please send us an inquiry and/or contact our Support team ahead of purchase. Recommended alternatives for this product can be found below, along with publications, customer reviews and Q&As</p>

Properties

Form	Liquid
Storage instructions	Shipped at 4°C. Store at +4°C short term (1-2 weeks). Upon delivery aliquot. Store at -20°C long term. Avoid freeze / thaw cycle.
Storage buffer	pH: 7.4 Preservative: 0.09% Sodium azide Constituent: 99% PBS
Purity	Immunogen affinity purified
Clonality	Polyclonal

Applications

The Abpromise guarantee

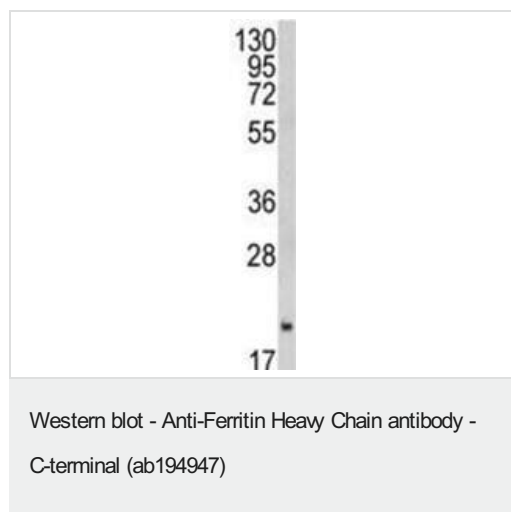
Our **Abpromise guarantee** covers the use of ab194947 in the following tested applications.

The application notes include recommended starting dilutions; optimal dilutions/concentrations should be determined by the end user.

Application	Abreviews	Notes
Flow Cyt (Intra)		1/10 - 1/50. ab171870 - Rabbit polyclonal IgG, is suitable for use as an isotype control with this antibody.
IHC-P		1/100.
WB		1/1000. Predicted molecular weight: 21 kDa.

Target

Images

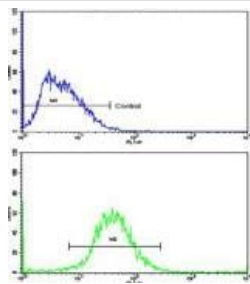


Anti-Ferritin Heavy Chain antibody - C-terminal (ab194947) at 1/1000 dilution + A2058 cell lysate at 35 µg

Predicted band size: 21 kDa



Immunohistochemical analysis of formalin-fixed, paraffin-embedded Human liver tissue, labeling Ferritin Heavy Chain using ab194947 at a 1/100 dilution.



Intracellular Flow Cytometry analysis of HepG2 cells labeling Ferritin Heavy Chain (bottom histogram), using ab194947 at a 1/10 dilution, and negative control cells (top histogram). FITC-conjugated Goat anti-Rabbit secondary antibodies were used for the analysis.

Flow Cytometry (Intracellular) - Anti-Ferritin Heavy Chain antibody - C-terminal (ab194947)

Please note: All products are "FOR RESEARCH USE ONLY. NOT FOR USE IN DIAGNOSTIC PROCEDURES"

Our Abpromise to you: Quality guaranteed and expert technical support

- Replacement or refund for products not performing as stated on the datasheet
- Valid for 12 months from date of delivery
- Response to your inquiry within 24 hours
- We provide support in Chinese, English, French, German, Japanese and Spanish
- Extensive multi-media technical resources to help you
- We investigate all quality concerns to ensure our products perform to the highest standards

If the product does not perform as described on this datasheet, we will offer a refund or replacement. For full details of the Abpromise, please visit <https://www.abcam.com/abpromise> or contact our technical team.

Terms and conditions

- Guarantee only valid for products bought direct from Abcam or one of our authorized distributors