

Product datasheet

Anti-fetal hemoglobin antibody [EPR9708(B)] ab137096

Recombinant RabMAb

[6 References](#) [3 Images](#)

Overview

Product name	Anti-fetal hemoglobin antibody [EPR9708(B)]
Description	Rabbit monoclonal [EPR9708(B)] to fetal hemoglobin
Host species	Rabbit
Specificity	This antibody recognises Hemoglobin gamma-1/2 chain.
Tested applications	Suitable for: WB Unsuitable for: IHC-P
Species reactivity	Reacts with: Human
Immunogen	Synthetic peptide within Human fetal hemoglobin. The exact sequence is proprietary.
Positive control	WB: Human red blood cell and K562 cell lysates.
General notes	<p>This product is a recombinant monoclonal antibody, which offers several advantages including:</p> <ul style="list-style-type: none"> - High batch-to-batch consistency and reproducibility - Improved sensitivity and specificity - Long-term security of supply - Animal-free production <p>For more information see here.</p> <p>Our RabMAb[®] technology is a patented hybridoma-based technology for making rabbit monoclonal antibodies. For details on our patents, please refer to RabMAb[®] patents.</p> <p>Mouse: We have preliminary internal testing data to indicate this antibody may not react with this species. Please contact us for more information.</p>

Properties

Form	Liquid
Storage instructions	Shipped at 4°C. Store at -20°C.
Storage buffer	Preservative: 0.01% Sodium azide Constituents: PBS, 40% Glycerol (glycerin, glycerine), 0.05% BSA
Purity	Protein A purified
Clonality	Monoclonal
Clone number	EPR9708(B)

Isotype

IgG

Applications

The Abpromise guarantee

Our **Abpromise guarantee** covers the use of ab137096 in the following tested applications.

The application notes include recommended starting dilutions; optimal dilutions/concentrations should be determined by the end user.

Application	Abreviews	Notes
WB		1/1000 - 1/10000. Predicted molecular weight: 16 kDa.

Application notes

Is unsuitable for IHC-P.

Target

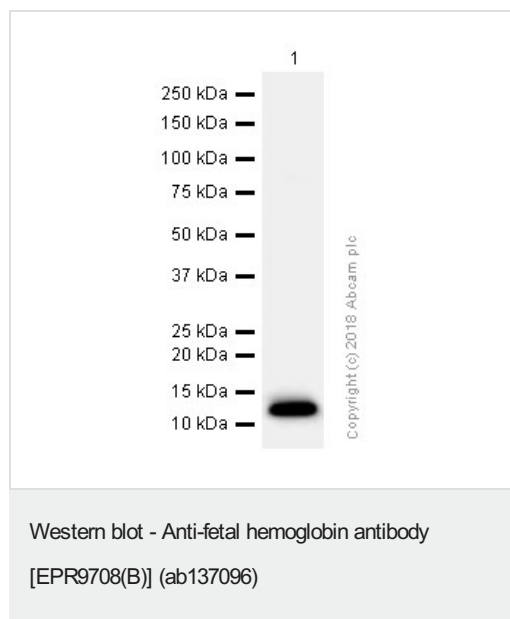
Relevance

The gamma globin genes (HBG1 and HBG2) are normally expressed in the fetal liver, spleen and bone marrow. Two gamma chains together with two alpha chains constitute fetal hemoglobin (HbF) which is normally replaced by adult hemoglobin (HbA) at birth. In some beta-thalassemias and related conditions, gamma chain production continues into adulthood. The two types of gamma chains differ at residue 136 where glycine is found in the G-gamma product (HBG2) and alanine is found in the A-gamma product (HBG1). The former is predominant at birth. The order of the genes in the beta-globin cluster is: 5'-epsilon -- gamma-G -- gamma-A -- delta -- beta--3'

Cellular localization

Cytoplasmic

Images



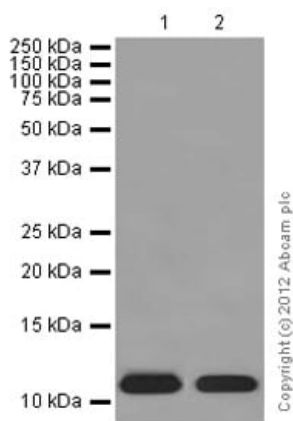
Anti-fetal hemoglobin antibody [EPR9708(B)] (ab137096) at 1/2000 dilution (Purified) + K-562 (Human chronic myelogenous leukemia lymphoblast) whole cell lysates at 15 µg

Secondary

Goat Anti-Rabbit IgG H&L (HRP) (**ab97051**) at 1/20000 dilution

Predicted band size: 16 kDa

Observed band size: 13 kDa



Western blot - Anti-fetal hemoglobin antibody
[EPR9708(B)] (ab137096)

All lanes : Anti-fetal hemoglobin antibody [EPR9708(B)]
(ab137096) at 1/2000 dilution (Unpurified)

Lane 1 : Human red blood cell

Lane 2 : K562 (human lymphoblast from chronic myelogenous leukemia) whole cell lysate

Lysates/proteins at 20 µg per lane.

Secondary

All lanes : Goat Anti-Rabbit IgG H&L (HRP) at 1/1000 dilution

Predicted band size: 16 kDa

Blocking and Diluting Buffer:5% NFDM/TBST

Exposure time:3 min

Why choose a
recombinant antibody?



Research with confidence
Consistent and reproducible results



Long-term and scalable supply
Recombinant technology



Success from the first experiment
Confirmed specificity



Ethical standards compliant
Animal-free production

Anti-fetal hemoglobin antibody [EPR9708(B)]
(ab137096)

Please note: All products are "FOR RESEARCH USE ONLY. NOT FOR USE IN DIAGNOSTIC PROCEDURES"

Our Abpromise to you: Quality guaranteed and expert technical support

- Replacement or refund for products not performing as stated on the datasheet
- Valid for 12 months from date of delivery
- Response to your inquiry within 24 hours
- We provide support in Chinese, English, French, German, Japanese and Spanish
- Extensive multi-media technical resources to help you
- We investigate all quality concerns to ensure our products perform to the highest standards

If the product does not perform as described on this datasheet, we will offer a refund or replacement. For full details of the Abpromise, please visit <https://www.abcam.com/abpromise> or contact our technical team.

Terms and conditions

- Guarantee only valid for products bought direct from Abcam or one of our authorized distributors