


Anti-FGF1 alpha antibody ab169748

[3 References](#) [2 Images](#)

Overview

Product name	Anti-FGF1 alpha antibody
Description	Mouse polyclonal to FGF1 alpha
Host species	Mouse
Tested applications	Suitable for: WB, ICC/IF
Species reactivity	Reacts with: Human Predicted to work with: Mouse, Rat, Sheep, Chicken, Hamster, Cow, Pig, Orangutan 
Immunogen	Recombinant full length protein corresponding to Human FGF1 alpha aa 1-155. Database link: NP_000791.1
Positive control	FGF1 alpha transfected 293T cell lysate; HeLa cells.
General notes	<p>The Life Science industry has been in the grips of a reproducibility crisis for a number of years. Abcam is leading the way in addressing this with our range of recombinant monoclonal antibodies and knockout edited cell lines for gold-standard validation. Please check that this product meets your needs before purchasing.</p> <p>If you have any questions, special requirements or concerns, please send us an inquiry and/or contact our Support team ahead of purchase. Recommended alternatives for this product can be found below, along with publications, customer reviews and Q&As</p>

Properties

Form	Liquid
Storage instructions	Shipped at 4°C. Store at +4°C short term (1-2 weeks). Upon delivery aliquot. Store at -20°C long term. Avoid freeze / thaw cycle.
Storage buffer	pH: 7.4 Constituent: 100% PBS
Purity	Protein A purified
Clonality	Polyclonal
Isotype	IgG

Applications

The Abpromise guarantee

Our **Abpromise guarantee** covers the use of ab169748 in the following tested applications.

The application notes include recommended starting dilutions; optimal dilutions/concentrations should be determined by the end user.

Application	Abreviews	Notes
WB		Use a concentration of 1 µg/ml. Predicted molecular weight: 17 kDa.
ICC/IF		Use a concentration of 10 µg/ml.

Target

Function

The heparin-binding fibroblast growth factors play important roles in the regulation of cell survival, cell division, angiogenesis, cell differentiation and cell migration. They are potent mitogens in vitro.

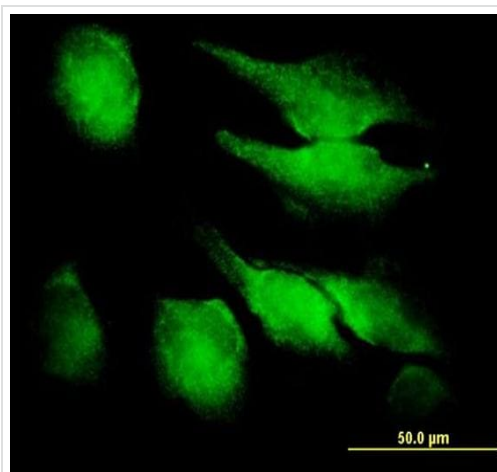
Sequence similarities

Belongs to the heparin-binding growth factors family.

Cellular localization

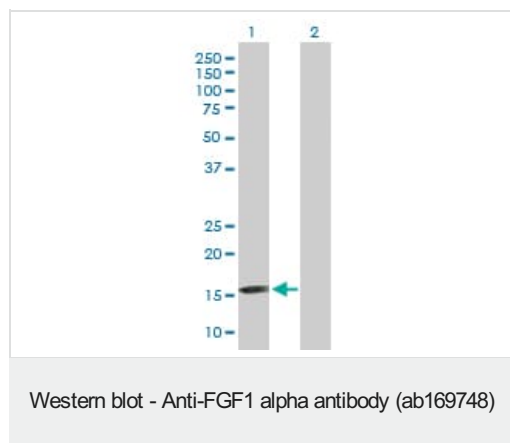
Secreted. Cytoplasm. Cytoplasm > cell cortex. Lacks a cleavable signal sequence. Within the cytoplasm, it is transported to the cell membrane and then secreted by a non-classical pathway that requires Cu(2+) ions and S100A13. Secreted in a complex with SYT1.

Images



Immunocytochemistry/Immunofluorescence analysis of HeLa cells labeling FGF1 alpha with ab169748 at 10µg/ml.

Immunocytochemistry/ Immunofluorescence - Anti-FGF1 alpha antibody (ab169748)



All lanes : Anti-FGF1 alpha antibody (ab169748) at 1 µg/ml

Lane 1 : FGF1 alpha transfected 293T cell lysate

Lane 2 : Non-transfected 293T cell lysate

Lysates/proteins at 15 µl per lane.

Predicted band size: 17 kDa

Please note: All products are "FOR RESEARCH USE ONLY. NOT FOR USE IN DIAGNOSTIC PROCEDURES"

Our Abpromise to you: Quality guaranteed and expert technical support

- Replacement or refund for products not performing as stated on the datasheet
- Valid for 12 months from date of delivery
- Response to your inquiry within 24 hours
- We provide support in Chinese, English, French, German, Japanese and Spanish
- Extensive multi-media technical resources to help you
- We investigate all quality concerns to ensure our products perform to the highest standards

If the product does not perform as described on this datasheet, we will offer a refund or replacement. For full details of the Abpromise, please visit <https://www.abcam.com/abpromise> or contact our technical team.

Terms and conditions

- Guarantee only valid for products bought direct from Abcam or one of our authorized distributors