

Product datasheet

Anti-FGF19 antibody ab119336

[1 References](#) [2 Images](#)

Overview

Product name	Anti-FGF19 antibody
Description	Rabbit polyclonal to FGF19
Host species	Rabbit
Tested applications	Suitable for: WB, IHC-P
Species reactivity	Reacts with: Human
Immunogen	Synthetic peptide, corresponding to a sequence in the middle region of Human FGF19.
Positive control	WB: U87 and SMMC whole cell lysate. IHC: Human Gallbladder Cancer Tissue.
General notes	<p>The Life Science industry has been in the grips of a reproducibility crisis for a number of years. Abcam is leading the way in addressing this with our range of recombinant monoclonal antibodies and knockout edited cell lines for gold-standard validation. Please check that this product meets your needs before purchasing.</p> <p>If you have any questions, special requirements or concerns, please send us an inquiry and/or contact our Support team ahead of purchase. Recommended alternatives for this product can be found below, along with publications, customer reviews and Q&As</p>

Properties

Form	Liquid
Storage instructions	Shipped at 4°C. Store at +4°C short term (1-2 weeks). Upon delivery aliquot. Store at -20°C long term.
Storage buffer	Preservatives: 0.025% Thimerosal (merthiolate), 0.025% Sodium azide Constituents: 2.5% BSA, 0.45% Sodium chloride, 0.1% Dibasic monohydrogen sodium phosphate
Purity	Immunogen affinity purified
Clonality	Polyclonal
Isotype	IgG

Applications

The Abpromise guarantee Our **Abpromise guarantee** covers the use of ab119336 in the following tested applications.

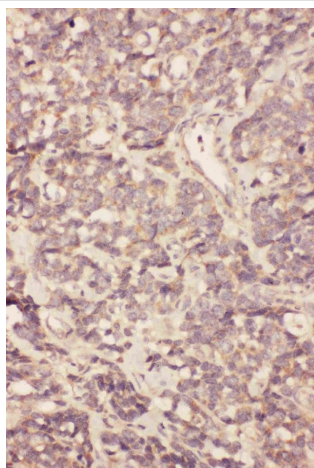
The application notes include recommended starting dilutions; optimal dilutions/concentrations should be determined by the end user.

Application	Abreviews	Notes
WB		Use a concentration of 0.5 µg/ml. Predicted molecular weight: 24 kDa.
IHC-P		Use a concentration of 1 µg/ml.

Target

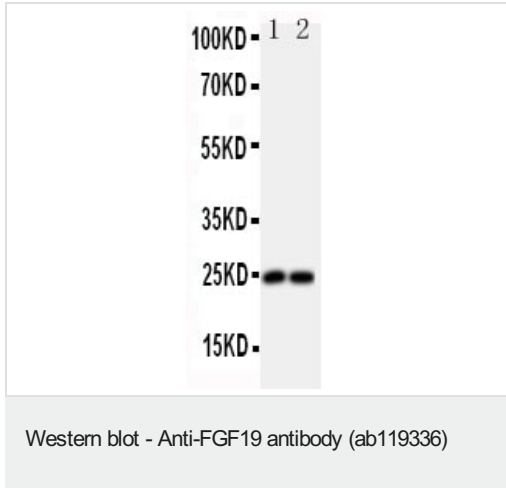
Function	Involved in the suppression of bile acid biosynthesis through down-regulation of CYP7A1 expression, following positive regulation of the JNK and ERK1/2 cascades. Stimulates glucose uptake in adipocytes. Activity requires the presence of KLB.
Tissue specificity	Expressed in fetal brain, cartilage, retina, and adult gall bladder.
Sequence similarities	Belongs to the heparin-binding growth factors family.
Cellular localization	Secreted.

Images



Immunohistochemistry analysis of Human Gallbladder Cancer tissue labelling FGF19 with ab119336.

Immunohistochemistry (Formalin/PFA-fixed paraffin-embedded sections) - Anti-FGF19 antibody (ab119336)



All lanes : Anti-FGF19 antibody (ab119336) at 0.5 µg/ml

Lane 1 : U87 Whole Cell Lysate

Lane 2 : SMMC Whole Cell Lysate

Lysates/proteins at 40 µg per lane.

Predicted band size: 24 kDa

Please note: All products are "FOR RESEARCH USE ONLY. NOT FOR USE IN DIAGNOSTIC PROCEDURES"

Our Abpromise to you: Quality guaranteed and expert technical support

- Replacement or refund for products not performing as stated on the datasheet
- Valid for 12 months from date of delivery
- Response to your inquiry within 24 hours
- We provide support in Chinese, English, French, German, Japanese and Spanish
- Extensive multi-media technical resources to help you
- We investigate all quality concerns to ensure our products perform to the highest standards

If the product does not perform as described on this datasheet, we will offer a refund or replacement. For full details of the Abpromise, please visit <https://www.abcam.com/abpromise> or contact our technical team.

Terms and conditions

- Guarantee only valid for products bought direct from Abcam or one of our authorized distributors