

Product datasheet

Anti-Fibroblast activation protein, alpha antibody ab53066

★★★★☆ [13 Abreviews](#) [116 References](#) [2 Images](#)

Overview

Product name	Anti-Fibroblast activation protein, alpha antibody
Description	Rabbit polyclonal to Fibroblast activation protein, alpha
Host species	Rabbit
Specificity	ab53066 detects endogenous levels of total Fibroblast activation protein, alpha. Please note the immunogen used to produce this product has 92% homology with Mouse DPPV/CD26.
Tested applications	Suitable for: WB, IHC-P
Species reactivity	Reacts with: Human
Immunogen	Synthetic peptide corresponding to Human Fibroblast activation protein, alpha. A synthetic peptide derived from human Fibroblast activation protein, alpha. Peptide available as ab150744 . Database link: Q12884 (Peptide available as ab150744)
Positive control	Human breast carcinoma tissue and LOVO cell extracts.
General notes	<p>The Life Science industry has been in the grips of a reproducibility crisis for a number of years. Abcam is leading the way in addressing this with our range of recombinant monoclonal antibodies and knockout edited cell lines for gold-standard validation. Please check that this product meets your needs before purchasing.</p> <p>If you have any questions, special requirements or concerns, please send us an inquiry and/or contact our Support team ahead of purchase. Recommended alternatives for this product can be found below, along with publications, customer reviews and Q&As</p>

Properties

Form	Liquid
Storage instructions	Store at -20°C. Stable for 12 months at -20°C
Storage buffer	pH: 7 Preservative: 0.02% Sodium azide Constituents: 50% Glycerol, 0.87% Sodium chloride, PBS
	Without Mg+2 and Ca+2
Purity	Immunogen affinity purified

Purification notes	ab53066 was affinity-purified from rabbit antiserum by affinity-chromatography using epitope-specific immunogen.
Clonality	Polyclonal
Isotype	IgG

Applications

The Abpromise guarantee Our **Abpromise guarantee** covers the use of ab53066 in the following tested applications.

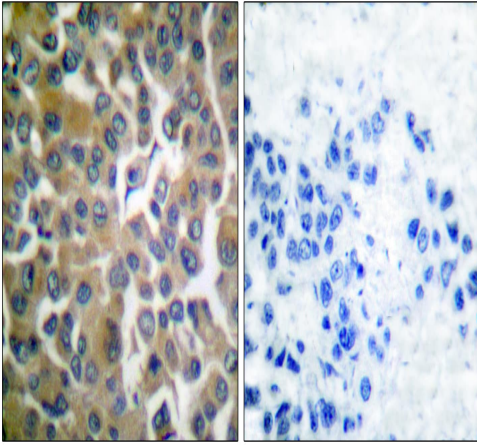
The application notes include recommended starting dilutions; optimal dilutions/concentrations should be determined by the end user.

Application	Abreviews	Notes
WB	★★★★★ (4)	1/500 - 1/1000. Detects a band of approximately 90 kDa. Please see WB protocol details in the image legend.
IHC-P	★★★★★ (5)	1/50 - 1/100. Antigen retrieval: Microwave method - put the slice into 10 mmol/L citrate buffer (pH 6.0), microwave high temperature for 5 minutes, and then medium temperature for 15 minutes. Primary antibody incubation: 1 hour at 37°C Secondary antibody: Poly-HRP-Anti Mouse/Rabbit IgG, 50 µL for 30 minutes

Target

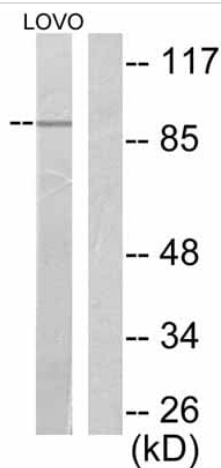
Function	In association with DPP4 is involved in the pericellular proteolysis of the extracellular matrix (ECM), the migration and invasion of endothelial cells into the ECM. May have a role in tissue remodeling during development and wound healing, and may contribute to invasiveness in malignant cancers.
Tissue specificity	Fibroblast specific.
Sequence similarities	Belongs to the peptidase S9B family.
Post-translational modifications	N-glycosylated. The N-terminus may be blocked.
Cellular localization	Cell membrane. Cell projection > lamellipodium membrane. Cell projection > invadopodium membrane. Found in cell surface lamellipodia, invadopodia and on shed vesicles. Colocalized with DPP4 in invadopodia and lamellipodia of migratory activated endothelial cells in collagenous matrix. Colocalized with DPP4 on endothelial cells of capillary-like microvessels but not large vessels within invasive breast ductal carcinoma.

Images



Immunohistochemistry (Formalin/PFA-fixed paraffin-embedded sections) - Anti-Fibroblast activation protein, alpha antibody (ab53066)

Immunohistochemistry analysis of paraffin-embedded human breast carcinoma tissue sections labeling Fibroblast activation protein, alpha with ab53066 (without peptide-right and with peptide- left).



Western blot - Anti-Fibroblast activation protein, alpha antibody (ab53066)

All lanes : Anti-Fibroblast activation protein, alpha antibody (ab53066) at 1/500 dilution

Lane 1 : LOVO cell extract

Lane 2 : LOVO cell extract at 40 µg with immunising peptide

Observed band size: 90 kDa

Blocking buffer: 5% (w/v) non-fat dry milk in TBST.

Primary antibody dilution buffer: 5%(w/v)non-fat dried milk,0.1% (v/v), Tween-20 in TBST.

Secondary antibody dilution buffer: 5%(w/v)non-fat dried milk,0.1% (v/v),Tween-20 in TBST.

12% SDS gel. Nitrocellulose membrane.

Blocking: Room temperature for 2 hours or overnight at 4°C. Then wash 3x for 5 minutes with 0.05% blocking buffer.

Primary antibody incubation: diluted in TBST at 1/500. Incubate overnight with 4 degrees shaking. Then, in 0.05% TBST, wash membrane 3-4 times for 10min.

Secondary antibody incubation: diluted in TBST at 1/2000. Incubate

37°C for 1 hour. Then, in 0.05% TBST, wash membrane 3-4 times for 10min.

ECL development.

Please note: All products are "FOR RESEARCH USE ONLY. NOT FOR USE IN DIAGNOSTIC PROCEDURES"

Our Abpromise to you: Quality guaranteed and expert technical support

- Replacement or refund for products not performing as stated on the datasheet
- Valid for 12 months from date of delivery
- Response to your inquiry within 24 hours
- We provide support in Chinese, English, French, German, Japanese and Spanish
- Extensive multi-media technical resources to help you
- We investigate all quality concerns to ensure our products perform to the highest standards

If the product does not perform as described on this datasheet, we will offer a refund or replacement. For full details of the Abpromise, please visit <https://www.abcam.com/abpromise> or contact our technical team.

Terms and conditions

- Guarantee only valid for products bought direct from Abcam or one of our authorized distributors