

### Anti-Fibulin 5 antibody ab202977

[7 References](#) [4 Images](#)

#### Overview

<b>Product name</b>	Anti-Fibulin 5 antibody
<b>Description</b>	Rabbit polyclonal to Fibulin 5
<b>Host species</b>	Rabbit
<b>Tested applications</b>	<b>Suitable for:</b> IHC-P, WB
<b>Species reactivity</b>	<b>Reacts with:</b> Mouse, Rat, Human
<b>Immunogen</b>	Synthetic peptide within Human Fibulin 5 aa 126-206 conjugated to Keyhole Limpet Haemocyanin (KLH). The exact sequence is proprietary. Database link: <a href="#">Q9UBX5</a>
<b>Positive control</b>	Human placenta tissue; Human colon carcinoma lysate.
<b>General notes</b>	<p>The Life Science industry has been in the grips of a reproducibility crisis for a number of years. Abcam is leading the way in addressing this with our range of recombinant monoclonal antibodies and knockout edited cell lines for gold-standard validation. Please check that this product meets your needs before purchasing.</p> <p>If you have any questions, special requirements or concerns, please send us an inquiry and/or contact our Support team ahead of purchase. Recommended alternatives for this product can be found below, along with publications, customer reviews and Q&amp;As</p>

#### Properties

<b>Form</b>	Liquid
<b>Storage instructions</b>	Shipped at 4°C. Store at +4°C short term (1-2 weeks). Upon delivery aliquot. Store at -20°C long term. Avoid freeze / thaw cycle.
<b>Storage buffer</b>	<p>pH: 7.40</p> <p>Preservative: 0.02% Proclin 300</p> <p>Constituents: 50% Glycerol (glycerin, glycerine), 1% BSA, 48.98% TBS, 1X</p> <p>Aqueous buffered solution.</p>
<b>Purity</b>	Protein A purified
<b>Clonality</b>	Polyclonal
<b>Isotype</b>	IgG

## Applications

### The Abpromise guarantee

Our **Abpromise guarantee** covers the use of ab202977 in the following tested applications.

The application notes include recommended starting dilutions; optimal dilutions/concentrations should be determined by the end user.

Application	Abreviews	Notes
IHC-P		1/100 - 1/500. (or 1/50 - 1/200 if using a fluorescent secondary antibody).
WB		1/100 - 1/1000. Predicted molecular weight: 50 kDa.

## Target

### Function

Promotes adhesion of endothelial cells through interaction of integrins and the RGD motif. Could be a vascular ligand for integrin receptors and may play a role in vascular development and remodeling.

### Tissue specificity

Expressed predominantly in heart, ovary, and colon but also in kidney, pancreas, testis, lung and placenta. Not detectable in brain, liver, thymus, prostate, or peripheral blood leukocytes.

### Involvement in disease

Defects in FBLN5 are a cause of autosomal dominant cutis laxa (ADCL) [MIM:123700]. Hereditary cutis laxa refers to a heterogeneous group of connective tissue disorders characterized by cutaneous abnormalities and variable systemic manifestations. The most constant clinical feature is loose skin, sagging over the face and trunk. Hereditary cutis laxa is inherited in both autosomal dominant and autosomal recessive modes. Autosomal dominant cutis laxa is a relatively benign inherited and acquired connective tissue disorder.

Defects in FBLN5 are a cause of cutis laxa autosomal recessive type 1 (ARCL1) [MIM:219100]. Hereditary cutis laxa refers to a heterogeneous group of connective tissue disorders characterized by cutaneous abnormalities and variable systemic manifestations. The most constant clinical feature is loose skin, sagging over the face and trunk. Hereditary cutis laxa is inherited in both autosomal dominant and autosomal recessive modes. ARCL1 shows the most severe phenotype and has the poorest prognosis. In addition to the skin, internal organs enriched in elastic fibers, such as the lung and arteries, are affected.

Defects in FBLN5 are the cause of age-related macular degeneration type 3 (ARMD3) [MIM:608895]. ARMD is a multifactorial disease and the most common cause of irreversible vision loss in the developed world. In most patients, the disease is manifest as ophthalmoscopically visible yellowish accumulations of protein and lipid (known as drusen) that lie beneath the retinal pigment epithelium and within an elastin-containing structure known as Bruch membrane.

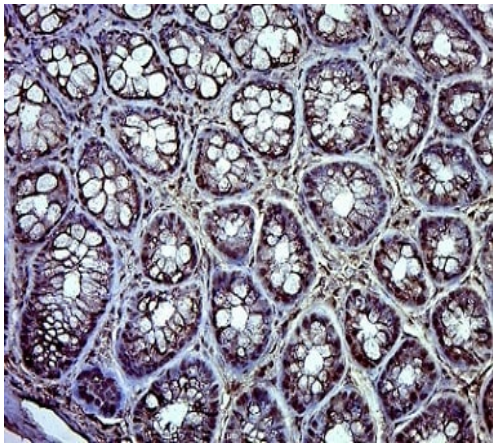
### Sequence similarities

Belongs to the fibulin family.  
Contains 6 EGF-like domains.

### Cellular localization

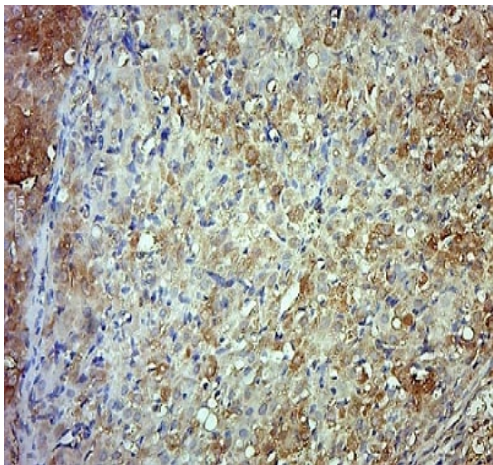
Secreted.

## Images



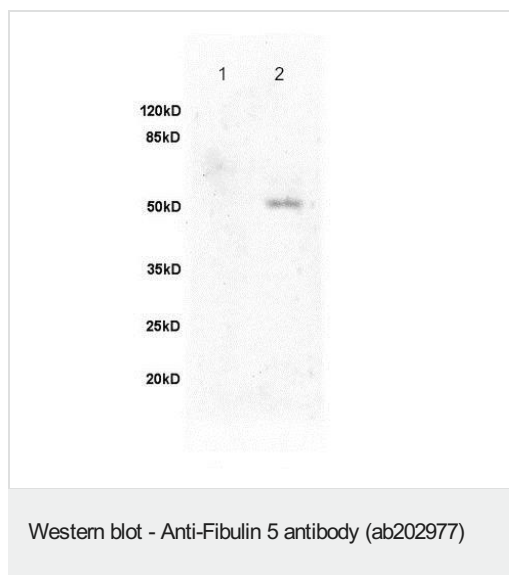
Immunohistochemistry (Formalin/PFA-fixed paraffin-embedded sections) - Anti-Fibulin 5 antibody (ab202977)

Immunohistochemistry (Formalin/PFA-fixed paraffin-embedded sections) analysis of mouse colon tissue sections labeling Fibulin 5 with ab202977 at 1/400 dilution. Antigen retrieval was performed by boiling in sodium citrate buffer (pH 6.0) for 15 minutes, followed by endogenous peroxidase blocking with 3% hydrogen peroxide for 20 minutes. The tissue was incubated with Anti-Fibulin 5 antibody (ab202977) at 1/400 dilution overnight at 4°C, followed by a conjugated secondary for 20 minutes and DAB staining.



Immunohistochemistry (Formalin/PFA-fixed paraffin-embedded sections) - Anti-Fibulin 5 antibody (ab202977)

Immunohistochemistry (Formalin/PFA-fixed paraffin-embedded sections) analysis of rat ovary tissue sections labeling Fibulin 5 with ab202977 at 1/500 dilution. Antigen retrieval was performed by boiling in sodium citrate buffer (pH 6.0) for 15 minutes, followed by endogenous peroxidase blocking with 3% hydrogen peroxide for 20 minutes. The tissue was incubated with Anti-Fibulin 5 antibody (ab202977) at 1/500 dilution overnight at 4°C, followed by a conjugated secondary for 20 minutes and DAB staining.



**All lanes :** Anti-Fibulin 5 antibody (ab202977) at 1/200 dilution

**Lane 1 :** Rat brain lysate

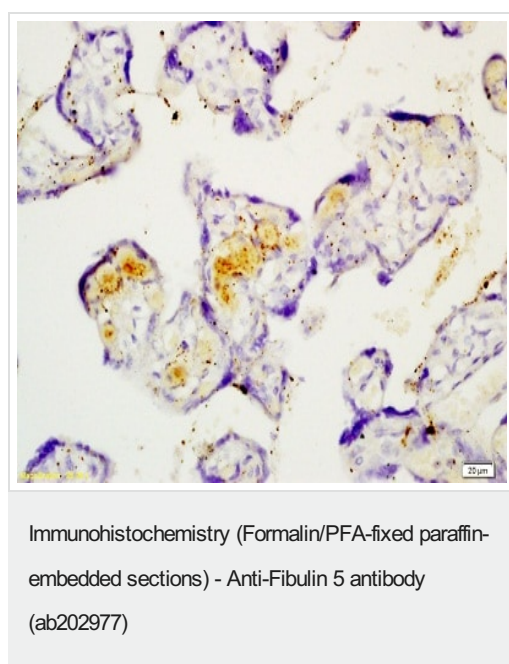
**Lane 2 :** Human colon carcinoma lysate

#### Secondary

**All lanes :** Goat Anti-Rabbit IgG Antibody (H+L), HRP Conjugated at 1/3000 dilution

**Predicted band size:** 50 kDa

**Observed band size:** 50 kDa



Immunohistochemical analysis of formalin-fixed, paraffin-embedded Human placenta tissue labeling Fibulin 5 with ab202977 at 1/200 dilution, followed by conjugation to the secondary antibody and DAB staining.

**Please note:** All products are "FOR RESEARCH USE ONLY. NOT FOR USE IN DIAGNOSTIC PROCEDURES"

#### Our Abpromise to you: Quality guaranteed and expert technical support

- Replacement or refund for products not performing as stated on the datasheet
- Valid for 12 months from date of delivery
- Response to your inquiry within 24 hours
- We provide support in Chinese, English, French, German, Japanese and Spanish
- Extensive multi-media technical resources to help you
- We investigate all quality concerns to ensure our products perform to the highest standards

If the product does not perform as described on this datasheet, we will offer a refund or replacement. For full details of the Abpromise, please visit <https://www.abcam.com/abpromise> or contact our technical team.

## Terms and conditions

---

- Guarantee only valid for products bought direct from Abcam or one of our authorized distributors