

### FITC Anti-C4c+C4b antibody ab4216

[1 References](#) [1 Image](#)

#### Overview

<b>Product name</b>	FITC Anti-C4c+C4b antibody
<b>Description</b>	FITC Rabbit polyclonal to C4c+C4b
<b>Host species</b>	Rabbit
<b>Conjugation</b>	FITC. Ex: 493nm, Em: 528nm
<b>Specificity</b>	This antibody reacts with human C4, C4b and C4c but does not react with the C4d epitope.
<b>Tested applications</b>	<b>Suitable for:</b> IHC-P
<b>Species reactivity</b>	<b>Reacts with:</b> Human
<b>Immunogen</b>	The details of the immunogen for this antibody are not available.
<b>General notes</b>	<p>The Life Science industry has been in the grips of a reproducibility crisis for a number of years. Abcam is leading the way in addressing this with our range of recombinant monoclonal antibodies and knockout edited cell lines for gold-standard validation. Please check that this product meets your needs before purchasing.</p> <p>If you have any questions, special requirements or concerns, please send us an inquiry and/or contact our Support team ahead of purchase. Recommended alternatives for this product can be found below, along with publications, customer reviews and Q&amp;As</p>

#### Properties

<b>Form</b>	Liquid
<b>Storage instructions</b>	Shipped at 4°C. Store at +4°C.
<b>Storage buffer</b>	pH: 7.3 Preservative: 0.05% Sodium azide Constituents: PBS, 1% BSA
<b>Purity</b>	IgG fraction
<b>Purification notes</b>	Traces of contaminating antibodies have been removed by solid phase absorption with human plasma proteins.
<b>Clonality</b>	Polyclonal
<b>Isotype</b>	IgG

#### Applications

## Applications

### The Abpromise guarantee

Our **Abpromise guarantee** covers the use of ab4216 in the following tested applications.

The application notes include recommended starting dilutions; optimal dilutions/concentrations should be determined by the end user.

Application	Abreviews	Notes
IHC-P		Use at an assay dependent concentration.

## Target

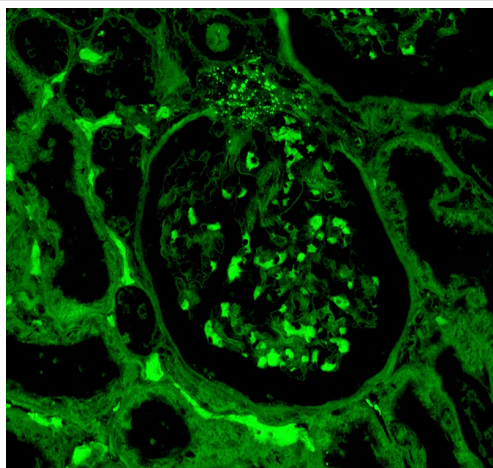
### Relevance

C4 plays a central role in the activation of the classical pathway of the complement system. Human complement component C4 is polymorphic at two loci, C4A and C4B. The C4A alleles carry the Rodgers (Rg) while the C4B alleles carry the Chido (Ch) blood group antigens. C4 (either allele A or B) protein is expressed as a single chain precursor which is proteolytically cleaved into a trimer of alpha, beta, and gamma chains prior to secretion. The trimer provides a surface for interaction between the antigen-antibody complex and other complement components. During activation, the alpha chain is cleaved by C1 into C4a and C4b, and C4b stays linked to the beta and gamma chains. Further degradation of C4b by C1 into the inactive fragments C4c and C4d blocks the generation of C3 convertase.

### Cellular localization

Secreted

## Images



Immunohistochemistry (Formalin fixed paraffin-embedded sections) analysis of human kidney stained labelling C4C Complement with ab4216.

Immunohistochemistry (Formalin/PFA-fixed paraffin-embedded sections) - FITC Anti-C4c+C4b antibody (ab4216)

**Please note:** All products are "FOR RESEARCH USE ONLY. NOT FOR USE IN DIAGNOSTIC PROCEDURES"

## Our Abpromise to you: Quality guaranteed and expert technical support

- Replacement or refund for products not performing as stated on the datasheet

- Valid for 12 months from date of delivery
- Response to your inquiry within 24 hours
- We provide support in Chinese, English, French, German, Japanese and Spanish
- Extensive multi-media technical resources to help you
- We investigate all quality concerns to ensure our products perform to the highest standards

If the product does not perform as described on this datasheet, we will offer a refund or replacement. For full details of the Abpromise, please visit <https://www.abcam.com/abpromise> or contact our technical team.

#### **Terms and conditions**

---

- Guarantee only valid for products bought direct from Abcam or one of our authorized distributors