

Product datasheet

FITC Anti-CD105 antibody [SN6] ab11415

★★★★★ [1 Abreviews](#) [5 References](#) [1 Image](#)

Overview

Product name	FITC Anti-CD105 antibody [SN6]
Description	FITC Mouse monoclonal [SN6] to CD105
Host species	Mouse
Conjugation	FITC. Ex: 493nm, Em: 528nm
Specificity	ab11415 recognises the human CD105 cell surface antigen. CD105 is expressed by endothelial cells, activated monocytes and some leukaemia cells.
Tested applications	Suitable for: Flow Cyt Unsuitable for: IHC-P
Species reactivity	Reacts with: Human
Immunogen	Partially purified cell membrane antigens from fresh leukaemia cells.
General notes	<p>This product should be stored undiluted. Storage in frost free freezers is not recommended. Should this product contain a precipitate we recommend microcentrifugation before use.</p> <p>The Life Science industry has been in the grips of a reproducibility crisis for a number of years. Abcam is leading the way in addressing this with our range of recombinant monoclonal antibodies and knockout edited cell lines for gold-standard validation. Please check that this product meets your needs before purchasing.</p> <p>If you have any questions, special requirements or concerns, please send us an inquiry and/or contact our Support team ahead of purchase. Recommended alternatives for this product can be found below, along with publications, customer reviews and Q&As</p>

Properties

Form	Liquid
Storage instructions	Shipped at 4°C. Store at +4°C.
Storage buffer	pH: 7.40 Preservative: 0.09% Sodium azide Constituent: PBS
Purity	Protein G purified
Purification notes	Purified IgG prepared by affinity chromatography from tissue culture supernatant.
Clonality	Monoclonal

Clone number	SN6
Myeloma	P3-NS1/1-Ag4-1
Isotype	IgG1

Applications

The Abpromise guarantee Our **Abpromise guarantee** covers the use of ab11415 in the following tested applications. The application notes include recommended starting dilutions; optimal dilutions/concentrations should be determined by the end user.

Application	Abreviews	Notes
Flow Cyt	★★★★★ (1)	Use at an assay dependent concentration. Use neat. Use 10ul of the suggested working dilution to label 10E6 cells in 100ul.

Application notes Is unsuitable for IHC-P.

Target

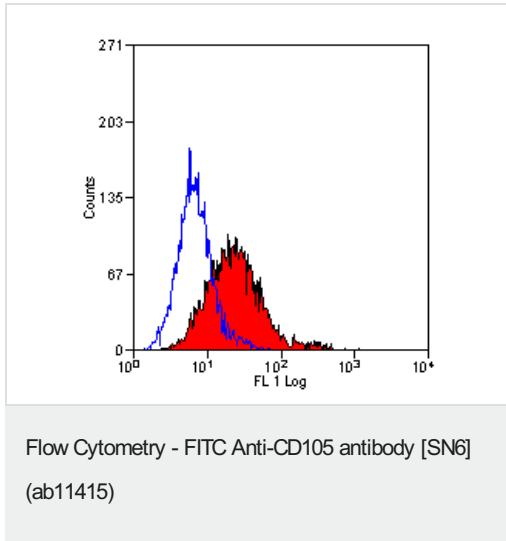
Function Major glycoprotein of vascular endothelium. May play a critical role in the binding of endothelial cells to integrins and/or other RGD receptors.

Tissue specificity Endoglin is restricted to endothelial cells in all tissues except bone marrow.

Involvement in disease Defects in ENG are the cause of hereditary hemorrhagic telangiectasia type 1 (HHT1) [MIM:187300, 108010]; also known as Osler-Rendu-Weber syndrome 1 (ORW1). HHT1 is an autosomal dominant multisystemic vascular dysplasia, characterized by recurrent epistaxis, muco-cutaneous telangiectases, gastro-intestinal hemorrhage, and pulmonary (PAVM), cerebral (CAVM) and hepatic arteriovenous malformations; all secondary manifestations of the underlying vascular dysplasia. Although the first symptom of HHT1 in children is generally nose bleed, there is an important clinical heterogeneity.

Cellular localization Membrane.

Images



ab11415 staining CD105 in human KG1 cells by Flow Cytometry analysis.

Please note: All products are "FOR RESEARCH USE ONLY. NOT FOR USE IN DIAGNOSTIC PROCEDURES"

Our Abpromise to you: Quality guaranteed and expert technical support

- Replacement or refund for products not performing as stated on the datasheet
- Valid for 12 months from date of delivery
- Response to your inquiry within 24 hours
- We provide support in Chinese, English, French, German, Japanese and Spanish
- Extensive multi-media technical resources to help you
- We investigate all quality concerns to ensure our products perform to the highest standards

If the product does not perform as described on this datasheet, we will offer a refund or replacement. For full details of the Abpromise, please visit <https://www.abcam.com/abpromise> or contact our technical team.

Terms and conditions

- Guarantee only valid for products bought direct from Abcam or one of our authorized distributors