

# FITC Anti-CD3 epsilon antibody [C363.29B] ab24948

[3 References](#) [2 Images](#)

### Overview

<b>Product name</b>	FITC Anti-CD3 epsilon antibody [C363.29B]
<b>Description</b>	FITC Rat monoclonal [C363.29B] to CD3 epsilon
<b>Host species</b>	Rat
<b>Conjugation</b>	FITC. Ex: 493nm, Em: 528nm
<b>Tested applications</b>	<b>Suitable for:</b> Flow Cyt
<b>Species reactivity</b>	<b>Reacts with:</b> Mouse
<b>Immunogen</b>	Tissue, cells or virus corresponding to Mouse CD3 epsilon. IL-4 producing Th2 cell lines including D10.
<b>Epitope</b>	This antibody reacts with an epitope located in the epsilon chain of the CD3/TCR complex.
<b>Positive control</b>	Flow Cyt: Cells from BALB/c mouse mesenteric lymph nodes. Mouse splenocytes.
<b>General notes</b>	<p>The Life Science industry has been in the grips of a reproducibility crisis for a number of years. Abcam is leading the way in addressing this with our range of recombinant monoclonal antibodies and knockout edited cell lines for gold-standard validation. Please check that this product meets your needs before purchasing.</p> <p>If you have any questions, special requirements or concerns, please send us an inquiry and/or contact our Support team ahead of purchase. Recommended alternatives for this product can be found below, along with publications, customer reviews and Q&amp;As</p>

### Properties

<b>Form</b>	Liquid
<b>Storage instructions</b>	Shipped at 4°C. Store at +4°C. Store In the Dark.
<b>Storage buffer</b>	pH: 7.4 Preservative: 0.1% Sodium azide Constituent: PBS
<b>Purity</b>	Affinity purified
<b>Clonality</b>	Monoclonal
<b>Clone number</b>	C363.29B
<b>Isotype</b>	IgG2c
<b>Light chain type</b>	kappa

## Applications

### The Abpromise guarantee

Our **Abpromise guarantee** covers the use of ab24948 in the following tested applications.

The application notes include recommended starting dilutions; optimal dilutions/concentrations should be determined by the end user.

Application	Abreviews	Notes
Flow Cyt		Use 3µg for 10 <sup>6</sup> cells. <i>In vitro</i> depletion of CD3+ cells and activation of T cells (accessory cells must be provided). <b>ab114134</b> - Rat monoclonal IgG2c, is suitable for use as an isotype control with this antibody.

## Target

### Function

The CD3 complex mediates signal transduction.

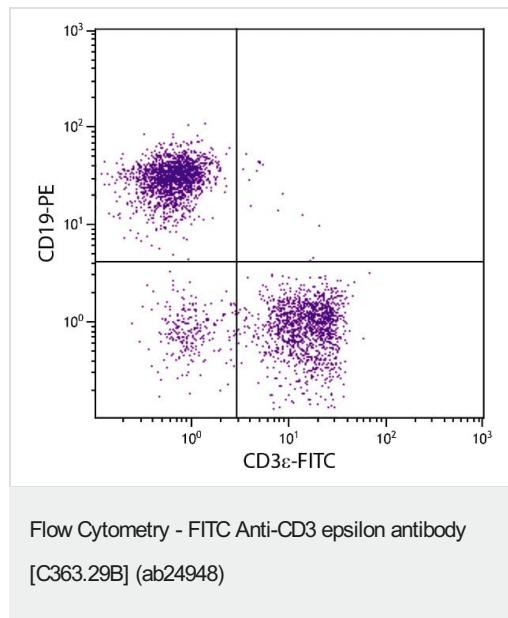
### Sequence similarities

Contains 1 Ig-like (immunoglobulin-like) domain.  
Contains 1 ITAM domain.

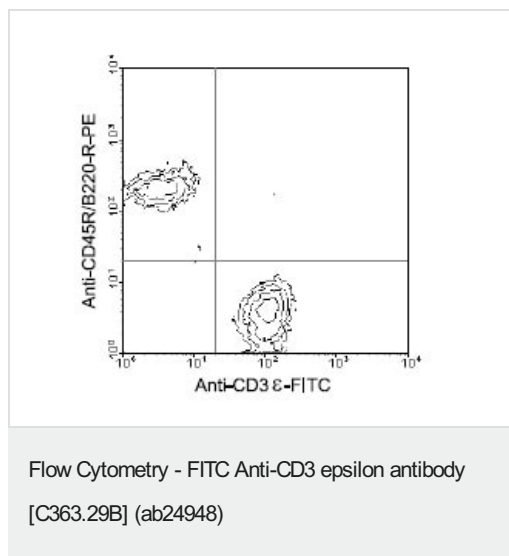
### Cellular localization

Membrane.

## Images



Flow Cytometry analysis of C57BL/6 mouse splenocytes stained with Anti-CD3 epsilon antibody [C363.29B] (FITC) ab24948 (1 µg/10<sup>6</sup> cells) and Rat Anti-Mouse CD19-PE.



Ab24948 (3 $\mu$ g for 10<sup>6</sup> cells) and anti mouse CD45R/B220 RPE conjugate antibody doubly staining cells from BALB/c mesenteric lymph nodes, gated on small lymphocytes and analyzed using a flow cytometer.

**Please note:** All products are "FOR RESEARCH USE ONLY. NOT FOR USE IN DIAGNOSTIC PROCEDURES"

### Our Abpromise to you: Quality guaranteed and expert technical support

- Replacement or refund for products not performing as stated on the datasheet
- Valid for 12 months from date of delivery
- Response to your inquiry within 24 hours
- We provide support in Chinese, English, French, German, Japanese and Spanish
- Extensive multi-media technical resources to help you
- We investigate all quality concerns to ensure our products perform to the highest standards

If the product does not perform as described on this datasheet, we will offer a refund or replacement. For full details of the Abpromise, please visit <https://www.abcam.com/abpromise> or contact our technical team.

### Terms and conditions

- Guarantee only valid for products bought direct from Abcam or one of our authorized distributors