

## Product datasheet

# FITC Anti-CD63 antibody [AD1] ab108949

[1 References](#) [1 Image](#)

### Overview

---

<b>Product name</b>	FITC Anti-CD63 antibody [AD1]
<b>Description</b>	FITC Mouse monoclonal [AD1] to CD63
<b>Host species</b>	Mouse
<b>Conjugation</b>	FITC. Ex: 493nm, Em: 528nm
<b>Specificity</b>	Rat CD63 is expressed on mast cells, and studies using clone AD1, have shown that it is located near to FcER1, and that clone AD1 partially inhibits IgE-mediated histamine release
<b>Tested applications</b>	<b>Suitable for:</b> Flow Cyt
<b>Species reactivity</b>	<b>Reacts with:</b> Rat
<b>Immunogen</b>	Tissue, cells or virus corresponding to Rat CD63. RBL-2H3 rat basophilic leukaemia cell line.
<b>General notes</b>	<p>The Life Science industry has been in the grips of a reproducibility crisis for a number of years. Abcam is leading the way in addressing this with our range of recombinant monoclonal antibodies and knockout edited cell lines for gold-standard validation. Please check that this product meets your needs before purchasing.</p> <p>If you have any questions, special requirements or concerns, please send us an inquiry and/or contact our Support team ahead of purchase. Recommended alternatives for this product can be found below, along with publications, customer reviews and Q&amp;As</p>

### Properties

---

<b>Form</b>	Liquid
<b>Storage instructions</b>	Shipped at 4°C. Store at +4°C.
<b>Storage buffer</b>	Preservative: 0.09% Sodium azide Constituents: PBS, 1% BSA
<b>Purity</b>	Protein G purified
<b>Clonality</b>	Monoclonal
<b>Clone number</b>	AD1
<b>Myeloma</b>	x63-Ag8.653
<b>Isotype</b>	IgG1

## Applications

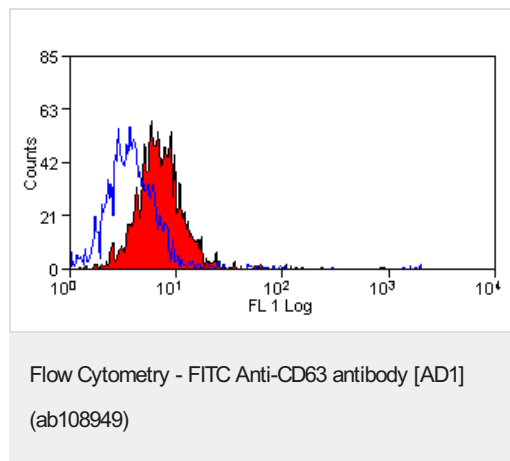
**The Abpromise guarantee** Our **Abpromise guarantee** covers the use of ab108949 in the following tested applications. The application notes include recommended starting dilutions; optimal dilutions/concentrations should be determined by the end user.

Application	Abreviews	Notes
Flow Cyt		Use at an assay dependent concentration. <b>ab91356</b> - Mouse monoclonal IgG1, is suitable for use as an isotype control with this antibody.

## Target

<b>Function</b>	This antigen is associated with early stages of melanoma tumor progression. May play a role in growth regulation.
<b>Tissue specificity</b>	Dysplastic nevi, radial growth phase primary melanomas, hematopoietic cells, tissue macrophages.
<b>Sequence similarities</b>	Belongs to the tetraspanin (TM4SF) family.
<b>Cellular localization</b>	Cell membrane. Lysosome membrane. Late endosome membrane. Also found in Weibel-Palade bodies of endothelial cells. Located in platelet dense granules.

## Images



ab108949 detecting CD63 in Rat peripheral blood platelets by Flow Cytometric analysis.

**Please note:** All products are "FOR RESEARCH USE ONLY. NOT FOR USE IN DIAGNOSTIC PROCEDURES"

## Our Abpromise to you: Quality guaranteed and expert technical support

- Replacement or refund for products not performing as stated on the datasheet
- Valid for 12 months from date of delivery
- Response to your inquiry within 24 hours
- We provide support in Chinese, English, French, German, Japanese and Spanish
- Extensive multi-media technical resources to help you

- We investigate all quality concerns to ensure our products perform to the highest standards

If the product does not perform as described on this datasheet, we will offer a refund or replacement. For full details of the Abpromise, please visit <https://www.abcam.com/abpromise> or contact our technical team.

#### **Terms and conditions**

---

- Guarantee only valid for products bought direct from Abcam or one of our authorized distributors