

FITC Anti-CD68 antibody [Y1/82A] ab134351

[4 References](#) [1 Image](#)

Overview

Product name	FITC Anti-CD68 antibody [Y1/82A]
Description	FITC Mouse monoclonal [Y1/82A] to CD68
Host species	Mouse
Conjugation	FITC. Ex: 493nm, Em: 528nm
Tested applications	Suitable for: Flow Cyt (Intra)
Species reactivity	Reacts with: Human
Immunogen	Normal lymphocytes stimulated with phytohaemagglutinin/Freund's adjuvant
Positive control	Flow Cyt (Intra): Human peripheral blood monocytes
General notes	<p>The reagent is free of unconjugated FITC.</p> <p>The Life Science industry has been in the grips of a reproducibility crisis for a number of years. Abcam is leading the way in addressing this with our range of recombinant monoclonal antibodies and knockout edited cell lines for gold-standard validation. Please check that this product meets your needs before purchasing.</p> <p>If you have any questions, special requirements or concerns, please send us an inquiry and/or contact our Support team ahead of purchase. Recommended alternatives for this product can be found below, along with publications, customer reviews and Q&As</p>

Properties

Form	Liquid
Storage instructions	Shipped at 4°C. Store at +4°C.
Storage buffer	<p>pH: 7.20</p> <p>Preservative: 0.09% Sodium azide</p> <p>Constituents: 98% PBS, 0.2% BSA</p>
Purity	IgG fraction
Purification notes	Purified by affinity chromatography. Purity of this monoclonal antibodies is 95%.
Clonality	Monoclonal
Clone number	Y1/82A
Isotype	IgG2b

Applications

The Abpromise guarantee

Our **Abpromise guarantee** covers the use of ab134351 in the following tested applications.

The application notes include recommended starting dilutions; optimal dilutions/concentrations should be determined by the end user.

Application	Abreviews	Notes
Flow Cyt (Intra)		<p>Use 5-20µl for 10⁶ cells. in 100 µl staining volume. Or Use 5 - 20 µl for 100 µl of whole blood.</p> <p>ab18427 - Mouse monoclonal IgG2b, is suitable for use as an isotype control with this antibody.</p>

Target

Function

Could play a role in phagocytic activities of tissue macrophages, both in intracellular lysosomal metabolism and extracellular cell-cell and cell-pathogen interactions. Binds to tissue- and organ-specific lectins or selectins, allowing homing of macrophage subsets to particular sites. Rapid recirculation of CD68 from endosomes and lysosomes to the plasma membrane may allow macrophages to crawl over selectin-bearing substrates or other cells.

Tissue specificity

Highly expressed by blood monocytes and tissue macrophages. Also expressed in lymphocytes, fibroblasts and endothelial cells. Expressed in many tumor cell lines which could allow them to attach to selectins on vascular endothelium, facilitating their dissemination to secondary sites.

Sequence similarities

Belongs to the LAMP family.

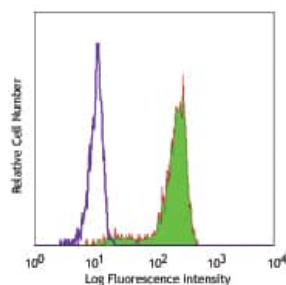
Post-translational modifications

N- and O-glycosylated.

Cellular localization

Cell membrane and Endosome membrane. Lysosome membrane.

Images



Intracellular immunofluorescent staining with flow cytometric analysis labelling CD68 in Human peripheral blood monocytes intracellularly stained by ab134351.

Flow Cytometry (Intracellular) - FITC Anti-CD68 antibody [Y1/82A] (ab134351)

Please note: All products are "FOR RESEARCH USE ONLY. NOT FOR USE IN DIAGNOSTIC PROCEDURES"

Our Abpromise to you: Quality guaranteed and expert technical support

- Replacement or refund for products not performing as stated on the datasheet
- Valid for 12 months from date of delivery
- Response to your inquiry within 24 hours

- We provide support in Chinese, English, French, German, Japanese and Spanish
- Extensive multi-media technical resources to help you
- We investigate all quality concerns to ensure our products perform to the highest standards

If the product does not perform as described on this datasheet, we will offer a refund or replacement. For full details of the Abpromise, please visit <https://www.abcam.com/abpromise> or contact our technical team.

Terms and conditions

- Guarantee only valid for products bought direct from Abcam or one of our authorized distributors