

Product datasheet

FITC Anti-IL-6R antibody [B-R6] ab27321

[3 References](#) [1 Image](#)

Overview

Product name	FITC Anti-IL-6R antibody [B-R6]
Description	FITC Mouse monoclonal [B-R6] to IL-6R
Host species	Mouse
Conjugation	FITC. Ex: 493nm, Em: 528nm
Specificity	Recognises the Interleukin-6 Ra subunit, IL-6 Ra, IL-6 R, a 80 kDa protein.
Tested applications	Suitable for: Flow Cyt
Species reactivity	Reacts with: Human
Immunogen	Recombinant full length protein corresponding to Human IL-6R. gp80 transfected CHO cell line
Positive control	Cells from U266 cell line.
General notes	<p>This product was changed from ascites to tissue culture supernatant on 19th June 2019. Please note that the dilutions may need to be adjusted accordingly. If you have any questions, please do not hesitate to contact our scientific support team.</p> <p>The Life Science industry has been in the grips of a reproducibility crisis for a number of years. Abcam is leading the way in addressing this with our range of recombinant monoclonal antibodies and knockout edited cell lines for gold-standard validation. Please check that this product meets your needs before purchasing.</p> <p>If you have any questions, special requirements or concerns, please send us an inquiry and/or contact our Support team ahead of purchase. Recommended alternatives for this product can be found below, along with publications, customer reviews and Q&As</p>

Properties

Form	Liquid
Storage instructions	Shipped at 4°C. Store at +4°C.
Storage buffer	<p>pH: 7.30</p> <p>Preservative: 0.09% Sodium azide</p> <p>Constituents: 94.91% PBS, 5% BSA</p>
Purity	Tissue culture supernatant
Clonality	Monoclonal
Clone number	B-R6

Myeloma	x63-Ag8.653
Isotype	IgG1
Light chain type	kappa

Applications

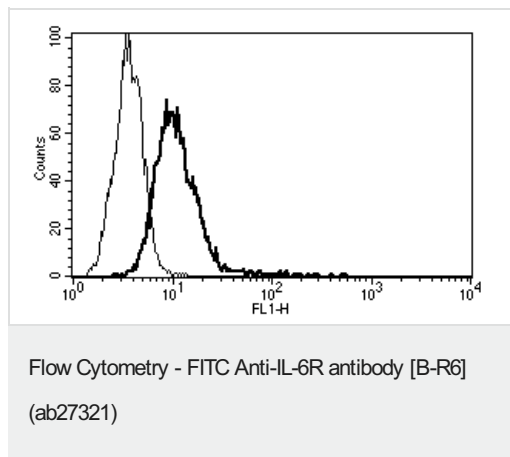
The Abpromise guarantee Our **Abpromise guarantee** covers the use of ab27321 in the following tested applications. The application notes include recommended starting dilutions; optimal dilutions/concentrations should be determined by the end user.

Application	Abreviews	Notes
Flow Cyt		Use at an assay dependent concentration. ab91356 - Mouse monoclonal IgG1, is suitable for use as an isotype control with this antibody.

Target

Function	Part of the receptor for interleukin 6. Binds to IL6 with low affinity, but does not transduce a signal. Signal activation necessitate an association with IL6ST. Activation may lead to the regulation of the immune response, acute-phase reactions and hematopoiesis. Low concentration of a soluble form of IL6 receptor acts as an agonist of IL6 activity.
Tissue specificity	Isoform 2 is expressed in peripheral blood mononuclear cells and weakly found in urine and serum.
Sequence similarities	Belongs to the type I cytokine receptor family. Type 3 subfamily. Contains 1 fibronectin type-III domain. Contains 1 Ig-like C2-type (immunoglobulin-like) domain.
Domain	The two fibronectin type-III-like domains, contained in the N-terminal part, form together a cytokine-binding domain. The WSXWS motif appears to be necessary for proper protein folding and thereby efficient intracellular transport and cell-surface receptor binding.
Post-translational modifications	A short soluble form may also be released from the membrane by proteolysis.
Cellular localization	Secreted and Basolateral cell membrane.

Images



ab27321 at 10 μ l/10⁶ cells staining IL6R in U266 cell line by Flow Cytometry.

This image was generated using the ascites version of the product.

Please note: All products are "FOR RESEARCH USE ONLY. NOT FOR USE IN DIAGNOSTIC PROCEDURES"

Our Abpromise to you: Quality guaranteed and expert technical support

- Replacement or refund for products not performing as stated on the datasheet
- Valid for 12 months from date of delivery
- Response to your inquiry within 24 hours
- We provide support in Chinese, English, French, German, Japanese and Spanish
- Extensive multi-media technical resources to help you
- We investigate all quality concerns to ensure our products perform to the highest standards

If the product does not perform as described on this datasheet, we will offer a refund or replacement. For full details of the Abpromise, please visit <https://www.abcam.com/abpromise> or contact our technical team.

Terms and conditions

- Guarantee only valid for products bought direct from Abcam or one of our authorized distributors