


Product datasheet

FITC Anti-NCAM1 antibody [MEM-188], prediluted ab69763

[1 Image](#)

Overview

Product name	FITC Anti-NCAM1 antibody [MEM-188], prediluted
Description	FITC Mouse monoclonal [MEM-188] to NCAM1, prediluted
Host species	Mouse
Conjugation	FITC. Ex: 493nm, Em: 528nm
Specificity	Reacts with a 180 kDa isoform of NCAM expressed in leukocytes. Reactivity with other isoforms has not been tested.
Tested applications	Suitable for: Flow Cyt
Species reactivity	Reacts with: Human Predicted to work with: Non human primates 
Immunogen	Tissue, cells or virus corresponding to Human NCAM1. KG-1 Human acute myelogenous leukemia cell line
Positive control	Human peripheral blood leukocytes.
General notes	<p>The Life Science industry has been in the grips of a reproducibility crisis for a number of years. Abcam is leading the way in addressing this with our range of recombinant monoclonal antibodies and knockout edited cell lines for gold-standard validation. Please check that this product meets your needs before purchasing.</p> <p>If you have any questions, special requirements or concerns, please send us an inquiry and/or contact our Support team ahead of purchase. Recommended alternatives for this product can be found below, along with publications, customer reviews and Q&As</p>

Properties

Form	Liquid
Storage instructions	Shipped at 4°C. Store at +4°C.
Storage buffer	pH: 7.4 Preservative: 0.097% Sodium azide Constituents: 0.2% BSA, PBS
Purity	Size exclusion
Purification notes	The purified antibody is conjugated with Fluorescein isothiocyanate (FITC) under optimum

conditions from >95% pure antibody (SDS PAGE). The reagent is free of unconjugated FITC and adjusted for direct use.

Clonality Monoclonal
Clone number MEM-188
Isotype IgG2a

Applications

The Abpromise guarantee Our **Abpromise guarantee** covers the use of ab69763 in the following tested applications. The application notes include recommended starting dilutions; optimal dilutions/concentrations should be determined by the end user.

Application	Abreviews	Notes
Flow Cyt		

Application notes Flow Cyt: Use 20µl for 10⁶ cells or 100µl whole blood.

Not yet tested in other applications.
Optimal dilutions/concentrations should be determined by the end user.

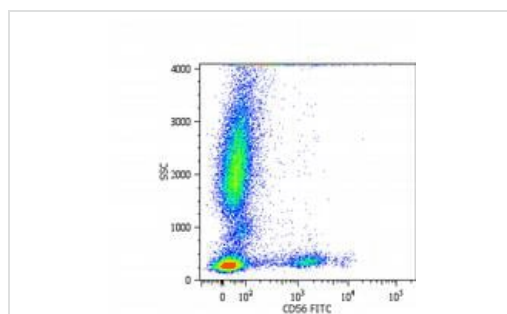
Target

Function This protein is a cell adhesion molecule involved in neuron-neuron adhesion, neurite fasciculation, outgrowth of neurites, etc.

Sequence similarities Contains 2 fibronectin type-III domains.
Contains 5 Ig-like C2-type (immunoglobulin-like) domains.

Cellular localization Secreted and Cell membrane.

Images



ab69763 at 20µl/10⁶ cells staining NCAM in human peripheral blood cells by flow cytometry.

Flow Cytometry - FITC Anti-NCAM1 antibody [MEM-188], prediluted (ab69763)

Please note: All products are "FOR RESEARCH USE ONLY. NOT FOR USE IN DIAGNOSTIC PROCEDURES"

Our Abpromise to you: Quality guaranteed and expert technical support

- Replacement or refund for products not performing as stated on the datasheet
- Valid for 12 months from date of delivery
- Response to your inquiry within 24 hours

- We provide support in Chinese, English, French, German, Japanese and Spanish
- Extensive multi-media technical resources to help you
- We investigate all quality concerns to ensure our products perform to the highest standards

If the product does not perform as described on this datasheet, we will offer a refund or replacement. For full details of the Abpromise, please visit <https://www.abcam.com/abpromise> or contact our technical team.

Terms and conditions

- Guarantee only valid for products bought direct from Abcam or one of our authorized distributors