

### FITC Anti-PD1 antibody [RMP1-30] ab93579

[1 Image](#)

#### Overview

<b>Product name</b>	FITC Anti-PD1 antibody [RMP1-30]
<b>Description</b>	FITC Rat monoclonal [RMP1-30] to PD1
<b>Host species</b>	Rat
<b>Conjugation</b>	FITC. Ex: 493nm, Em: 528nm
<b>Tested applications</b>	<b>Suitable for:</b> Flow Cyt
<b>Species reactivity</b>	<b>Reacts with:</b> Mouse
<b>Immunogen</b>	Tissue, cells or virus corresponding to Mouse PD1. Mouse PD1 transfected BHK cells 2
<b>Positive control</b>	3-day ConA activated BALB/c splenocytes
<b>General notes</b>	<p>ab93579 does not block the binding of either B7-H1-Ig or B7-DC-Ig to PD-1 transfectants.</p> <p>The Life Science industry has been in the grips of a reproducibility crisis for a number of years. Abcam is leading the way in addressing this with our range of recombinant monoclonal antibodies and knockout edited cell lines for gold-standard validation. Please check that this product meets your needs before purchasing.</p> <p>If you have any questions, special requirements or concerns, please send us an inquiry and/or contact our Support team ahead of purchase. Recommended alternatives for this product can be found below, along with publications, customer reviews and Q&amp;As</p>

#### Properties

<b>Form</b>	Liquid
<b>Storage instructions</b>	Shipped at 4°C. Store at +4°C.
<b>Storage buffer</b>	<p>pH: 7.20</p> <p>Preservative: 0.09% Sodium azide</p> <p>Constituents: 0.87% Sodium chloride, PBS</p>
<b>Purity</b>	Protein G purified
<b>Primary antibody notes</b>	ab93579 does not block the binding of either B7-H1-Ig or B7-DC-Ig to PD-1 transfectants.
<b>Clonality</b>	Monoclonal
<b>Clone number</b>	RMP1-30

<b>Isotype</b>	IgG2b
<b>Light chain type</b>	kappa

## Applications

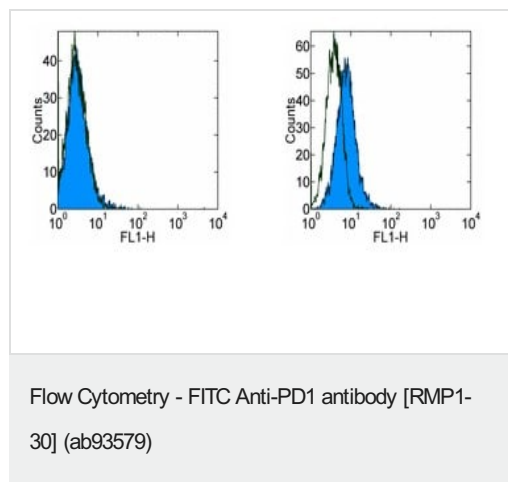
**The Abpromise guarantee** Our **Abpromise guarantee** covers the use of ab93579 in the following tested applications. The application notes include recommended starting dilutions; optimal dilutions/concentrations should be determined by the end user.

Application	Abreviews	Notes
<b>Flow Cyt</b>		Use 0.5µg for 10 <sup>5-8</sup> cells. Use 0.5µg for 10 <sup>5-8</sup> cells in 100µl.

## Target

<b>Function</b>	Possible cell death inducer, in association with other factors.
<b>Involvement in disease</b>	Genetic variation in PDCD1 is associated with susceptibility to systemic lupus erythematosus type 2 (SLEB2) [MIM:605218]. Systemic lupus erythematosus is a chronic, inflammatory and often febrile multisystemic disorder of connective tissue. It affects principally the skin, joints, kidneys and serosal membranes. It is thought to represent a failure of the regulatory mechanisms of the autoimmune system.
<b>Sequence similarities</b>	Contains 1 Ig-like V-type (immunoglobulin-like) domain.
<b>Developmental stage</b>	Induced at programmed cell death.
<b>Cellular localization</b>	Membrane.

## Images



Staining of 3-day unstimulated (left) and 3-day ConA activated (right) BALB/c splenocytes with 0.25 µg of FITC Rat IgG2b isotype control (open histogram), or 0.25 µg of ab93579 (colored histogram). Total viable cells were used for analysis.

**Please note:** All products are "FOR RESEARCH USE ONLY. NOT FOR USE IN DIAGNOSTIC PROCEDURES"

### **Our Abpromise to you: Quality guaranteed and expert technical support**

---

- Replacement or refund for products not performing as stated on the datasheet
- Valid for 12 months from date of delivery
- Response to your inquiry within 24 hours
  
- We provide support in Chinese, English, French, German, Japanese and Spanish
- Extensive multi-media technical resources to help you
- We investigate all quality concerns to ensure our products perform to the highest standards

If the product does not perform as described on this datasheet, we will offer a refund or replacement. For full details of the Abpromise, please visit <https://www.abcam.com/abpromise> or contact our technical team.

### **Terms and conditions**

---

- Guarantee only valid for products bought direct from Abcam or one of our authorized distributors