

# FITC Anti-PR3 antibody [WGM2] αb91182

[1 References](#) [1 Image](#)

### Overview

<b>Product name</b>	FITC Anti-PR3 antibody [WGM2]
<b>Description</b>	FITC Mouse monoclonal [WGM2] to PR3
<b>Host species</b>	Mouse
<b>Conjugation</b>	FITC. Ex: 493nm, Em: 528nm
<b>Tested applications</b>	<b>Suitable for:</b> Flow Cyt (Intra)
<b>Species reactivity</b>	<b>Reacts with:</b> Human
<b>Immunogen</b>	Full length protein. This information is proprietary to Abcam and/or its suppliers.
<b>Positive control</b>	Flow Cyt (Intra): Peripheral blood lymphocytes cells.
<b>General notes</b>	<p>Blocks PR3 activity and partially inhibits the binding of human PR3-ANCA to PR3.</p> <p>The Life Science industry has been in the grips of a reproducibility crisis for a number of years. Abcam is leading the way in addressing this with our range of recombinant monoclonal antibodies and knockout edited cell lines for gold-standard validation. Please check that this product meets your needs before purchasing.</p> <p>If you have any questions, special requirements or concerns, please send us an inquiry and/or contact our Support team ahead of purchase. Recommended alternatives for this product can be found below, along with publications, customer reviews and Q&amp;As</p>

### Properties

<b>Form</b>	Liquid
<b>Storage instructions</b>	Shipped at 4°C. Store at +4°C.
<b>Storage buffer</b>	Preservative: 0.02% Sodium azide Constituents: PBS, 0.1% BSA
<b>Purity</b>	Protein G purified
<b>Purification notes</b>	0.2 µm filtered antibody solution
<b>Primary antibody notes</b>	Blocks PR3 activity and partially inhibits the binding of human PR3-ANCA to PR3.
<b>Clonality</b>	Monoclonal
<b>Clone number</b>	WGM2

## Applications

### The Abpromise guarantee

Our **Abpromise guarantee** covers the use of ab91182 in the following tested applications.

The application notes include recommended starting dilutions; optimal dilutions/concentrations should be determined by the end user.

Application	Abreviews	Notes
Flow Cyt (Intra)		Use 5µl for 10 <sup>6</sup> cells. <b>ab91356</b> - Mouse monoclonal IgG1, is suitable for use as an isotype control with this antibody.

## Target

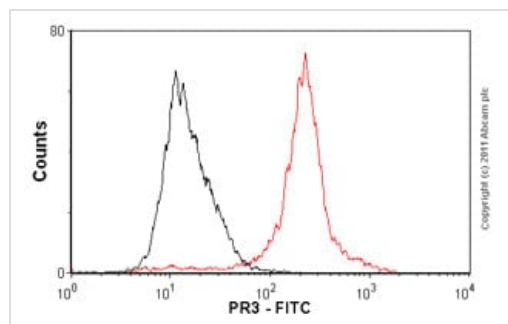
### Function

Polymorphonuclear leukocyte serine protease that degrades elastin, fibronectin, laminin, vitronectin, and collagen types I, III, and IV (in vitro) and causes emphysema when administered by tracheal insufflation to hamsters.

### Sequence similarities

Belongs to the peptidase S1 family. Elastase subfamily.  
Contains 1 peptidase S1 domain.

## Images



Flow Cytometry (Intracellular) - FITC Anti-PR3 antibody [WGM2] (ab91182)

Overlay histogram showing peripheral blood lymphocytes cells stained with ab91182 (red line). The cells were fixed with 4% paraformaldehyde (10 min) and then permeabilized with 0.1% PBS-Tween for 20 min. The cells were then incubated in 1x PBS / 10% normal goat serum / 0.3M glycine to block non-specific protein-protein interactions followed by the antibody (ab91182, 0.5µg/1x10<sup>6</sup> cells) for 30 min at 22°C. Isotype control antibody (black line) was mouse IgG1 (1µg/1x10<sup>6</sup> cells). Acquisition of >5,000 events was performed.

**Please note:** All products are "FOR RESEARCH USE ONLY. NOT FOR USE IN DIAGNOSTIC PROCEDURES"

## Our Abpromise to you: Quality guaranteed and expert technical support

- Replacement or refund for products not performing as stated on the datasheet
- Valid for 12 months from date of delivery
- Response to your inquiry within 24 hours
- We provide support in Chinese, English, French, German, Japanese and Spanish

- Extensive multi-media technical resources to help you
- We investigate all quality concerns to ensure our products perform to the highest standards

If the product does not perform as described on this datasheet, we will offer a refund or replacement. For full details of the Abpromise, please visit <https://www.abcam.com/abpromise> or contact our technical team.

#### **Terms and conditions**

---

- Guarantee only valid for products bought direct from Abcam or one of our authorized distributors