

## Product datasheet

# FITC Anti-S100A9 + Calprotectin (S100A8/A9 complex) antibody [MAC387] $\alpha$ b7429

★★★★★ [1 Abreviews](#) [7 References](#) [1 Image](#)

### Overview

<b>Product name</b>	FITC Anti-S100A9 + Calprotectin (S100A8/A9 complex) antibody [MAC387]
<b>Description</b>	FITC Mouse monoclonal [MAC387] to S100A9 + Calprotectin (S100A8/A9 complex)
<b>Host species</b>	Mouse
<b>Conjugation</b>	FITC. Ex: 493nm, Em: 528nm
<b>Specificity</b>	This antibody recognises the L1 or Calprotectin molecule, an intracytoplasmic antigen comprised of a 12kD alpha chain and a 14kD beta chain. The antigen is expressed by granulocytes, monocytes and tissue macrophages. Variable results have been reported for staining brain macrophages and microglia.
<b>Tested applications</b>	<b>Suitable for:</b> Flow Cyt (Intra)
<b>Species reactivity</b>	<b>Reacts with:</b> Rat, Rabbit, Horse, Guinea pig, Cow, Cat, Dog, Human, Pig, Monkey, Baboon, Cynomolgus monkey, Rhesus monkey
<b>Immunogen</b>	Tissue, cells or virus corresponding to Human S100A9 + Calprotectin (S100A8/A9 complex). Human monocytes
<b>Positive control</b>	Flow Cyt (Intra): Human peripheral blood granulocyte
<b>General notes</b>	<p>The Life Science industry has been in the grips of a reproducibility crisis for a number of years. Abcam is leading the way in addressing this with our range of recombinant monoclonal antibodies and knockout edited cell lines for gold-standard validation. Please check that this product meets your needs before purchasing.</p> <p>If you have any questions, special requirements or concerns, please send us an inquiry and/or contact our Support team ahead of purchase. Recommended alternatives for this product can be found below, along with publications, customer reviews and Q&amp;As</p>

### Properties

<b>Form</b>	Liquid
<b>Storage instructions</b>	Shipped at 4°C. Store at +4°C.
<b>Storage buffer</b>	Preservative: 0.1% Sodium azide Constituent: 0.2% BSA
<b>Purity</b>	Protein G purified

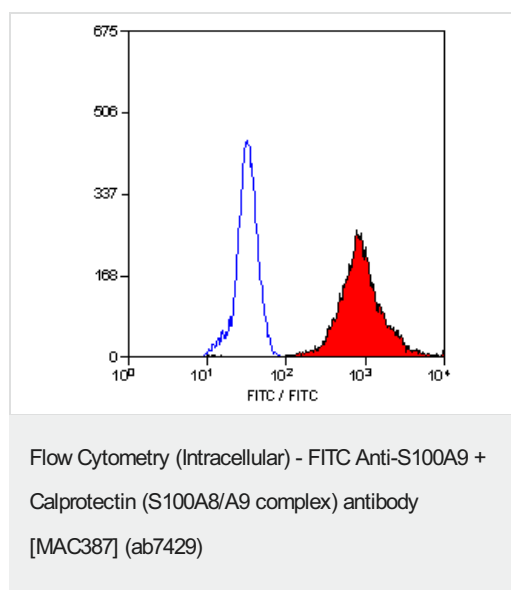
<b>Purification notes</b>	Purified IgG prepared by affinity chromatography on Protein G from tissue culture supernatant
<b>Clonality</b>	Monoclonal
<b>Clone number</b>	MAC387
<b>Myeloma</b>	NS1
<b>Isotype</b>	IgG1

## Applications

**The Abpromise guarantee** Our **Abpromise guarantee** covers the use of ab7429 in the following tested applications. The application notes include recommended starting dilutions; optimal dilutions/concentrations should be determined by the end user.

Application	Abreviews	Notes
<b>Flow Cyt (Intra)</b>		Use 10µl for 10 <sup>6</sup> cells. Membrane permeabilisation is required for this application. <b>ab91356</b> - Mouse monoclonal IgG1, is suitable for use as an isotype control with this antibody.

## Images



ab7429 staining S100A9 + Calprotectin (FITC) in human peripheral blood granulocyte by Intracellular Flow Cytometry analysis.

**Please note:** All products are "FOR RESEARCH USE ONLY. NOT FOR USE IN DIAGNOSTIC PROCEDURES"

## Our Abpromise to you: Quality guaranteed and expert technical support

- Replacement or refund for products not performing as stated on the datasheet
- Valid for 12 months from date of delivery
- Response to your inquiry within 24 hours
- We provide support in Chinese, English, French, German, Japanese and Spanish

- Extensive multi-media technical resources to help you
- We investigate all quality concerns to ensure our products perform to the highest standards

If the product does not perform as described on this datasheet, we will offer a refund or replacement. For full details of the Abpromise, please visit <https://www.abcam.com/abpromise> or contact our technical team.

#### **Terms and conditions**

---

- Guarantee only valid for products bought direct from Abcam or one of our authorized distributors