



Product datasheet

FITC Anti-TCR V beta 3.1 antibody [8F10], prediluted ab171112

[1 Image](#)

Overview

Product name	FITC Anti-TCR V beta 3.1 antibody [8F10], prediluted
Description	FITC Mouse monoclonal [8F10] to TCR V beta 3.1, prediluted
Host species	Mouse
Conjugation	FITC. Ex: 493nm, Em: 528nm
Tested applications	Suitable for: Flow Cyt
Species reactivity	Reacts with: Human
Immunogen	Recombinant full length protein corresponding to Human TCR V beta 3.1 aa 1-133. Sequence: MGTSLLCWMALCLLGADHADTGVSQNPRHNITKRGQNVT FRCDPISEHNR LYWYRQTLGQ GPEFLTYFQNEAQLEKSRLLSDRFSAERPKGFSFSTLEI QRTEQGDSAMYLCASSLAGLNQPQHFGDGTRLSIL Database link: P04435  Run BLAST with  Run BLAST with
Positive control	Flow Cyt: PBMC cells.
General notes	<p>The Life Science industry has been in the grips of a reproducibility crisis for a number of years. Abcam is leading the way in addressing this with our range of recombinant monoclonal antibodies and knockout edited cell lines for gold-standard validation. Please check that this product meets your needs before purchasing.</p> <p>If you have any questions, special requirements or concerns, please send us an inquiry and/or contact our Support team ahead of purchase. Recommended alternatives for this product can be found below, along with publications, customer reviews and Q&As</p>

Properties

Form	Liquid
Storage instructions	Shipped at 4°C. Store at +4°C. Store In the Dark.
Storage buffer	Preservative: 0.1% Sodium azide Constituents: 99% PBS, 0.5% BSA

Purity	Protein G purified
Clonality	Monoclonal
Clone number	8F10
Isotype	IgG1

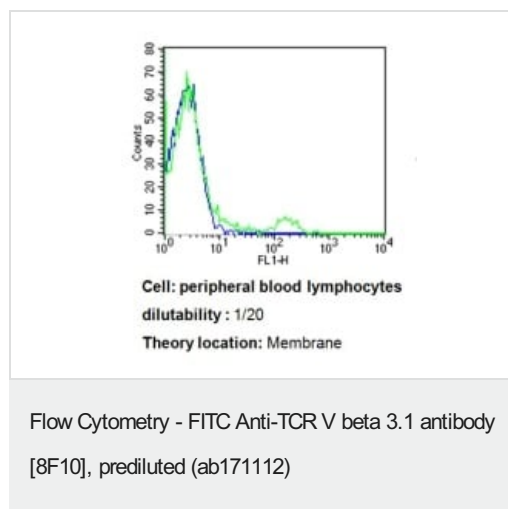
Applications

The Abpromise guarantee Our **Abpromise guarantee** covers the use of ab171112 in the following tested applications. The application notes include recommended starting dilutions; optimal dilutions/concentrations should be determined by the end user.

Application	Abreviews	Notes
Flow Cyt		Use a concentration of 200 µg/ml. ab91356 - Mouse monoclonal IgG1, is suitable for use as an isotype control with this antibody.

Target

Images



Flow cytometry analysis of TCR V beta 3.1 in PBMC cells compared to an isotype control (blue). Human blood was collected, combined with a hydrophilic polysaccharide, centrifuged, transferred to a conical tube and washed with PBS. 50 µl of cell solution was added to each tube at a dilution of 2×10^7 cells/ml, followed by the addition of 50 µl of isotype control and primary antibody (ab171112) at a dilution of 1:20. Cells were incubated for 30 min at 4°C and washed with a cell buffer, followed by incubation with a DyLight 488-conjugated goat anti-mouse IgG (H+L) secondary for 30 min at 4°C in the dark. FACS analysis was performed using 400 µl of cell buffer.

Please note: All products are "FOR RESEARCH USE ONLY. NOT FOR USE IN DIAGNOSTIC PROCEDURES"

Our Abpromise to you: Quality guaranteed and expert technical support

- Replacement or refund for products not performing as stated on the datasheet
- Valid for 12 months from date of delivery
- Response to your inquiry within 24 hours
- We provide support in Chinese, English, French, German, Japanese and Spanish
- Extensive multi-media technical resources to help you

- We investigate all quality concerns to ensure our products perform to the highest standards

If the product does not perform as described on this datasheet, we will offer a refund or replacement. For full details of the Abpromise, please visit <https://www.abcam.com/abpromise> or contact our technical team.

Terms and conditions

- Guarantee only valid for products bought direct from Abcam or one of our authorized distributors