

Product datasheet

FITC Anti-VCAM1 antibody [M/K-2] ab24853

[6 References](#) [1 Image](#)

Overview

| | |
|----------------------------|---|
| Product name | FITC Anti-VCAM1 antibody [M/K-2] |
| Description | FITC Rat monoclonal [M/K-2] to VCAM1 |
| Host species | Rat |
| Conjugation | FITC. Ex: 493nm, Em: 528nm |
| Tested applications | Suitable for: Flow Cyt |
| Species reactivity | Reacts with: Mouse |
| Immunogen | Tissue, cells or virus corresponding to Mouse VCAM1. BALB/3T3 and +/-2.4 cells |
| General notes | <p>The Life Science industry has been in the grips of a reproducibility crisis for a number of years. Abcam is leading the way in addressing this with our range of recombinant monoclonal antibodies and knockout edited cell lines for gold-standard validation. Please check that this product meets your needs before purchasing.</p> <p>If you have any questions, special requirements or concerns, please send us an inquiry and/or contact our Support team ahead of purchase. Recommended alternatives for this product can be found below, along with publications, customer reviews and Q&As</p> |

Properties

| | |
|-----------------------------|---|
| Form | Liquid |
| Storage instructions | Shipped at 4°C. Store at +4°C. Store In the Dark. |
| Storage buffer | pH: 7.4 |
| Purity | Affinity purified |
| Clonality | Monoclonal |
| Clone number | M/K-2 |
| Isotype | IgG1 |
| Light chain type | kappa |

Applications

The Abpromise guarantee Our **Abpromise guarantee** covers the use of ab24853 in the following tested applications.

The application notes include recommended starting dilutions; optimal dilutions/concentrations should be determined by the end user.

| Application | Abreviews | Notes |
|-------------|-----------|---|
| Flow Cyt | | Use 1µg for 10 ⁶ cells. ab18404 - Rat monoclonal IgG1, is suitable for use as an isotype control with this antibody. |

Target

Function

Important in cell-cell recognition. Appears to function in leukocyte-endothelial cell adhesion. Interacts with the beta-1 integrin VLA4 on leukocytes, and mediates both adhesion and signal transduction. The VCAM1/VLA4 interaction may play a pathophysiologic role both in immune responses and in leukocyte emigration to sites of inflammation.

Tissue specificity

Expressed on inflamed vascular endothelium, as well as on macrophage-like and dendritic cell types in both normal and inflamed tissue.

Sequence similarities

Contains 7 Ig-like C2-type (immunoglobulin-like) domains.

Domain

Either the first or the fourth Ig-like C2-type domain is required for VLA4-dependent cell adhesion.

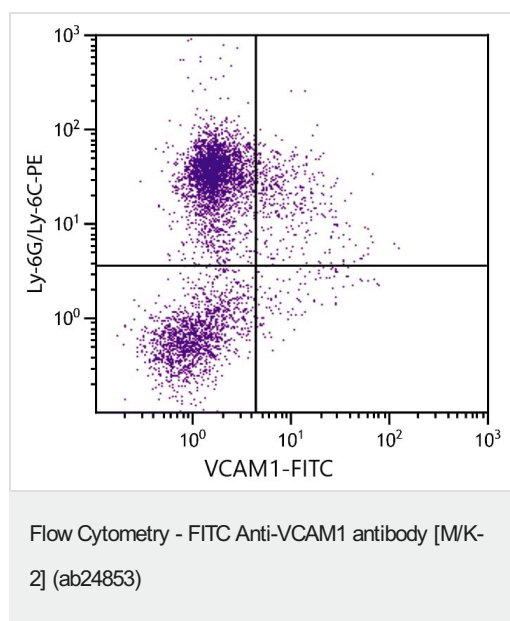
Post-translational modifications

Sialoglycoprotein.

Cellular localization

Membrane.

Images



Flow Cytometry analysis of C57BL/6 mouse bone marrow cells stained with anti VCAM1 antibody [M/K-2] (FITC) (ab24853) and Rat Anti-Mouse Ly-6G/Ly-6C-PE. 1 µg of antibody was used for 10⁶ cells.

Please note: All products are "FOR RESEARCH USE ONLY. NOT FOR USE IN DIAGNOSTIC PROCEDURES"

Our Abpromise to you: Quality guaranteed and expert technical support

- Replacement or refund for products not performing as stated on the datasheet
- Valid for 12 months from date of delivery
- Response to your inquiry within 24 hours
- We provide support in Chinese, English, French, German, Japanese and Spanish
- Extensive multi-media technical resources to help you
- We investigate all quality concerns to ensure our products perform to the highest standards

If the product does not perform as described on this datasheet, we will offer a refund or replacement. For full details of the Abpromise, please visit <https://www.abcam.com/abpromise> or contact our technical team.

Terms and conditions

- Guarantee only valid for products bought direct from Abcam or one of our authorized distributors