


## Product datasheet

### Anti-FKBP12 antibody ab24373

KO VALIDATED

★★★★★ [4 Abreviews](#) [11 References](#) [3 Images](#)

#### Overview

<b>Product name</b>	Anti-FKBP12 antibody
<b>Description</b>	Rabbit polyclonal to FKBP12
<b>Host species</b>	Rabbit
<b>Tested applications</b>	<b>Suitable for:</b> WB
<b>Species reactivity</b>	<b>Reacts with:</b> Mouse, Rat, Human <b>Predicted to work with:</b> Cow, Pig 
<b>Immunogen</b>	Synthetic peptide. This information is proprietary to Abcam and/or its suppliers.
<b>General notes</b>	<p>The Life Science industry has been in the grips of a reproducibility crisis for a number of years. Abcam is leading the way in addressing this with our range of recombinant monoclonal antibodies and knockout edited cell lines for gold-standard validation. Please check that this product meets your needs before purchasing.</p> <p>If you have any questions, special requirements or concerns, please send us an inquiry and/or contact our Support team ahead of purchase. Recommended alternatives for this product can be found below, along with publications, customer reviews and Q&amp;As</p>

#### Properties

<b>Form</b>	Liquid
<b>Storage instructions</b>	Shipped at 4°C. Store at +4°C short term (1-2 weeks). Upon delivery aliquot. Store at -20°C or -80°C. Avoid freeze / thaw cycle.
<b>Storage buffer</b>	<p>pH: 7.40</p> <p>Preservative: 0.02% Sodium azide</p> <p>Constituent: PBS</p> <p>Batches of this product that have a concentration &lt; 1mg/ml may have BSA added as a stabilising agent. If you would like information about the formulation of a specific lot, please contact our scientific support team who will be happy to help.</p>
<b>Purity</b>	Immunogen affinity purified
<b>Clonality</b>	Polyclonal

IsotypeIgG

Applications

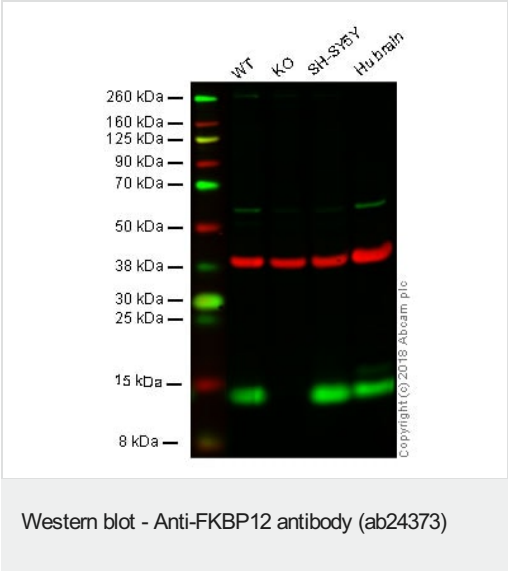
**The Abpromise guarantee** Our **Abpromise guarantee** covers the use of ab24373 in the following tested applications. The application notes include recommended starting dilutions; optimal dilutions/concentrations should be determined by the end user.

Application	Abreviews	Notes
WB	★★★★★ (2)	Use a concentration of 1 µg/ml. Detects a band of approximately 12 kDa (predicted molecular weight: 12 kDa).

Target

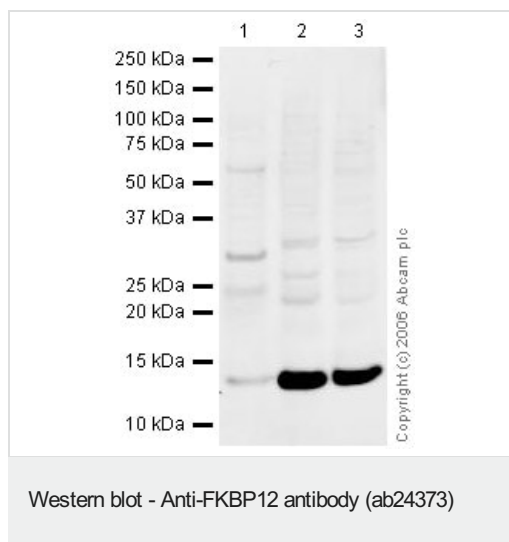
Function	May play a role in modulation of ryanodine receptor isoform-1 (RYR-1), a component of the calcium release channel of skeletal muscle sarcoplasmic reticulum. There are four molecules of FKBP12 per skeletal muscle RYR. PPlases accelerate the folding of proteins. It catalyzes the cis-trans isomerization of proline imidic peptide bonds in oligopeptides.
Sequence similarities	Belongs to the FKBP-type PPlase family. FKBP1 subfamily. Contains 1 PPlase FKBP-type domain.
Cellular localization	Cytoplasm.

Images



**Lane 1:** Wild-type HAP1 whole cell lysate (20 µg)  
**Lane 2:** FKBP1A knockout HAP1 whole cell lysate (20 µg)  
**Lane 3:** SH-SY5Y whole cell lysate (20 µg)  
**Lane 4:** Human brain whole tissue lysate (20 µg)  
**Lanes 1 - 4:** Merged signal (red and green). Green - ab24373 observed at 12 kDa. Red - loading control, **ab9484**, observed at 37 kDa.

ab24373 was shown to specifically react with FKBP12 in wild-type HAP1 cells as signal was lost in FKBP1A knockout cells. Wild-type and FKBP1A knockout samples were subjected to SDS-PAGE. ab24373 and **ab9484** (Mouse anti-GAPDH loading control) were incubated overnight at 4°C at 1 µg/ml and 1/20000 dilution respectively. Blots were developed with Goat anti-Rabbit IgG H&L (IRDye® 800CW) preabsorbed **ab216773** and Goat anti-Mouse IgG H&L (IRDye® 680RD) preabsorbed **ab216776** secondary antibodies at 1/20000 dilution for 1 hour at room temperature before imaging.



**All lanes :** Anti-FKBP12 antibody (ab24373) at 1 µg/ml

**Lane 1 :** Human Brain Tissue Lysate

**Lane 2 :** Mouse Brain Tissue Lysate

**Lane 3 :** Rat Brain Tissue Lysate

Lysates/proteins at 20 µg per lane.

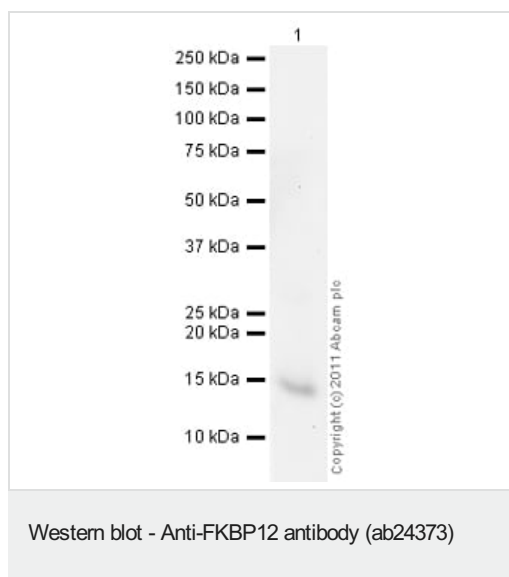
#### Secondary

**All lanes :** Goat polyclonal to Rabbit IgG (Alexa Fluor® 680) at 1/10000 dilution

Performed under reducing conditions.

**Predicted band size:** 12 kDa

**Observed band size:** 12 kDa



Anti-FKBP12 antibody (ab24373) at 1 µg/ml + Recombinant Human FKBP12 protein ([ab56524](#)) at 0.1 µg

#### Secondary

Goat Anti-Rabbit IgG H&L (HRP) preadsorbed ([ab97080](#)) at 1/5000 dilution

Developed using the ECL technique.

Performed under reducing conditions.

**Predicted band size:** 12 kDa

**Exposure time:** 2 minutes

**Please note:** All products are "FOR RESEARCH USE ONLY. NOT FOR USE IN DIAGNOSTIC PROCEDURES"

#### Our Promise to you: Quality guaranteed and expert technical support

- Replacement or refund for products not performing as stated on the datasheet
- Valid for 12 months from date of delivery
- Response to your inquiry within 24 hours
- We provide support in Chinese, English, French, German, Japanese and Spanish

- Extensive multi-media technical resources to help you
- We investigate all quality concerns to ensure our products perform to the highest standards

If the product does not perform as described on this datasheet, we will offer a refund or replacement. For full details of the Abpromise, please visit <https://www.abcam.com/abpromise> or contact our technical team.

#### **Terms and conditions**

---

- Guarantee only valid for products bought direct from Abcam or one of our authorized distributors