

## Product datasheet

# Anti-FKBP52 antibody [EPR6619] ab124906

Recombinant RabMAb

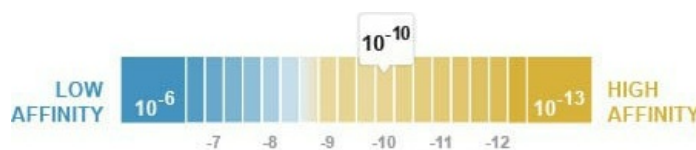
[1 References](#) [4 Images](#)

### Overview

<b>Product name</b>	Anti-FKBP52 antibody [EPR6619]
<b>Description</b>	Rabbit monoclonal [EPR6619] to FKBP52
<b>Host species</b>	Rabbit
<b>Tested applications</b>	<b>Suitable for:</b> WB, IHC-P <b>Unsuitable for:</b> Flow Cyt (Intra) or ICC/IF
<b>Species reactivity</b>	<b>Reacts with:</b> Human <b>Does not react with:</b> Mouse, Rat
<b>Immunogen</b>	Synthetic peptide within Human FKBP52 aa 400-500 (C terminal). The exact sequence is proprietary.
<b>Positive control</b>	HeLa, MCF7, Jurkat and K562 cell lysates; Human breast tissue
<b>General notes</b>	This product is a recombinant monoclonal antibody, which offers several advantages including: <ul style="list-style-type: none"> <li>- High batch-to-batch consistency and reproducibility</li> <li>- Improved sensitivity and specificity</li> <li>- Long-term security of supply</li> <li>- Animal-free production</li> </ul> For more information <a href="#">see here</a> . Our RabMAb <sup>®</sup> technology is a patented hybridoma-based technology for making rabbit monoclonal antibodies. For details on our patents, please refer to <a href="#">RabMAb<sup>®</sup> patents</a> .

### Properties

<b>Form</b>	Liquid
<b>Storage instructions</b>	Shipped at 4°C. Store at -20°C. Stable for 12 months at -20°C.
<b>Dissociation constant (K<sub>D</sub>)</b>	K <sub>D</sub> = 1.38 x 10 <sup>-10</sup> M



[Learn more about K<sub>D</sub>](#)

<b>Storage buffer</b>	pH: 7.20
-----------------------	----------

Preservative: 0.05% Sodium azide  
Constituents: 40% Glycerol (glycerin, glycerine), 9.85% Tris glycine, 50% Tissue culture supernatant

**Purity** Protein A purified  
**Clonality** Monoclonal  
**Clone number** EPR6619  
**Isotype** IgG

## Applications

**The Abpromise guarantee** Our **Abpromise guarantee** covers the use of ab124906 in the following tested applications. The application notes include recommended starting dilutions; optimal dilutions/concentrations should be determined by the end user.

Application	Abreviews	Notes
WB		1/50000 - 1/200000. Detects a band of approximately 52 kDa (predicted molecular weight: 52 kDa).
IHC-P		1/100 - 1/250. Perform heat mediated antigen retrieval before commencing with IHC staining protocol.

**Application notes** Is unsuitable for Flow Cyt (Intra) or ICC/IF.

## Target

**Function** Immunophilin protein with PPlase and co-chaperone activities (By similarity). Component of unliganded steroid receptors heterocomplexes through interaction with heat-shock protein 90 (HSP90). May play a role in the intracellular trafficking of heterooligomeric forms of steroid hormone receptors between cytoplasm and nuclear compartments (By similarity). The isomerase activity controls neuronal growth cones via regulation of TRPC1 channel opening. Acts also as a regulator of microtubule dynamics by inhibiting MAPT/TAU ability to promote microtubule assembly.

**Tissue specificity** Widely expressed.

**Sequence similarities** Contains 2 PPlase FKBP-type domains.

Contains 3 TPR repeats.

**Domain** The PPlase activity is mainly due to the first PPlase FKBP-type domain (1-138 AA).

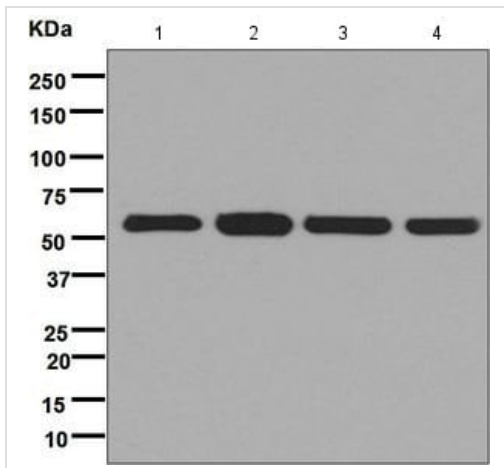
The C-terminal region (AA 375-458) is required to prevent tubulin polymerization.

The chaperone activity resides in the C-terminal region, mainly between amino acids 264 and 400.

**Post-translational modifications** Phosphorylation by CK2 results in loss of HSP90 binding activity (By similarity). Phosphorylated upon DNA damage, probably by ATM or ATR.

**Cellular localization** Cytoplasm > cytosol. Nucleus. Cytoplasm > cytoskeleton.

## Images



Western blot - Anti-FKBP52 antibody [EPR6619] (ab124906)

**All lanes :** Anti-FKBP52 antibody [EPR6619] (ab124906) at 1/50000 dilution

**Lane 1 :** HeLa cell lysate

**Lane 2 :** MCF7 cell lysate

**Lane 3 :** Jurkat cell lysate

**Lane 4 :** K562 cell lysate

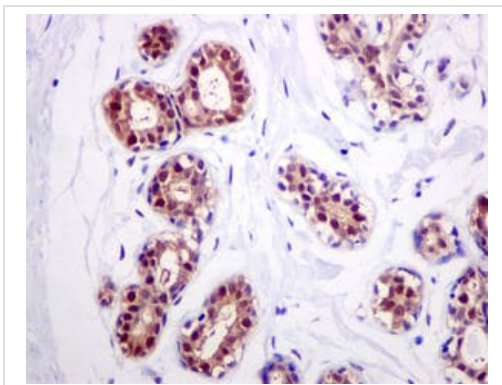
Lysates/proteins at 10 µg per lane.

### Secondary

**All lanes :** HRP labelled goat anti-rabbit at 1/2000 dilution

**Predicted band size:** 52 kDa

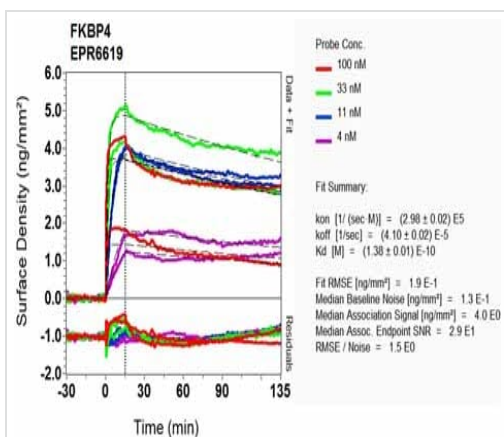
**Observed band size:** 52 kDa



Immunohistochemistry (Formalin/PFA-fixed paraffin-embedded sections) - Anti-FKBP52 antibody [EPR6619] (ab124906)

ab124906, at 1/100 dilution, staining FKBP52 in paraffin-embedded Human breast tissue by Immunohistochemistry.

Perform heat mediated antigen retrieval before commencing with IHC staining protocol.



Ox-RD Scanning - Anti-FKBP52 antibody [EPR6619] (ab124906)

Equilibrium disassociation constant ( $K_D$ )

Learn more about  $K_D$

[Click here to learn more about  \$K\_D\$](#)

### Why choose a recombinant antibody?



**Research with confidence**  
Consistent and reproducible results



**Long-term and scalable supply**  
Recombinant technology



**Success from the first experiment**  
Confirmed specificity



**Ethical standards compliant**  
Animal-free production

Anti-FKBP52 antibody [EPR6619] (ab124906)

**Please note:** All products are "FOR RESEARCH USE ONLY. NOT FOR USE IN DIAGNOSTIC PROCEDURES"

### Our Abpromise to you: Quality guaranteed and expert technical support

---

- Replacement or refund for products not performing as stated on the datasheet
- Valid for 12 months from date of delivery
- Response to your inquiry within 24 hours
- We provide support in Chinese, English, French, German, Japanese and Spanish
- Extensive multi-media technical resources to help you
- We investigate all quality concerns to ensure our products perform to the highest standards

If the product does not perform as described on this datasheet, we will offer a refund or replacement. For full details of the Abpromise, please visit <https://www.abcam.com/abpromise> or contact our technical team.

### Terms and conditions

---

- Guarantee only valid for products bought direct from Abcam or one of our authorized distributors