

Product datasheet

Anti-FKBP52 antibody [Hi52C] ab59460

[3 References](#) [4 Images](#)

Overview

Product name	Anti-FKBP52 antibody [Hi52C]
Description	Mouse monoclonal [Hi52C] to FKBP52
Host species	Mouse
Tested applications	Suitable for: Flow Cyt, IHC-P, ICC/IF
Species reactivity	Reacts with: Mouse, Human
Immunogen	Synthetic peptide corresponding to human FKBP52
Positive control	IHC-P: Human prostate tissue; Mouse backskin tissue. ICC/IF: HeLa cells. Flow Cyt: HeLa cells.
General notes	<p>The Life Science industry has been in the grips of a reproducibility crisis for a number of years. Abcam is leading the way in addressing this with our range of recombinant monoclonal antibodies and knockout edited cell lines for gold-standard validation. Please check that this product meets your needs before purchasing.</p> <p>If you have any questions, special requirements or concerns, please send us an inquiry and/or contact our Support team ahead of purchase. Recommended alternatives for this product can be found below, along with publications, customer reviews and Q&As</p>

Properties

Form	Liquid
Storage instructions	Shipped at 4°C. Store at -20°C. Stable for 12 months at -20°C.
Storage buffer	Preservative: 0.09% Sodium azide Constituents: PBS, 50% Glycerol
Purity	Protein G purified
Clonality	Monoclonal
Clone number	Hi52C
Isotype	IgG2a

Applications

The **Abpromise guarantee** Our **Abpromise guarantee** covers the use of ab59460 in the following tested applications.

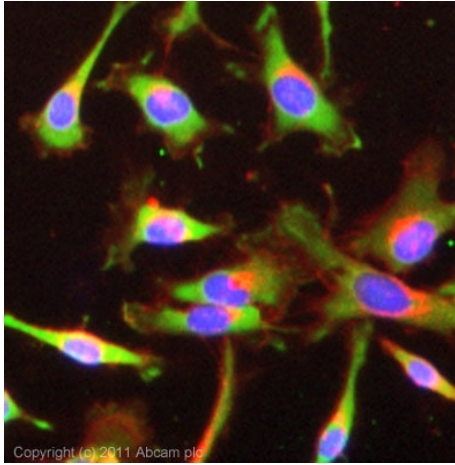
The application notes include recommended starting dilutions; optimal dilutions/concentrations should be determined by the end user.

Application	Abreviews	Notes
Flow Cyt		Use 1-2µg for 10 ⁶ cells. ab170190 - Mouse monoclonal IgG1, is suitable for use as an isotype control with this antibody.
IHC-P		Use at an assay dependent concentration.
ICC/IF		Use a concentration of 10 µg/ml.

Target

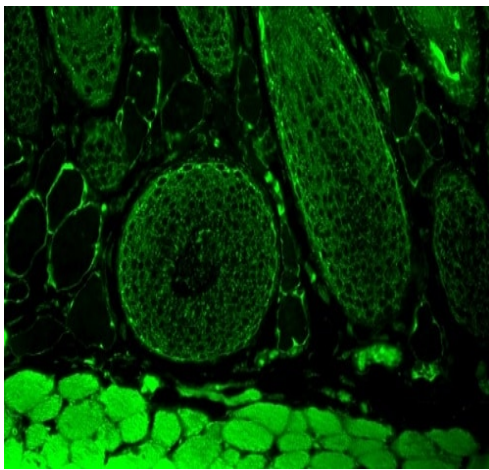
Function	Immunophilin protein with PPlase and co-chaperone activities (By similarity). Component of unliganded steroid receptors heterocomplexes through interaction with heat-shock protein 90 (HSP90). May play a role in the intracellular trafficking of heterooligomeric forms of steroid hormone receptors between cytoplasm and nuclear compartments (By similarity). The isomerase activity controls neuronal growth cones via regulation of TRPC1 channel opening. Acts also as a regulator of microtubule dynamics by inhibiting MAPT/TAU ability to promote microtubule assembly.
Tissue specificity	Widely expressed.
Sequence similarities	Contains 2 PPlase FKBP-type domains. Contains 3 TPR repeats.
Domain	The PPlase activity is mainly due to the first PPlase FKBP-type domain (1-138 AA). The C-terminal region (AA 375-458) is required to prevent tubulin polymerization. The chaperone activity resides in the C-terminal region, mainly between amino acids 264 and 400.
Post-translational modifications	Phosphorylation by CK2 results in loss of HSP90 binding activity (By similarity). Phosphorylated upon DNA damage, probably by ATM or ATR.
Cellular localization	Cytoplasm > cytosol. Nucleus. Cytoplasm > cytoskeleton.

Images



Immunocytochemistry/ Immunofluorescence - Anti-FKBP52 antibody [Hi52C] (ab59460)

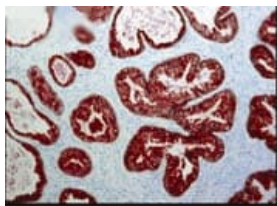
ICC/IF image of ab59460 stained HeLa cells. The cells were 100% methanol fixed (5 min) and then incubated in 1%BSA / 10% normal goat serum / 0.3M glycine in 0.1% PBS-Tween for 1h to permeabilise the cells and block non-specific protein-protein interactions. The cells were then incubated with the antibody (ab59460, 10µg/ml) overnight at +4°C. The secondary antibody (green) was [ab96879](#) Dylight 488 goat anti-mouse IgG (H+L) used at a 1/250 dilution for 1h. Alexa Fluor® 594 WGA was used to label plasma membranes (red) at a 1/200 dilution for 1h. DAPI was used to stain the cell nuclei (blue) at a concentration of 1.43µM.



Immunohistochemistry (Formalin/PFA-fixed paraffin-embedded sections) - Anti-FKBP52 antibody [Hi52C] (ab59460)

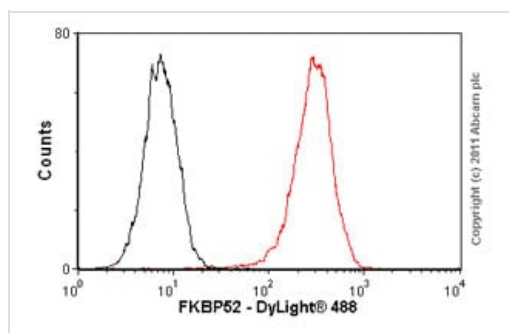
Paraffin-embedded mouse backskin tissue stained for FKBP52 using ab59460 at 1/100 dilution in immunohistochemical analysis.

Fixation: Bouin's Fixative. Secondary Antibody: FITC Goat Anti-Mouse (green) at 1/50 dilution for 1 hour at room temperature.



Immunohistochemistry (Formalin/PFA-fixed paraffin-embedded sections) - Anti-FKBP52 antibody [Hi52C] (ab59460)

ab59460 at 1/100 dilution staining FKBP52 in prostate tissue section by Immunohistochemistry (Bouin's fixative fixed paraffin-embedded tissue section). Antigen retrieval was done by microwave in citrate buffer. A HRP conjugated goat anti mouse secondary was used at 1/10 dilution.



Flow Cytometry - Anti-FKBP52 antibody [Hi52C]
(ab59460)

Overlay histogram showing HeLa cells stained with ab59460 (red line). The cells were fixed with 80% methanol (5 min) and then permeabilized with 0.1% PBS-Tween for 20 min. The cells were then incubated in 1x PBS / 10% normal goat serum / 0.3M glycine to block non-specific protein-protein interactions followed by the antibody (ab59460, 1µg/1x10⁶ cells) for 30 min at 22°C. The secondary antibody used was DyLight® 488 goat anti-mouse IgG (H+L) ([ab96879](#)) at 1/500 dilution for 30 min at 22°C. Isotype control antibody (black line) was mouse IgG1 [ICIGG1] ([ab91353](#), 2µg/1x10⁶ cells) used under the same conditions. Acquisition of >5,000 events was performed. This antibody gave a positive signal in HeLa cells fixed with 4% paraformaldehyde (10 min)/permeabilized with 0.1% PBS-Tween for 20 min used under the same conditions.

Please note: All products are "FOR RESEARCH USE ONLY. NOT FOR USE IN DIAGNOSTIC PROCEDURES"

Our Abpromise to you: Quality guaranteed and expert technical support

- Replacement or refund for products not performing as stated on the datasheet
- Valid for 12 months from date of delivery
- Response to your inquiry within 24 hours
- We provide support in Chinese, English, French, German, Japanese and Spanish
- Extensive multi-media technical resources to help you
- We investigate all quality concerns to ensure our products perform to the highest standards

If the product does not perform as described on this datasheet, we will offer a refund or replacement. For full details of the Abpromise, please visit <https://www.abcam.com/abpromise> or contact our technical team.

Terms and conditions

- Guarantee only valid for products bought direct from Abcam or one of our authorized distributors