

Product datasheet

Anti-Flavivirus E-glycoprotein antibody [HF8-3/D5-10/6/A6] ab214336

[1 References](#) [3 Images](#)

Overview

Product name	Anti-Flavivirus E-glycoprotein antibody [HF8-3/D5-10/6/A6]
Description	Mouse monoclonal [HF8-3/D5-10/6/A6] to Flavivirus E-glycoprotein
Host species	Mouse
Specificity	ab214336 reacts with a conformational epitope present in DENV1, 2, 3, 4, ZIKV, JEV and WNV.
Tested applications	Suitable for: Sandwich ELISA, WB, ICC/IF
Species reactivity	Reacts with: Dengue virus 1, Dengue virus 2, Dengue virus 3, Dengue virus 4, Japanese encephalitis virus, West Nile virus, Zika virus
Immunogen	Recombinant full length protein corresponding to Dengue virus 1 Flavivirus E-glycoprotein aa 250-800. Database link: P27909
Positive control	Sandwich ELISA: Zika infected C6/36 cells; WB: DENV1 (Hawaii), DENV2 (NGC), DENV3 (H89), DENV4 (H241), ZIKV (Cambodia), JEV (Nakayama), WNV (E101) infected C6/36 cell lysates; ICC/IF: DENV1, DENV2, DENV3, DENV4, ZIKV infected cells
General notes	<p>The Life Science industry has been in the grips of a reproducibility crisis for a number of years. Abcam is leading the way in addressing this with our range of recombinant monoclonal antibodies and knockout edited cell lines for gold-standard validation. Please check that this product meets your needs before purchasing.</p> <p>If you have any questions, special requirements or concerns, please send us an inquiry and/or contact our Support team ahead of purchase. Recommended alternatives for this product can be found below, along with publications, customer reviews and Q&As</p>

 [Run BLAST with](#)

 [Run BLAST with](#)

Properties

Form	Liquid
Storage instructions	Shipped at 4°C. Store at +4°C short term (1-2 weeks). Upon delivery aliquot. Store at -20°C long term. Avoid freeze / thaw cycle.
Storage buffer	Preservative: 0.1% Proclin 150 Constituents: 10% Fetal Bovine Serum (FBS), 89.9% RPMI 1640
Purity	Tissue culture supernatant

Clonality	Monoclonal
Clone number	HF8-3/D5-10/6/A6
Isotype	IgG1
Light chain type	kappa

Applications

The Abpromise guarantee Our **Abpromise guarantee** covers the use of ab214336 in the following tested applications.

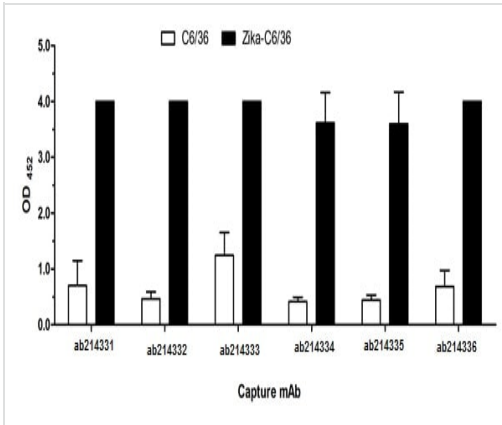
The application notes include recommended starting dilutions; optimal dilutions/concentrations should be determined by the end user.

Application	Abreviews	Notes
Sandwich ELISA		Use at an assay dependent concentration. Primarily used for the capture/detection of DENV1, 2, 3, 4, ZIKV, JEV and WNV antigens in an antigen capture ELISA.
WB		Use at an assay dependent concentration. Detects DENV1, 2, 3, 4, ZIKV, JEV and WNV by western blot (non-reducing conditions).
ICC/IF		Use at an assay dependent concentration. Detects DENV1, 2, 3, 4 and ZIKV in immunofluorescence. Not tested in FRNT. Can neutralize ZIKV in a standard VERO PRNT. Not tested against DENV, JEV and WNV by PRNT.

Target

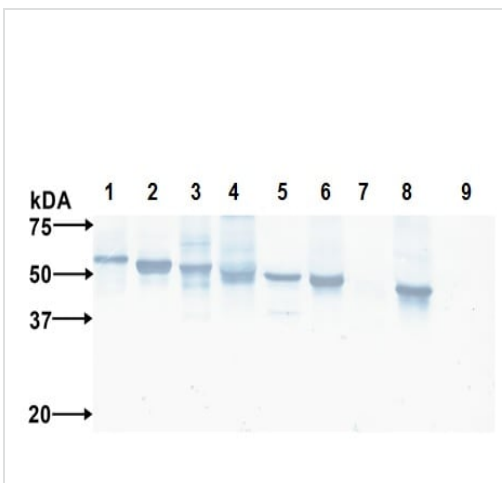
Relevance The Flaviviridae are a family of viruses that are primarily spread through arthropod vectors (mainly ticks and mosquitoes). Flaviviridae have monopartite, linear, single-stranded RNA genomes of positive polarity, 9.6- to 12.3-kilobase in length with enveloped and spherical virus particles, about 40-60 nm in diameter.

Images



Sandwich ELISA - Anti-Flavivirus E-glycoprotein antibody [HF8-3/D5-10/6/A6] (ab214336)

Sandwich ELISA detection Flavivirus E-glycoprotein in Zika infected and non infected C6/36 cells using ab214336 and other anti Flavivirus E-glycoprotein antibodies as capture antibody.



Western blot - Anti-Flavivirus E-glycoprotein antibody [HF8-3/D5-10/6/A6] (ab214336)

All lanes : Anti-Flavivirus E-glycoprotein antibody [HF8-3/D5-10/6/A6] (ab214336)

Lane 1 : DENV1 (Hawaii) infected C6/36 cell lysate

Lane 2 : DENV2 (NGC) infected C6/36 cell lysate

Lane 3 : DENV3 (H89) infected C6/36 cell lysate

Lane 4 : DENV4 (H241) infected C6/36 cell lysate

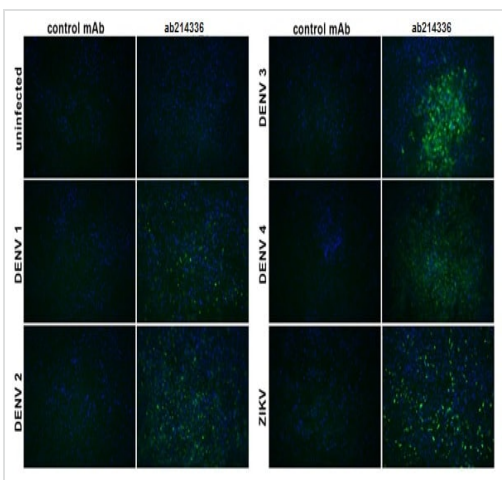
Lane 5 : ZIKV (Cambodia) infected C6/36 cell lysate

Lane 6 : JEV (Nakayama) infected C6/36 cell lysate

Lane 7 : YFV (17D) infected C6/36 cell lysate

Lane 8 : WNV (E101) infected C6/36 cell lysate

Lane 9 : uninfected C6/36 cell lysate control



Immunocytochemistry/ Immunofluorescence - Anti-Flavivirus E-glycoprotein antibody [HF8-3/D5-10/6/A6] (ab214336)

Immunofluorescent analysis of DENV1, DENV2, DENV3, DENV4 and ZIKV infected cells labeling Flavivirus E-glycoprotein using ab214336.

Please note: All products are "FOR RESEARCH USE ONLY. NOT FOR USE IN DIAGNOSTIC PROCEDURES"

Our Abpromise to you: Quality guaranteed and expert technical support

- Replacement or refund for products not performing as stated on the datasheet
- Valid for 12 months from date of delivery
- Response to your inquiry within 24 hours

- We provide support in Chinese, English, French, German, Japanese and Spanish
- Extensive multi-media technical resources to help you
- We investigate all quality concerns to ensure our products perform to the highest standards

If the product does not perform as described on this datasheet, we will offer a refund or replacement. For full details of the Abpromise, please visit <https://www.abcam.com/abpromise> or contact our technical team.

Terms and conditions

- Guarantee only valid for products bought direct from Abcam or one of our authorized distributors