

Product datasheet

Anti-FLI1 antibody - C-terminal ab180902

[1 References](#) [2 Images](#)

Overview

Product name	Anti-FLI1 antibody - C-terminal
Description	Rabbit polyclonal to FLI1 - C-terminal
Host species	Rabbit
Specificity	At least four isoforms of FLI1 are known to exist; this antibody will detect all four.
Tested applications	Suitable for: ICC/IF, WB
Species reactivity	Reacts with: Human
Immunogen	Synthetic peptide within Human FLI1 (C terminal). The exact sequence is proprietary. 17 amino acid peptide near the C-terminus of Human FLI1. Database link: Q01543
Positive control	Jurkat whole cell lysate (ab7899); HeLa cells.
General notes	<p>The Life Science industry has been in the grips of a reproducibility crisis for a number of years. Abcam is leading the way in addressing this with our range of recombinant monoclonal antibodies and knockout edited cell lines for gold-standard validation. Please check that this product meets your needs before purchasing.</p> <p>If you have any questions, special requirements or concerns, please send us an inquiry and/or contact our Support team ahead of purchase. Recommended alternatives for this product can be found below, along with publications, customer reviews and Q&As</p>

Properties

Form	Liquid
Storage instructions	Shipped at 4°C. Store at +4°C short term (1-2 weeks). Upon delivery aliquot. Store at -20°C long term. Avoid freeze / thaw cycle.
Storage buffer	pH: 7.2 Preservative: 0.02% Sodium azide Constituent: 99% PBS
Purity	Immunogen affinity purified
Clonality	Polyclonal
Isotype	IgG

Applications

The Abpromise guarantee

Our **Abpromise guarantee** covers the use of ab180902 in the following tested applications.

The application notes include recommended starting dilutions; optimal dilutions/concentrations should be determined by the end user.

Application	Abreviews	Notes
ICC/IF		Use a concentration of 5 µg/ml.
WB		Use a concentration of 0.5 - 1 µg/ml. Detects a band of approximately 52 kDa (predicted molecular weight: 51 kDa).

Target

Function

Sequence-specific transcriptional activator. Recognizes the DNA sequence 5'-C[CA]GGAAGT-3'.

Involvement in disease

Defects in FLI1 are a cause of Ewing sarcoma (ES) [MIM:612219]. A highly malignant, metastatic, primitive small round cell tumor of bone and soft tissue that affects children and adolescents. It belongs to the Ewing sarcoma family of tumors, a group of morphologically heterogeneous neoplasms that share the same cytogenetic features. They are considered neural tumors derived from cells of the neural crest. Ewing sarcoma represents the less differentiated form of the tumors. Note=A chromosomal aberration involving FLI1 is found in patients with Erwing sarcoma. Translocation t(11;22)(q24;q12) with EWSR1.

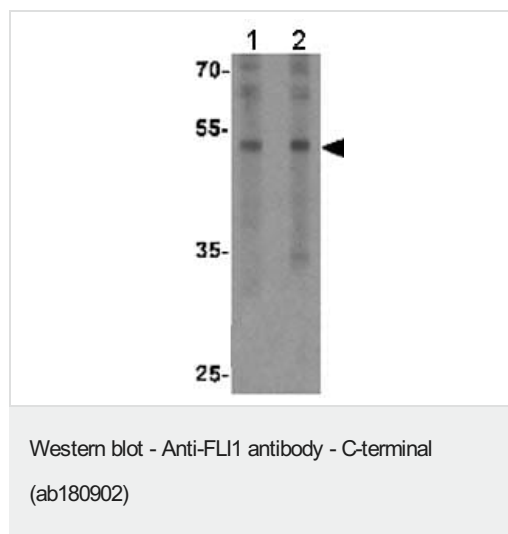
Sequence similarities

Belongs to the ETS family.
Contains 1 ETS DNA-binding domain.
Contains 1 PNT (pointed) domain.

Cellular localization

Nucleus.

Images



Lane 1 : Anti-FLI1 antibody - C-terminal (ab180902) at 0.5 µg/ml

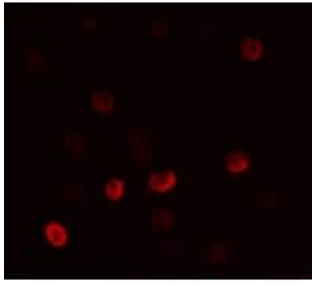
Lane 2 : Anti-FLI1 antibody - C-terminal (ab180902) at 1 µg/ml

All lanes : Jurkat cell lysate

Lysates/proteins at 15 µg per lane.

Predicted band size: 51 kDa

Additional bands at: 52 kDa. We are unsure as to the identity of these extra bands.



Immunofluorescent analysis of HeLa cells labeling FLI1 with ab180902 at 5 µg/ml.

Immunocytochemistry/ Immunofluorescence - Anti-FLI1 antibody - C-terminal (ab180902)

Please note: All products are "FOR RESEARCH USE ONLY. NOT FOR USE IN DIAGNOSTIC PROCEDURES"

Our Abpromise to you: Quality guaranteed and expert technical support

- Replacement or refund for products not performing as stated on the datasheet
- Valid for 12 months from date of delivery
- Response to your inquiry within 24 hours
- We provide support in Chinese, English, French, German, Japanese and Spanish
- Extensive multi-media technical resources to help you
- We investigate all quality concerns to ensure our products perform to the highest standards

If the product does not perform as described on this datasheet, we will offer a refund or replacement. For full details of the Abpromise, please visit <https://www.abcam.com/abpromise> or contact our technical team.

Terms and conditions

- Guarantee only valid for products bought direct from Abcam or one of our authorized distributors