


Anti-Flotillin 1 antibody - C-terminal ab228585

2 Images

Overview

Product name	Anti-Flotillin 1 antibody - C-terminal
Description	Rabbit polyclonal to Flotillin 1 - C-terminal
Host species	Rabbit
Tested applications	Suitable for: IP, WB
Species reactivity	Reacts with: Human Predicted to work with: Cow, Pig, Chimpanzee, Rhesus monkey 
Immunogen	Synthetic peptide within Human Flotillin 1 (C terminal). The exact sequence is proprietary. Conjugated to a carrier protein. Database link: O75955
Positive control	WB: HepG2 whole cell lysate. IP: HCT-116 whole cell extract.
General notes	<p>The Life Science industry has been in the grips of a reproducibility crisis for a number of years. Abcam is leading the way in addressing this with our range of recombinant monoclonal antibodies and knockout edited cell lines for gold-standard validation. Please check that this product meets your needs before purchasing.</p> <p>If you have any questions, special requirements or concerns, please send us an inquiry and/or contact our Support team ahead of purchase. Recommended alternatives for this product can be found below, along with publications, customer reviews and Q&As</p>

Properties

Form	Liquid
Storage instructions	Shipped at 4°C. Store at +4°C short term (1-2 weeks). Upon delivery aliquot. Store at -20°C long term. Avoid freeze / thaw cycle.
Storage buffer	pH: 7.00 Preservative: 0.01% Thimerosal (merthiolate) Constituents: 1.21% Tris, 0.75% Glycine, 20% Glycerol (glycerin, glycerine)
Purity	Immunogen affinity purified
Clonality	Polyclonal
Isotype	IgG

Applications

The Abpromise guarantee

Our **Abpromise guarantee** covers the use of ab228585 in the following tested applications.

The application notes include recommended starting dilutions; optimal dilutions/concentrations should be determined by the end user.

Application	Abreviews	Notes
IP		1/100 - 1/500.
WB		1/500 - 1/3000. Predicted molecular weight: 47 kDa.

Target

Function

May act as a scaffolding protein within caveolar membranes, functionally participating in formation of caveolae or caveolae-like vesicles.

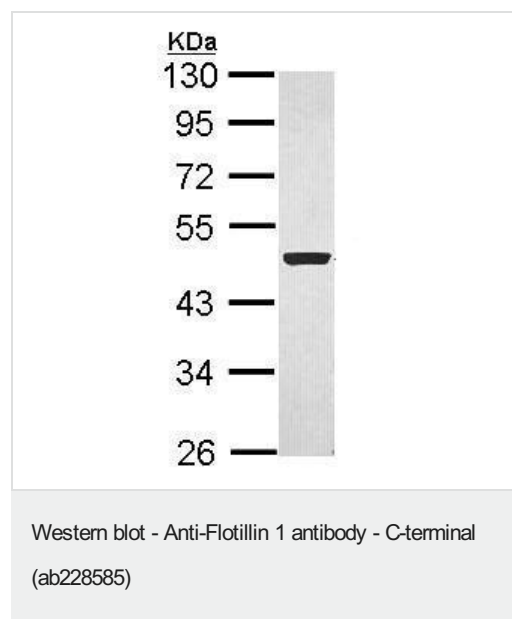
Sequence similarities

Belongs to the band 7/mec-2 family. Flotillin subfamily.

Cellular localization

Cell membrane. Membrane > caveola. Melanosome. Endosome. Membrane-associated protein of caveolae. Identified by mass spectrometry in melanosome fractions from stage I to stage IV.

Images

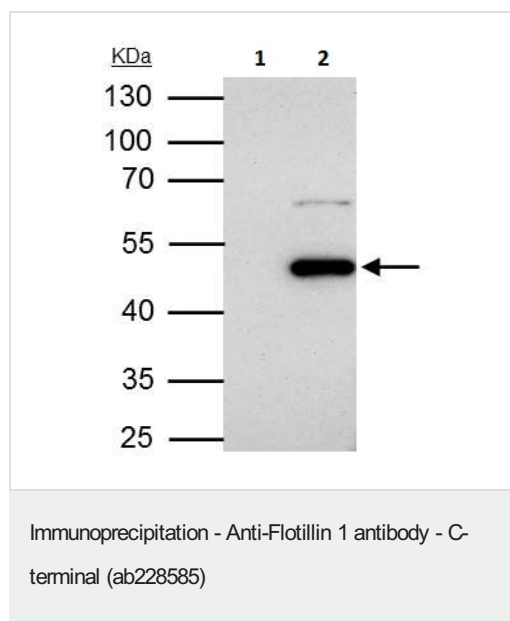


Anti-Flotillin 1 antibody - C-terminal (ab228585) at 1/1000 dilution + HepG2 (human liver hepatocellular carcinoma cell line) whole cell lysate at 30 µg

Developed using the ECL technique.

Predicted band size: 47 kDa

10% SDS-PAGE



Flotillin 1 was immunoprecipitated from HCT-116 (human colorectal carcinoma cell line) whole cell extract with 4 µg ab228585. Western blot was performed from the immunoprecipitate using ab228585 at 1/1000 dilution.

Lane 1: Control pre-immune IgG IP in HCT-116 whole cell extract.

Lane 2: ab228585 IP in HCT-116 whole cell extract.

10% SDS-PAGE

Please note: All products are "FOR RESEARCH USE ONLY. NOT FOR USE IN DIAGNOSTIC PROCEDURES"

Our Abpromise to you: Quality guaranteed and expert technical support

- Replacement or refund for products not performing as stated on the datasheet
- Valid for 12 months from date of delivery
- Response to your inquiry within 24 hours
- We provide support in Chinese, English, French, German, Japanese and Spanish
- Extensive multi-media technical resources to help you
- We investigate all quality concerns to ensure our products perform to the highest standards

If the product does not perform as described on this datasheet, we will offer a refund or replacement. For full details of the Abpromise, please visit <https://www.abcam.com/abpromise> or contact our technical team.

Terms and conditions

- Guarantee only valid for products bought direct from Abcam or one of our authorized distributors