

Product datasheet

Anti-Fluorescein antibody ab6644

[1 Image](#)

Overview

Product name	Anti-Fluorescein antibody
Description	Goat polyclonal to Fluorescein
Host species	Goat
Tested applications	Suitable for: ELISA, WB
Species reactivity	Reacts with: Species independent
Immunogen	Chemical/ Small Molecule corresponding to Fluorescein. Fluorescein conjugated to Goat IgG
General notes	<p>The Life Science industry has been in the grips of a reproducibility crisis for a number of years. Abcam is leading the way in addressing this with our range of recombinant monoclonal antibodies and knockout edited cell lines for gold-standard validation. Please check that this product meets your needs before purchasing.</p> <p>If you have any questions, special requirements or concerns, please send us an inquiry and/or contact our Support team ahead of purchase. Recommended alternatives for this product can be found below, along with publications, customer reviews and Q&As</p>

Properties

Form	Liquid
Storage instructions	Shipped at 4°C. Store at +4°C short term (1-2 weeks). Upon delivery aliquot. Store at -20°C or -80°C. Avoid freeze / thaw cycle.
Storage buffer	Preservative: 0.01% Sodium azide Constituents: 0.42% Potassium phosphate, 0.87% Sodium chloride
Purity	Immunogen affinity purified
Purification notes	This product was prepared from monospecific antiserum by immunoaffinity chromatography using Fluorescein IgG coupled to agarose beads followed by solid phase adsorption(s) to remove any unwanted reactivities.
Clonality	Polyclonal
Isotype	IgG

Applications

The Abpromise guarantee

Our **Abpromise guarantee** covers the use of ab6644 in the following tested applications.

The application notes include recommended starting dilutions; optimal dilutions/concentrations should be determined by the end user.

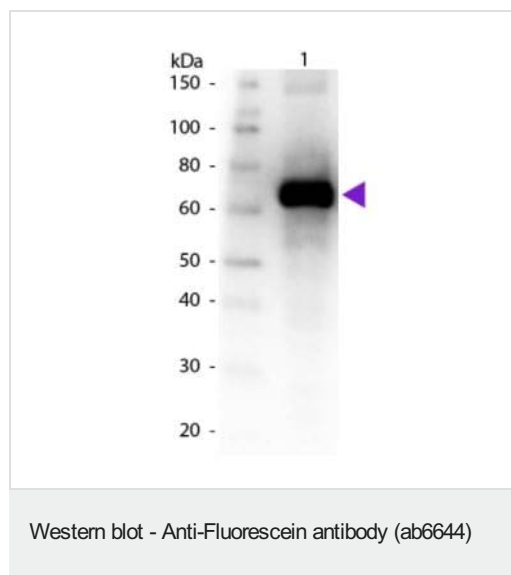
Application	Abreviews	Notes
ELISA		Use at an assay dependent concentration.
WB		1/500 - 1/3000.

Target

Relevance

Fluorescein is a fluorophore commonly used to label proteins - protein-fluorescein conjugates are not usually susceptible to precipitation. In addition to its relatively high absorptivity, excellent fluorescence quantum yield and good water solubility, fluorescein has an excitation maximum of 494 nm that closely matches the 488 nm spectral line of the argon-ion laser, making it an important fluorophore for confocal laser-scanning microscopy and flow cytometry applications. Its fluorescence is pH sensitive and is significantly reduced below pH 7. Fluorescein emits most strongly between 500 and 550 nm, but it has a relatively broad emission spectrum reaching to over 600 nm. Several derivatives of fluorescein are commonly used, including FITC (fluorescein isothiocyanate), carboxylates and succinimidyl esters.

Images



Anti-Fluorescein antibody (ab6644) at 1/1000 dilution + BSA conjugated Fluorescein at 0.05 µg

Secondary

Goat secondary antibody (HRP) at 1/40000 dilution

Observed band size: 67 kDa

Primary antibody incubated overnight at 4°C.

Secondary antibody incubated for 30 minutes at room temperature.

Please note: All products are "FOR RESEARCH USE ONLY. NOT FOR USE IN DIAGNOSTIC PROCEDURES"

Our Abpromise to you: Quality guaranteed and expert technical support

- Replacement or refund for products not performing as stated on the datasheet
- Valid for 12 months from date of delivery
- Response to your inquiry within 24 hours

- We provide support in Chinese, English, French, German, Japanese and Spanish
- Extensive multi-media technical resources to help you
- We investigate all quality concerns to ensure our products perform to the highest standards

If the product does not perform as described on this datasheet, we will offer a refund or replacement. For full details of the Abpromise, please visit <https://www.abcam.com/abpromise> or contact our technical team.

Terms and conditions

- Guarantee only valid for products bought direct from Abcam or one of our authorized distributors