


### Anti-FOLR2 antibody ab103998

2 Images

#### Overview

<b>Product name</b>	Anti-FOLR2 antibody
<b>Description</b>	Rabbit polyclonal to FOLR2
<b>Host species</b>	Rabbit
<b>Tested applications</b>	<b>Suitable for:</b> ICC/IF, WB
<b>Species reactivity</b>	<b>Reacts with:</b> Human <b>Predicted to work with:</b> Rat 
<b>Immunogen</b>	Synthetic peptide corresponding to Human FOLR2 aa 1-100 conjugated to keyhole limpet haemocyanin. (Peptide available as <a href="#">ab104497</a> )
<b>Positive control</b>	This antibody gave a positive signal in the following human tissue lysates: Spleen; Bone marrow; Thymus
<b>General notes</b>	<p>The Life Science industry has been in the grips of a reproducibility crisis for a number of years. Abcam is leading the way in addressing this with our range of recombinant monoclonal antibodies and knockout edited cell lines for gold-standard validation. Please check that this product meets your needs before purchasing.</p> <p>If you have any questions, special requirements or concerns, please send us an inquiry and/or contact our Support team ahead of purchase. Recommended alternatives for this product can be found below, along with publications, customer reviews and Q&amp;As</p>

#### Properties

<b>Form</b>	Liquid
<b>Storage instructions</b>	Shipped at 4°C. Store at +4°C short term (1-2 weeks). Upon delivery aliquot. Store at -20°C or -80°C. Avoid freeze / thaw cycle.
<b>Storage buffer</b>	pH: 7.40 Preservative: 0.02% Sodium azide Constituent: PBS

Batches of this product that have a concentration < 1mg/ml may have BSA added as a stabilising agent. If you would like information about the formulation of a specific lot, please contact our scientific support team who will be happy to help.

<b>Purity</b>	Immunogen affinity purified
<b>Clonality</b>	Polyclonal
<b>Isotype</b>	IgG

## Applications

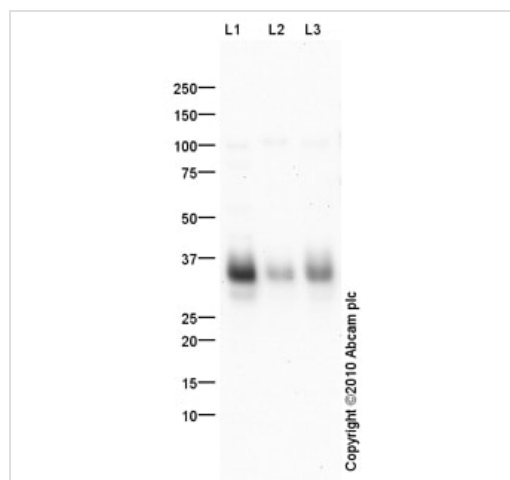
**The Abpromise guarantee** Our **Abpromise guarantee** covers the use of ab103998 in the following tested applications. The application notes include recommended starting dilutions; optimal dilutions/concentrations should be determined by the end user.

Application	Abreviews	Notes
<b>ICC/IF</b>		Use a concentration of 5 µg/ml.
<b>WB</b>		Use a concentration of 1 µg/ml. Detects a band of approximately 35 kDa (predicted molecular weight: 32 kDa).

## Target

<b>Function</b>	Binds to folate and reduced folic acid derivatives and mediates delivery of 5-methyltetrahydrofolate to the interior of cells.
<b>Tissue specificity</b>	Expressed in placenta and hematopoietic cells. Expression is increased in malignant tissues.
<b>Sequence similarities</b>	Belongs to the folate receptor family.
<b>Post-translational modifications</b>	Eight disulfide bonds are present. N-glycosylated.
<b>Cellular localization</b>	Cell membrane. Secreted.

## Images



Western blot - Anti-FOLR2 antibody (ab103998)

**All lanes** : Anti-FOLR2 antibody (ab103998) at 1 µg/ml

**Lane 1** : Human spleen tissue lysate - total protein ([ab29699](#))

**Lane 2** : Bone marrow (Human) Tissue Lysate

**Lane 3** : Human thymus tissue lysate - total protein ([ab30146](#))

Lysates/proteins at 10 µg per lane.

### Secondary

**All lanes** : Goat Anti-Rabbit IgG H&L (HRP) preadsorbed ([ab97080](#)) at 1/5000 dilution

Developed using the ECL technique.

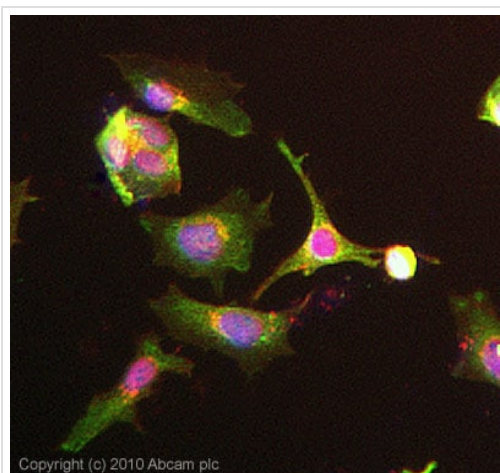
Performed under reducing conditions.

**Predicted band size:** 32 kDa

**Observed band size:** 35 kDa

**Exposure time:** 8 minutes

FOLR2 contains a number of potential glycosylation sites (SwissProt) which may explain its migration at a higher molecular weight than predicted.



Immunocytochemistry/ Immunofluorescence - Anti-FOLR2 antibody (ab103998)

ICC/IF image of ab103998 stained HeLa cells. The cells were 4% formaldehyde fixed (10 min) and then incubated in 1%BSA / 10% normal goat serum / 0.3M glycine in 0.1% PBS-Tween for 1h to permeabilise the cells and block non-specific protein-protein interactions. The cells were then incubated with the antibody ab103998 at 5µg/ml overnight at +4°C. The secondary antibody (green) was Alexa Fluor® 488 goat anti- rabbit IgG (H+L) used at a 1/1000 dilution for 1h. Alexa Fluor® 594 WGA was used to label plasma membranes (red) at a 1/200 dilution for 1h. DAPI was used to stain the cell nuclei (blue) at a concentration of 1.43µM. This antibody also gave a positive result in Hek293, HepG2, and MCF-7 formaldehyde fixed cells at 5ug/ml and also in HeLa, Hek293, HepG2, and MCF-7 Methanol fixed cells at 5ug/ml.

**Please note:** All products are "FOR RESEARCH USE ONLY. NOT FOR USE IN DIAGNOSTIC PROCEDURES"

### Our Abpromise to you: Quality guaranteed and expert technical support

- Replacement or refund for products not performing as stated on the datasheet
- Valid for 12 months from date of delivery
- Response to your inquiry within 24 hours
- We provide support in Chinese, English, French, German, Japanese and Spanish
- Extensive multi-media technical resources to help you
- We investigate all quality concerns to ensure our products perform to the highest standards

If the product does not perform as described on this datasheet, we will offer a refund or replacement. For full details of the Abpromise, please visit <https://www.abcam.com/abpromise> or contact our technical team.

### Terms and conditions

- Guarantee only valid for products bought direct from Abcam or one of our authorized distributors