


Anti-Frizzled 2/FZD2 antibody ab150477

[1 References](#) [1 Image](#)

Overview

Product name	Anti-Frizzled 2/FZD2 antibody
Description	Rabbit polyclonal to Frizzled 2/FZD2
Host species	Rabbit
Specificity	BLAST analysis of the peptide immunogen showed no homology with other Human proteins, except FZD7 (60%), DMAP1 (40%).
Tested applications	Suitable for: IHC-P
Species reactivity	Reacts with: Human Predicted to work with: Mouse, Rat, Rabbit, Horse, Hamster, Cow, Dog, Pig, Monkey, Gorilla 
Immunogen	Synthetic peptide corresponding to Human Frizzled 2/FZD2 (N terminal). Database link: NP_001457.1
Positive control	Human fetal kidney tissue
General notes	<p>The Life Science industry has been in the grips of a reproducibility crisis for a number of years. Abcam is leading the way in addressing this with our range of recombinant monoclonal antibodies and knockout edited cell lines for gold-standard validation. Please check that this product meets your needs before purchasing.</p> <p>If you have any questions, special requirements or concerns, please send us an inquiry and/or contact our Support team ahead of purchase. Recommended alternatives for this product can be found below, along with publications, customer reviews and Q&As</p>

Properties

Form	Liquid
Storage instructions	Shipped at 4°C.
Storage buffer	pH: 7.4 Preservative: 0.1% Sodium azide Constituent: 99% PBS
Purity	Immunogen affinity purified
Clonality	Polyclonal
Isotype	IgG

Applications

The Abpromise guarantee Our **Abpromise guarantee** covers the use of ab150477 in the following tested applications. The application notes include recommended starting dilutions; optimal dilutions/concentrations should be determined by the end user.

Application	Abreviews	Notes
IHC-P		Use a concentration of 8 µg/ml. Perform heat mediated antigen retrieval before commencing with IHC staining protocol.

Target

Function

Receptor for Wnt proteins. Most of frizzled receptors are coupled to the beta-catenin canonical signaling pathway, which leads to the activation of disheveled proteins, inhibition of GSK-3 kinase, nuclear accumulation of beta-catenin and activation of Wnt target genes. A second signaling pathway involving PKC and calcium fluxes has been seen for some family members, but it is not yet clear if it represents a distinct pathway or if it can be integrated in the canonical pathway, as PKC seems to be required for Wnt-mediated inactivation of GSK-3 kinase. Both pathways seem to involve interactions with G-proteins. May be involved in transduction and intercellular transmission of polarity information during tissue morphogenesis and/or in differentiated tissues.

Tissue specificity

Widely expressed. In the adult, mainly found in heart, placenta, skeletal muscle, lung, kidney, pancreas, prostate, testis, ovary and colon. In the fetus, expressed in brain, lung and kidney. Low levels in fetal liver.

Sequence similarities

Belongs to the G-protein coupled receptor Fz/Smo family.
Contains 1 FZ (frizzled) domain.

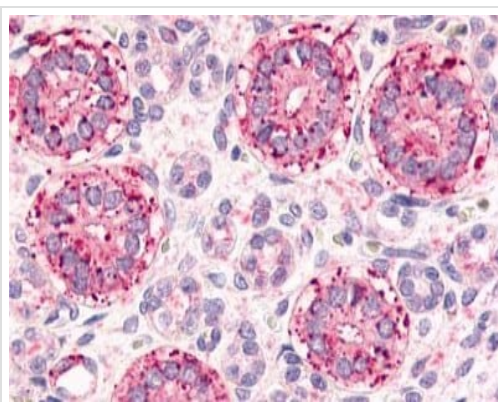
Domain

Lys-Thr-X-X-X-Trp motif is involved in the activation of the Wnt/beta-catenin signaling pathway. The FZ domain is involved in binding with Wnt ligands.

Cellular localization

Membrane.

Images



Immunohistochemical analysis of paraffin embedded Human fetal kidney tissue labelling Frizzled 2/FZD2 with ab150477 antibody at a concentration of 8 µg/ml.

Immunohistochemistry (Formalin/PFA-fixed paraffin-embedded sections) - Anti-Frizzled 2/FZD2 antibody (ab150477)

Please note: All products are "FOR RESEARCH USE ONLY. NOT FOR USE IN DIAGNOSTIC PROCEDURES"

Our Abpromise to you: Quality guaranteed and expert technical support

- Replacement or refund for products not performing as stated on the datasheet
- Valid for 12 months from date of delivery
- Response to your inquiry within 24 hours

- We provide support in Chinese, English, French, German, Japanese and Spanish
- Extensive multi-media technical resources to help you
- We investigate all quality concerns to ensure our products perform to the highest standards

If the product does not perform as described on this datasheet, we will offer a refund or replacement. For full details of the Abpromise, please visit <https://www.abcam.com/abpromise> or contact our technical team.

Terms and conditions

- Guarantee only valid for products bought direct from Abcam or one of our authorized distributors