


Product datasheet

Anti-FXR2 antibody ab168852

★★★★★ [1 Abreviews](#) [2 Images](#)

Overview

Product name	Anti-FXR2 antibody
Description	Rabbit polyclonal to FXR2
Host species	Rabbit
Tested applications	Suitable for: WB, IP
Species reactivity	Reacts with: Human Predicted to work with: Rat, Rabbit, Horse, Cow, Dog, Pig, Chimpanzee, Rhesus monkey, Gorilla, Orangutan 
Immunogen	Synthetic peptide, corresponding to a region within amino acids 600-635 of Human FXR2 (NP_004851.2). Run BLAST with ExPASy Run BLAST with NCBI
Positive control	293T, HeLa and Jurkat whole cell lysates.
General notes	<p>The Life Science industry has been in the grips of a reproducibility crisis for a number of years. Abcam is leading the way in addressing this with our range of recombinant monoclonal antibodies and knockout edited cell lines for gold-standard validation. Please check that this product meets your needs before purchasing.</p> <p>If you have any questions, special requirements or concerns, please send us an inquiry and/or contact our Support team ahead of purchase. Recommended alternatives for this product can be found below, along with publications, customer reviews and Q&As</p>

Properties

Form	Liquid
Storage instructions	Store at +4°C short term (1-2 weeks). Aliquot and store at -20°C long term. Avoid repeated freeze / thaw cycles.
Storage buffer	pH: 7 Preservative: 0.09% Sodium azide Constituent: 99% Tris citrate/phosphate pH 7 to 8
Purity	Immunogen affinity purified
Purification notes	ab168852 was affinity purified using an epitope specific to FXR2 immobilized on solid support.

Clonality Polyclonal
Isotype IgG

Applications

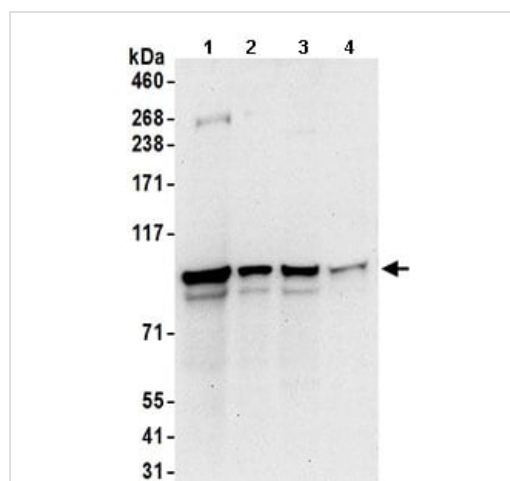
The Abpromise guarantee Our **Abpromise guarantee** covers the use of ab168852 in the following tested applications. The application notes include recommended starting dilutions; optimal dilutions/concentrations should be determined by the end user.

Application	Abreviews	Notes
WB	★★★★★ (1)	1/2000 - 1/10000. Predicted molecular weight: 74 kDa.
IP		Use at 2-10 µg/mg of lysate.

Target

Function RNA-binding protein.
Sequence similarities Belongs to the FMR1 family.
Contains 2 KH domains.
Cellular localization Cytoplasm.

Images



Western blot - Anti-FXR2 antibody (ab168852)

All lanes : Anti-FXR2 antibody (ab168852) at 0.1 µg/ml

Lane 1 : 293T whole cell lysate at 50 µg

Lane 2 : 293T whole cell lysate at 15 µg

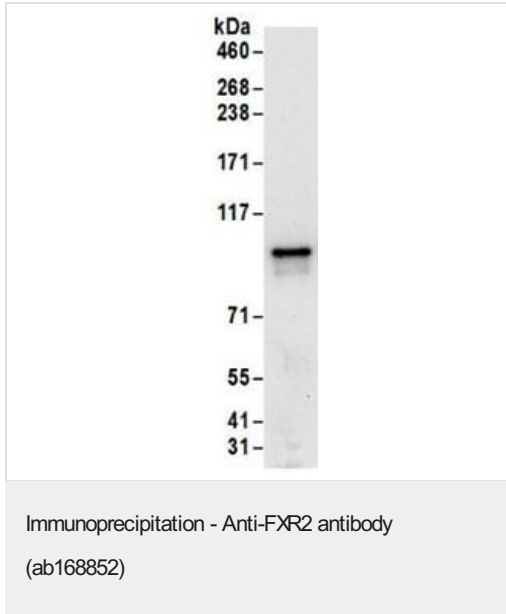
Lane 3 : HeLa whole cell lysate at 50 µg

Lane 4 : Jurkat whole cell lysate at 50 µg

Developed using the ECL technique.

Predicted band size: 74 kDa

Exposure time: 30 seconds



Detection of FXR2 in Immunoprecipitates of 293T whole cell lysate (1 mg for IP, 20% of IP loaded) using ab168852 at 6 µg/mg lysate for IP and at 1 µg/ml for subsequent Western blot detection. Detection: Chemiluminescence with an exposure time of 30 seconds

Please note: All products are "FOR RESEARCH USE ONLY. NOT FOR USE IN DIAGNOSTIC PROCEDURES"

Our Abpromise to you: Quality guaranteed and expert technical support

- Replacement or refund for products not performing as stated on the datasheet
- Valid for 12 months from date of delivery
- Response to your inquiry within 24 hours
- We provide support in Chinese, English, French, German, Japanese and Spanish
- Extensive multi-media technical resources to help you
- We investigate all quality concerns to ensure our products perform to the highest standards

If the product does not perform as described on this datasheet, we will offer a refund or replacement. For full details of the Abpromise, please visit <https://www.abcam.com/abpromise> or contact our technical team.

Terms and conditions

- Guarantee only valid for products bought direct from Abcam or one of our authorized distributors