

Product datasheet

Anti-G-CSF antibody ab9691

★★★★★ [6 Abreviews](#) [11 References](#) [2 Images](#)

Overview

Product name	Anti-G-CSF antibody
Description	Rabbit polyclonal to G-CSF
Host species	Rabbit
Tested applications	Suitable for: WB, Sandwich ELISA
Species reactivity	Reacts with: Human, Recombinant fragment
Immunogen	Recombinant fragment corresponding to Human G-CSF aa 1 to the C-terminus. Produced in E.coli. Isoform Short of G-CSF. Database link: P09919-2

 [Run BLAST with](#)

 [Run BLAST with](#)

General notes

Although some customers have been successful in IHC we no longer batch test in this application. For an IHC validated antibody please see [ab216607](#).

The Life Science industry has been in the grips of a reproducibility crisis for a number of years. Abcam is leading the way in addressing this with our range of recombinant monoclonal antibodies and knockout edited cell lines for gold-standard validation. Please check that this product meets your needs before purchasing.

If you have any questions, special requirements or concerns, please send us an inquiry and/or contact our Support team ahead of purchase. Recommended alternatives for this product can be found below, along with publications, customer reviews and Q&As

Properties

Form	Lyophilized:Reconstitute with 200µl of sterile water.
Storage instructions	Shipped at 4°C. Upon delivery aliquot and store at -20°C. Avoid repeated freeze / thaw cycles.
Storage buffer	No preservative, sterile filtered
Purity	Immunogen affinity purified
Clonality	Polyclonal
Isotype	IgG
Light chain type	unknown

Applications

The Abpromise guarantee

Our **Abpromise guarantee** covers the use of ab9691 in the following tested applications.

The application notes include recommended starting dilutions; optimal dilutions/concentrations should be determined by the end user.

Application	Abreviews	Notes
WB	★★★★★ (2)	Use at an assay dependent concentration. To detect hG-CSF by Western Blot analysis this antibody can be used at a concentration of 0.1 - 0.2 µg/ml. Used in conjunction with compatible secondary reagents the detection limit for recombinant hG-CSF is 1.5 - 3.0 ng/lane, under either reducing or non-reducing conditions.
Sandwich ELISA		Use a concentration of 0.5 - 2 µg/ml. This antigen affinity purified antibody, in conjunction with ab271256 as a detection antibody, allows the detection of at least 0.2 - 0.4 ng/well of recombinant hG-CSF

Target

Function

Granulocyte/macrophage colony-stimulating factors are cytokines that act in hematopoiesis by controlling the production, differentiation, and function of 2 related white cell populations of the blood, the granulocytes and the monocytes-macrophages. This CSF induces granulocytes.

Sequence similarities

Belongs to the IL-6 superfamily.

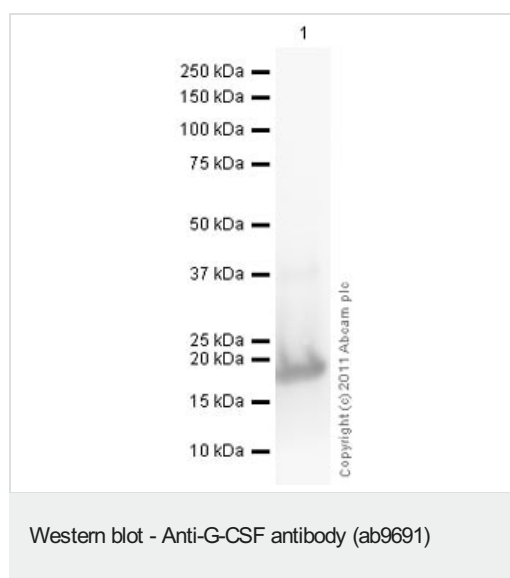
Post-translational modifications

O-glycan consists of Gal-GalNAc disaccharide which can be modified with up to two sialic acid residues (done in recombinantly expressed G-CSF from CHO cells).

Cellular localization

Secreted.

Images



Anti-G-CSF antibody (ab9691) at 1 µg/ml + Recombinant human G-CSF protein (**ab73371**) at 0.01 µg

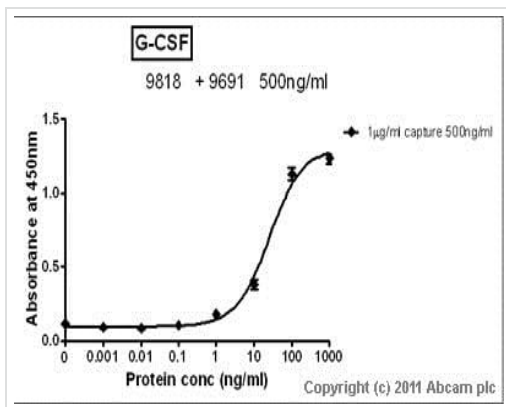
Secondary

Goat Anti-Rabbit IgG H&L (HRP) preadsorbed (**ab97080**) at 1/5000 dilution

Developed using the ECL technique.

Performed under reducing conditions.

Exposure time: 2 minutes



Sandwich ELISA - Anti-G-CSF antibody (ab9691)

Standard Curve for G-CSF (Analyte: **ab51298**) dilution range 1pg/ml to 1ug/ml using Capture Antibody Mouse monoclonal [5D7] to G-CSF (**ab9818**) at 1ug/ml and Detector Antibody Rabbit polyclonal to G-CSF (ab9691) at 0.5ug/ml

Please note: All products are "FOR RESEARCH USE ONLY. NOT FOR USE IN DIAGNOSTIC PROCEDURES"

Our Abpromise to you: Quality guaranteed and expert technical support

- Replacement or refund for products not performing as stated on the datasheet
- Valid for 12 months from date of delivery
- Response to your inquiry within 24 hours
- We provide support in Chinese, English, French, German, Japanese and Spanish
- Extensive multi-media technical resources to help you
- We investigate all quality concerns to ensure our products perform to the highest standards

If the product does not perform as described on this datasheet, we will offer a refund or replacement. For full details of the Abpromise, please visit <https://www.abcam.com/abpromise> or contact our technical team.

Terms and conditions

- Guarantee only valid for products bought direct from Abcam or one of our authorized distributors