

## Product datasheet

### Anti-G-CSF antibody [KT26] ab110652

[1 Image](#)

#### Overview

---

<b>Product name</b>	Anti-G-CSF antibody [KT26]
<b>Description</b>	Mouse monoclonal [KT26] to G-CSF
<b>Host species</b>	Mouse
<b>Tested applications</b>	<b>Suitable for:</b> Sandwich ELISA
<b>Species reactivity</b>	<b>Reacts with:</b> Human
<b>Immunogen</b>	Recombinant Human G-CSF
<b>General notes</b>	<p>The Life Science industry has been in the grips of a reproducibility crisis for a number of years. Abcam is leading the way in addressing this with our range of recombinant monoclonal antibodies and knockout edited cell lines for gold-standard validation. Please check that this product meets your needs before purchasing.</p> <p>If you have any questions, special requirements or concerns, please send us an inquiry and/or contact our Support team ahead of purchase. Recommended alternatives for this product can be found below, along with publications, customer reviews and Q&amp;As</p>

#### Properties

---

<b>Form</b>	Liquid
<b>Storage instructions</b>	Shipped at 4°C. Store at +4°C short term (1-2 weeks). Upon delivery aliquot. Store at -20°C or -80°C. Avoid freeze / thaw cycle.
<b>Storage buffer</b>	Preservative: 0.1% Sodium azide Constituent: PBS
<b>Purity</b>	Protein A purified
<b>Clonality</b>	Monoclonal
<b>Clone number</b>	KT26
<b>Isotype</b>	IgG2b

#### Applications

---

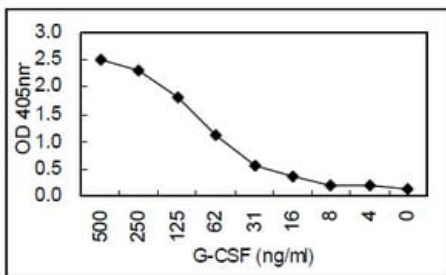
**The Abpromise guarantee** Our **Abpromise guarantee** covers the use of ab110652 in the following tested applications. The application notes include recommended starting dilutions; optimal dilutions/concentrations should be determined by the end user.

Application	Abreviews	Notes
Sandwich ELISA		Use a concentration of 5 µg/ml. as the dection antibody.

## Target

<b>Function</b>	Granulocyte/macrophage colony-stimulating factors are cytokines that act in hematopoiesis by controlling the production, differentiation, and function of 2 related white cell populations of the blood, the granulocytes and the monocytes-macrophages. This CSF induces granulocytes.
<b>Sequence similarities</b>	Belongs to the IL-6 superfamily.
<b>Post-translational modifications</b>	O-glycan consists of Gal-GalNAc disaccharide which can be modified with up to two sialic acid residues (done in recombinantly expressed G-CSF from CHO cells).
<b>Cellular localization</b>	Secreted.

## Images



Sandwich ELISA - Anti-G-CSF antibody [KT26]  
(ab110652)

Sandwich ELISA using a ab110652 coated plate and HRP conjugated **ab106679** as a detection antibody.

**Please note:** All products are "FOR RESEARCH USE ONLY. NOT FOR USE IN DIAGNOSTIC PROCEDURES"

## Our Abpromise to you: Quality guaranteed and expert technical support

- Replacement or refund for products not performing as stated on the datasheet
- Valid for 12 months from date of delivery
- Response to your inquiry within 24 hours
- We provide support in Chinese, English, French, German, Japanese and Spanish
- Extensive multi-media technical resources to help you
- We investigate all quality concerns to ensure our products perform to the highest standards

If the product does not perform as described on this datasheet, we will offer a refund or replacement. For full details of the Abpromise, please visit <https://www.abcam.com/abpromise> or contact our technical team.

## Terms and conditions

---

- Guarantee only valid for products bought direct from Abcam or one of our authorized distributors