


Product datasheet

Anti-G3BP2 antibody ab86135

[15 References](#) [3 Images](#)

Overview

Product name	Anti-G3BP2 antibody
Description	Rabbit polyclonal to G3BP2
Host species	Rabbit
Tested applications	Suitable for: ICC/IF, WB, IP
Species reactivity	Reacts with: Human Predicted to work with: Mouse, Orangutan 
Immunogen	Synthetic peptide corresponding to Human G3BP2 aa 250-350. Database link: Q9UN86
Positive control	ICC/IF: HeLa cells. WB: HeLa, MCF7, Jurkat, HepG2 and HEK293T whole cell lysate. IP: HEK293T whole cell lysate.
General notes	<p>The Life Science industry has been in the grips of a reproducibility crisis for a number of years. Abcam is leading the way in addressing this with our range of recombinant monoclonal antibodies and knockout edited cell lines for gold-standard validation. Please check that this product meets your needs before purchasing.</p> <p>If you have any questions, special requirements or concerns, please send us an inquiry and/or contact our Support team ahead of purchase. Recommended alternatives for this product can be found below, along with publications, customer reviews and Q&As</p>

Properties

Form	Liquid
Storage instructions	Shipped at 4°C. Upon delivery aliquot and store at -20°C. Avoid freeze / thaw cycles.
Storage buffer	pH: 7 Preservative: 0.09% Sodium azide Constituent: Tris citrate/phosphate
Purity	Immunogen affinity purified
Clonality	Polyclonal
Isotype	IgG

Applications

The Abpromise guarantee

Our **Abpromise guarantee** covers the use of ab86135 in the following tested applications.

The application notes include recommended starting dilutions; optimal dilutions/concentrations should be determined by the end user.

Application	Abreviews	Notes
ICC/IF		Use a concentration of 5 µg/ml.
WB		1/2000 - 1/10000. Predicted molecular weight: 54 kDa.
IP		Use at 2-5 µg/mg of lysate.

Target

Function

Probable scaffold protein that may be involved in mRNA transport.

Sequence similarities

Contains 1 NTF2 domain.

Contains 1 RRM (RNA recognition motif) domain.

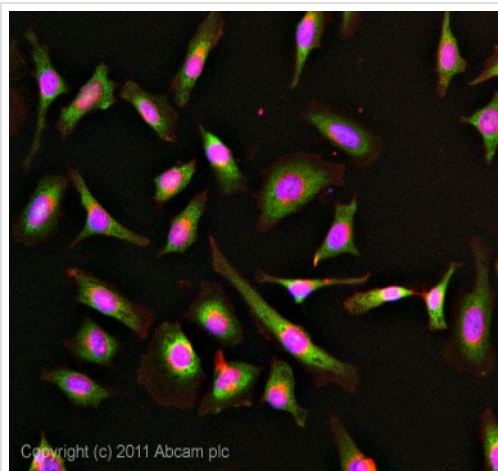
Post-translational modifications

Arg-457 and Arg-468 are dimethylated, probably to asymmetric dimethylarginine.

Cellular localization

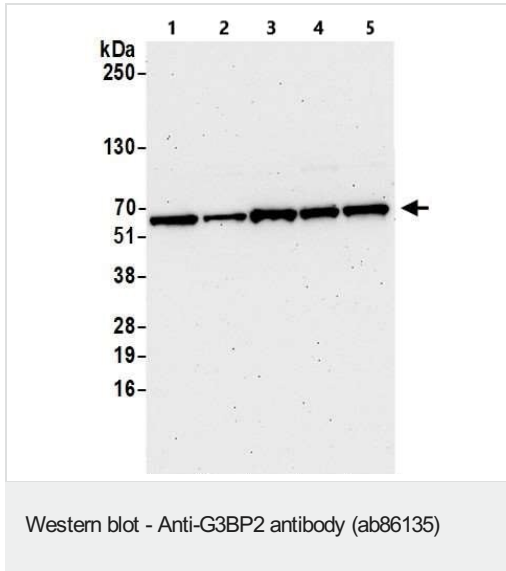
Cytoplasm.

Images



Immunocytochemistry/ Immunofluorescence - Anti-G3BP2 antibody (ab86135)

ICC/IF image of ab86135 stained HeLa cells. The cells were 4% formaldehyde fixed (10 min) and then incubated in 1%BSA / 10% normal goat serum / 0.3M glycine in 0.1% PBS-Tween for 1h to permeabilise the cells and block non-specific protein-protein interactions. The cells were then incubated with the antibody (ab86135, 5µg/ml) overnight at +4°C. The secondary antibody (green) was **ab96899**, DyLight® 488 goat anti-rabbit IgG (H+L) used at a 1/250 dilution for 1h. Alexa Fluor® 594 WGA was used to label plasma membranes (red) at a 1/200 dilution for 1h. DAPI was used to stain the cell nuclei (blue) at a concentration of 1.43µM.



All lanes : Anti-G3BP2 antibody (ab86135) at 0.04 µg/ml

Lane 1 : HeLa whole cell lysate

Lane 2 : MCF7 whole cell lysate

Lane 3 : Jurkat whole cell lysate

Lane 4 : HepG2 whole cell lysate

Lane 5 : HEK293T whole cell lysate

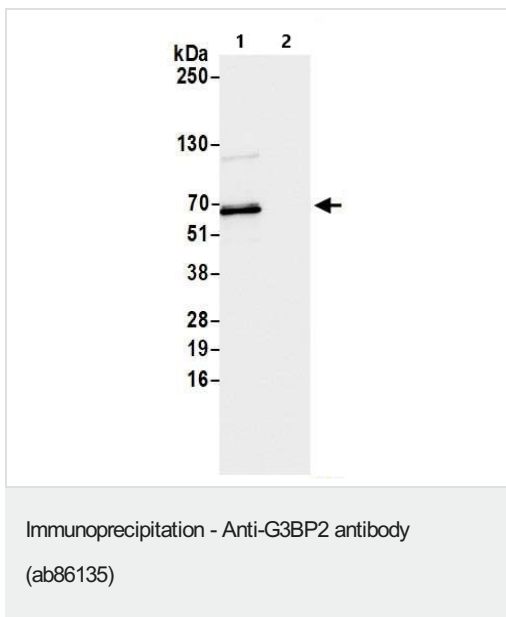
Lysates/proteins at 10 µg per lane.

Predicted band size: 54 kDa

Exposure time: 75 seconds

Detection: Chemiluminescence.

Lysates prepared using NETN lysis buffer.



G3BP2 was immunoprecipitated from 1 mg HEK293T whole cell lysate with ab86135 at 6 µg per reaction. Western blot was performed on the immunoprecipitate using ab86135 at 0.04 µg/mL.

Lysates prepared using NETN lysis buffer.

Lane 1 : ab86135 IP in HEK293T whole cell lysate.

Lane 2 : Control IgG in HEK293T whole cell lysate.

Detection: Chemiluminescence.

Exposure time: 1 second.

Please note: All products are "FOR RESEARCH USE ONLY. NOT FOR USE IN DIAGNOSTIC PROCEDURES"

Our Abpromise to you: Quality guaranteed and expert technical support

- Replacement or refund for products not performing as stated on the datasheet
- Valid for 12 months from date of delivery
- Response to your inquiry within 24 hours

- We provide support in Chinese, English, French, German, Japanese and Spanish
- Extensive multi-media technical resources to help you
- We investigate all quality concerns to ensure our products perform to the highest standards

If the product does not perform as described on this datasheet, we will offer a refund or replacement. For full details of the Abpromise, please visit <https://www.abcam.com/abpromise> or contact our technical team.

Terms and conditions

- Guarantee only valid for products bought direct from Abcam or one of our authorized distributors