


Product datasheet

Anti-GABA Transporter 1 / GAT 1 antibody ab426

★★★★☆ [3 Abreviews](#) [36 References](#) [1 Image](#)

Overview

Product name	Anti-GABA Transporter 1 / GAT 1 antibody
Description	Rabbit polyclonal to GABA Transporter 1 / GAT 1
Host species	Rabbit
Specificity	Reacts specifically with a 72 kDa protein.
Tested applications	Suitable for: WB
Species reactivity	Reacts with: Rat Predicted to work with: Human 
Immunogen	Synthetic peptide corresponding to Rat GABA Transporter 1/ GAT 1 (C terminal). 20 amino acids. Database link: P23978
Positive control	WB: Rat Hippocampus Tissue Lysate; Rat Spinal Cord Tissue Lysate; Rat Brain Tissue Lysate.
General notes	<p>The Life Science industry has been in the grips of a reproducibility crisis for a number of years. Abcam is leading the way in addressing this with our range of recombinant monoclonal antibodies and knockout edited cell lines for gold-standard validation. Please check that this product meets your needs before purchasing.</p> <p>If you have any questions, special requirements or concerns, please send us an inquiry and/or contact our Support team ahead of purchase. Recommended alternatives for this product can be found below, along with publications, customer reviews and Q&As</p>

Properties

Form	Liquid
Storage instructions	Shipped at 4°C. Store at +4°C short term (1-2 weeks). Upon delivery aliquot. Store at -20°C or -80°C. Avoid freeze / thaw cycle.
Storage buffer	Constituent: Whole serum
Purity	Whole antiserum
Clonality	Polyclonal
Isotype	IgG

Applications

Applications

The Abpromise guarantee Our **Abpromise guarantee** covers the use of ab426 in the following tested applications.

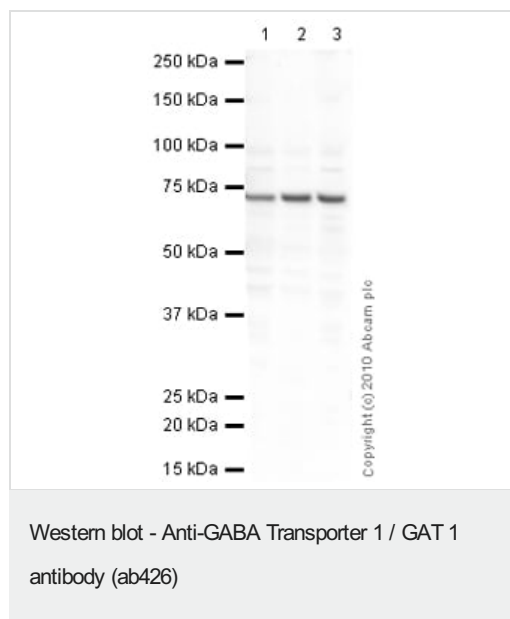
The application notes include recommended starting dilutions; optimal dilutions/concentrations should be determined by the end user.

Application	Abreviews	Notes
WB	★★★★★ (1)	1/500. Detects a band of approximately 74 kDa (predicted molecular weight: 67 kDa).

Target

Function	Terminates the action of GABA by its high affinity sodium-dependent reuptake into presynaptic terminals.
Sequence similarities	Belongs to the sodium:neurotransmitter symporter (SNF) (TC 2.A.22) family. SLC6A1 subfamily.
Domain	The PDZ domain-binding motif is involved in the interaction with MPP5.
Cellular localization	Cell membrane. Membrane. Localized at the plasma membrane and in a subset of intracellular vesicles. Localized at the presynaptic terminals of interneurons.

Images



All lanes : Anti-GABA Transporter 1 / GAT 1 antibody (ab426) at 1 µg/ml

Lane 1 : Rat Hippocampus Tissue Lysate

Lane 2 : Spinal Cord (Rat) Tissue Lysate

Lane 3 : Brain (Rat) Tissue Lysate

Lysates/proteins at 10 µg per lane.

Secondary

All lanes : Goat polyclonal Secondary Antibody to Rabbit IgG - H&L (HRP), pre-adsorbed at 1/3000 dilution

Developed using the ECL technique.

Performed under reducing conditions.

Predicted band size: 67 kDa

Observed band size: 74 kDa

Exposure time: 30 seconds

GABA Transporter 1/ GAT 1 contains a number of potential glycosylation sites (SwissProt) which may explain its migration at a higher molecular weight than predicted.

Please note: All products are "FOR RESEARCH USE ONLY. NOT FOR USE IN DIAGNOSTIC PROCEDURES"

Our Abpromise to you: Quality guaranteed and expert technical support

- Replacement or refund for products not performing as stated on the datasheet
- Valid for 12 months from date of delivery
- Response to your inquiry within 24 hours

- We provide support in Chinese, English, French, German, Japanese and Spanish
- Extensive multi-media technical resources to help you
- We investigate all quality concerns to ensure our products perform to the highest standards

If the product does not perform as described on this datasheet, we will offer a refund or replacement. For full details of the Abpromise, please visit <https://www.abcam.com/abpromise> or contact our technical team.

Terms and conditions

- Guarantee only valid for products bought direct from Abcam or one of our authorized distributors