

Product datasheet

Anti-GAL4 antibody ab154309

[2 Images](#)

Overview

Product name	Anti-GAL4 antibody
Description	Rabbit polyclonal to GAL4
Host species	Rabbit
Tested applications	Suitable for: WB, IHC-P
Species reactivity	Reacts with: Human
Immunogen	Recombinant fragment, corresponding to a region within amino acids 1-240 of Human GAL4 (Uniprot ID: P56470).
Positive control	GAL4 transfected 293T cell lysate; Human Gastric Carcinoma tissue.
General notes	<p>The Life Science industry has been in the grips of a reproducibility crisis for a number of years. Abcam is leading the way in addressing this with our range of recombinant monoclonal antibodies and knockout edited cell lines for gold-standard validation. Please check that this product meets your needs before purchasing.</p> <p>If you have any questions, special requirements or concerns, please send us an inquiry and/or contact our Support team ahead of purchase. Recommended alternatives for this product can be found below, along with publications, customer reviews and Q&As</p>

Properties

Form	Liquid
Storage instructions	Shipped at 4°C. Upon delivery aliquot. Store at -20°C or -80°C. Avoid freeze / thaw cycle.
Storage buffer	pH: 7.00 Preservative: 0.01% Thimerosal (merthiolate) Constituents: 1.21% Tris, 0.75% Glycine, 20% Glycerol (glycerin, glycerine)
Purity	Immunogen affinity purified
Clonality	Polyclonal
Isotype	IgG

Applications

The Abpromise guarantee Our **Abpromise guarantee** covers the use of ab154309 in the following tested applications.

The application notes include recommended starting dilutions; optimal dilutions/concentrations should be determined by the end user.

Application	Abreviews	Notes
WB		1/1000 - 1/10000. Predicted molecular weight: 36 kDa.
IHC-P		1/100 - 1/1000.

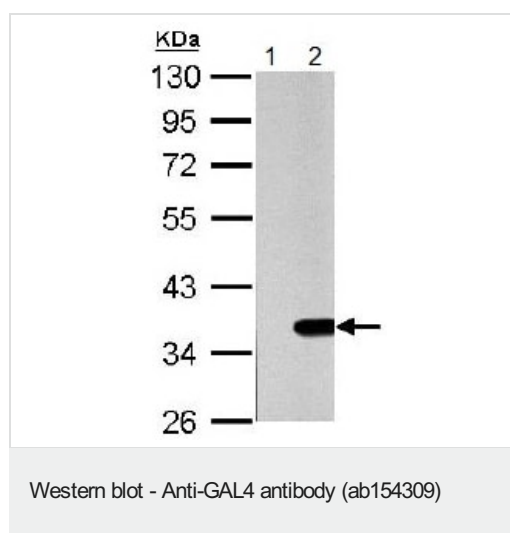
Target

Function Galectin that binds lactose and a related range of sugars. May be involved in the assembly of adherens junctions.

Sequence similarities Contains 2 galectin domains.

Domain Contains two homologous but distinct carbohydrate-binding domains.

Images



All lanes : Anti-GAL4 antibody (ab154309) at 1/5000 dilution

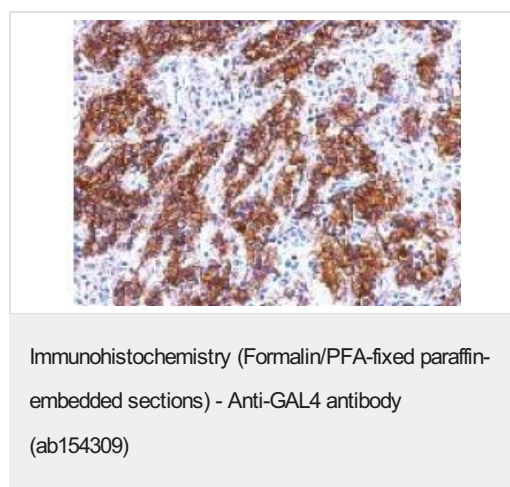
Lane 1 : Non-transfected 293T whole cell lysate

Lane 2 : GAL4-transfected 293T whole cell lysate

Lysates/proteins at 30 µg per lane.

Predicted band size: 36 kDa

10% SDS PAGE



Immunohistochemical analysis of paraffin-embedded Human Gastric Carcinoma tissue labeling GAL4 with ab154309 at 1/500 dilution.

Please note: All products are "FOR RESEARCH USE ONLY. NOT FOR USE IN DIAGNOSTIC PROCEDURES"

Our Abpromise to you: Quality guaranteed and expert technical support

- Replacement or refund for products not performing as stated on the datasheet
- Valid for 12 months from date of delivery
- Response to your inquiry within 24 hours

- We provide support in Chinese, English, French, German, Japanese and Spanish
- Extensive multi-media technical resources to help you
- We investigate all quality concerns to ensure our products perform to the highest standards

If the product does not perform as described on this datasheet, we will offer a refund or replacement. For full details of the Abpromise, please visit <https://www.abcam.com/abpromise> or contact our technical team.

Terms and conditions

- Guarantee only valid for products bought direct from Abcam or one of our authorized distributors