


## Product datasheet

### Anti-Galectin 3 antibody ab227249

★★★★★ [2 Abreviews](#) [6 Images](#)

#### Overview

<b>Product name</b>	Anti-Galectin 3 antibody
<b>Description</b>	Rabbit polyclonal to Galectin 3
<b>Host species</b>	Rabbit
<b>Tested applications</b>	<b>Suitable for:</b> IHC-P, WB, ICC/IF
<b>Species reactivity</b>	<b>Reacts with:</b> Rat, Human <b>Predicted to work with:</b> Rhesus monkey 
<b>Immunogen</b>	Recombinant fragment within Human Galectin 3 (internal sequence). The exact sequence is proprietary. Database link: <a href="#">P17931</a>
<b>Positive control</b>	WB: HeLa cell extract; A549, H1299, HCT 116 and MCF7 whole cell lysates; Galectin 3 transfected HEK-293T cell lysate; rat colon lysate. ICC/IF: MCF7 cells. IHC-P: HBL435 xenograft tissue.
<b>General notes</b>	<p>The Life Science industry has been in the grips of a reproducibility crisis for a number of years. Abcam is leading the way in addressing this with our range of recombinant monoclonal antibodies and knockout edited cell lines for gold-standard validation. Please check that this product meets your needs before purchasing.</p> <p>If you have any questions, special requirements or concerns, please send us an inquiry and/or contact our Support team ahead of purchase. Recommended alternatives for this product can be found below, along with publications, customer reviews and Q&amp;As</p>

#### Properties

<b>Form</b>	Liquid
<b>Storage instructions</b>	Shipped at 4°C. Store at +4°C short term (1-2 weeks). Upon delivery aliquot. Store at -20°C long term. Avoid freeze / thaw cycle.
<b>Storage buffer</b>	pH: 7.00 Preservative: 0.01% Thimerosal (merthiolate) Constituents: 79.99% PBS, 20% Glycerol (glycerin, glycerine)
<b>Purity</b>	Immunogen affinity purified
<b>Clonality</b>	Polyclonal
<b>Isotype</b>	IgG

## Applications

### The Abpromise guarantee

Our **Abpromise guarantee** covers the use of ab227249 in the following tested applications.

The application notes include recommended starting dilutions; optimal dilutions/concentrations should be determined by the end user.

Application	Abreviews	Notes
IHC-P	★★★★★ (2)	1/100 - 1/1000.
WB		1/5000 - 1/20000. Predicted molecular weight: 26 kDa.
ICC/IF		1/100 - 1/1000.

## Target

### Function

Galactose-specific lectin which binds IgE. May mediate with the alpha-3, beta-1 integrin the stimulation by CSPG4 of endothelial cells migration. Together with DMBT1, required for terminal differentiation of columnar epithelial cells during early embryogenesis.

### Tissue specificity

A major expression is found in the colonic epithelium. It is also abundant in the activated macrophages.

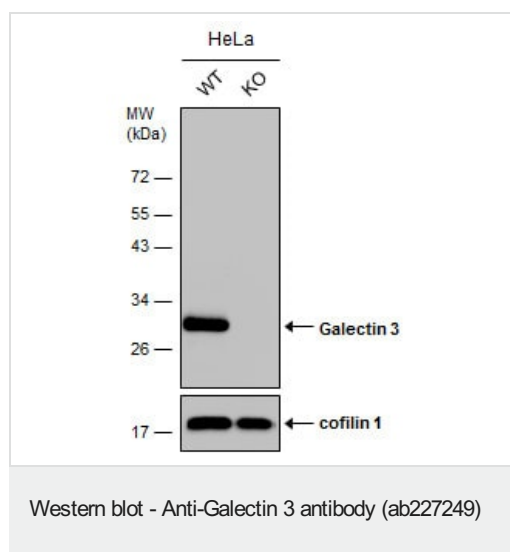
### Sequence similarities

Contains 1 galectin domain.

### Cellular localization

Nucleus. Cytoplasmic in adenomas and carcinomas. May be secreted by a non-classical secretory pathway and associate with the cell surface.

## Images



**All lanes :** Anti-Galectin 3 antibody (ab227249) at 1/10000 dilution

**Lane 1 :** WT HeLa cell extract

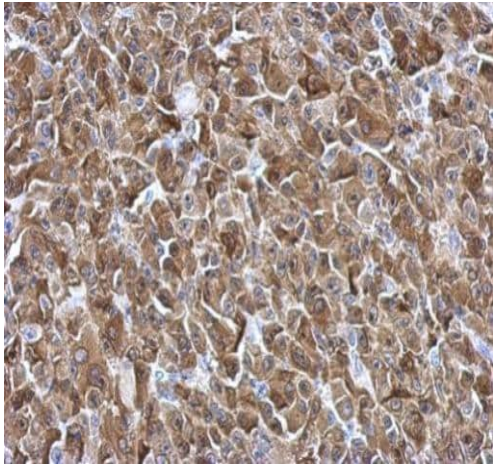
**Lane 2 :** Galectin 3 Knockout HeLa cell extracts

Lysates/proteins at 30 µg per lane.

### Secondary

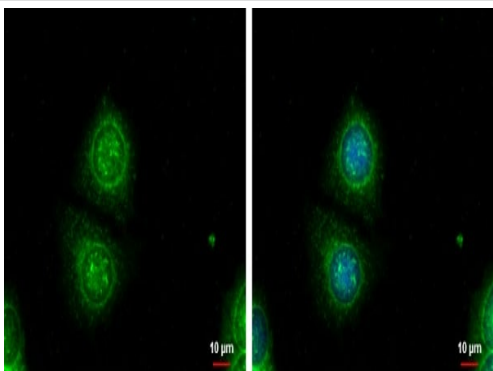
**All lanes :** HRP-conjugated anti-rabbit IgG

**Predicted band size:** 26 kDa



Immunohistochemistry (Formalin/PFA-fixed paraffin-embedded sections) - Anti-Galectin 3 antibody (ab227249)

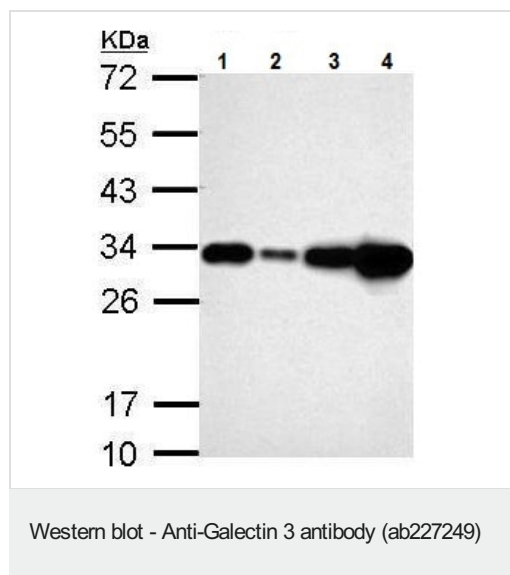
Paraffin-embedded HBL435 xenograft tissue stained for Galectin 3 using ab227249 at 1/500 dilution in immunohistochemical analysis.



Immunocytochemistry/ Immunofluorescence - Anti-Galectin 3 antibody (ab227249)

Ice-cold methanol-fixed MCF7 (human breast adenocarcinoma cell line) cells stained for Galectin 3 (green) using ab227249 at 1/1000 dilution in ICC/IF.

Blue: Hoechst 33342 staining.



**All lanes :** Anti-Galectin 3 antibody (ab227249) at 1/10000 dilution

**Lane 1 :** A549 (human lung carcinoma cell line) whole cell lysate

**Lane 2 :** H1299 whole cell lysate

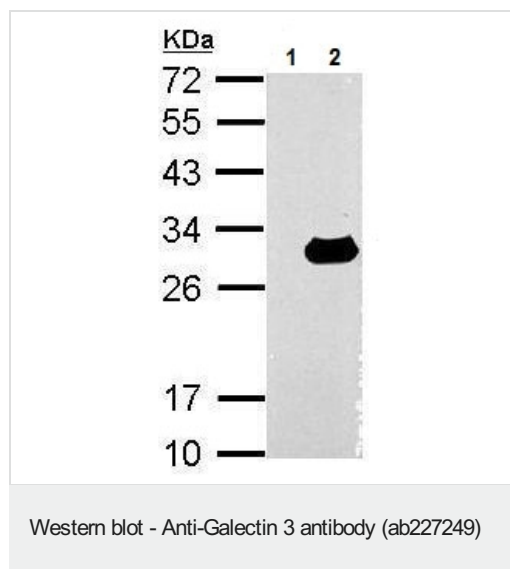
**Lane 3 :** HCT 116 (human colorectal carcinoma cell line) whole cell lysate

**Lane 4 :** MCF7 (human breast adenocarcinoma cell line) whole cell lysate

Lysates/proteins at 30 µg per lane.

**Predicted band size:** 26 kDa

12% SDS-PAGE gel.



**All lanes :** Anti-Galectin 3 antibody (ab227249) at 1/10000 dilution

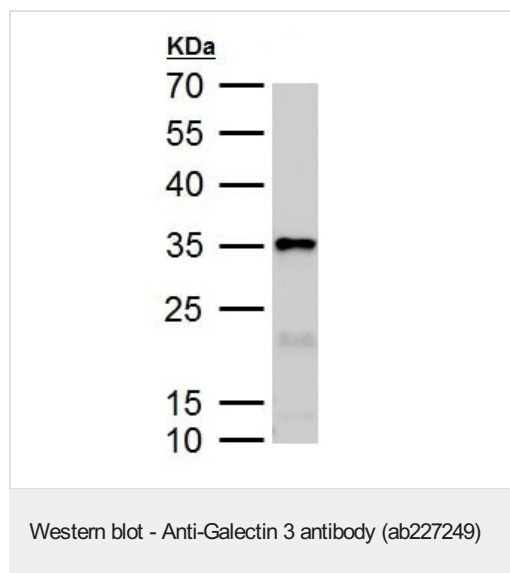
**Lane 1 :** Non-transfected HEK-293T (human epithelial cell line from embryonic kidney transformed with large T antigen) whole cell lysate

**Lane 2 :** Galectin 3 transfected HEK-293T (human epithelial cell line from embryonic kidney transformed with large T antigen) whole cell lysate

Lysates/proteins at 30 µg per lane.

**Predicted band size:** 26 kDa

12% SDS PAGE gel-



Anti-Galectin 3 antibody (ab227249) at 1/10000 dilution + Rat colon lysate at 50 µg

**Predicted band size:** 26 kDa

12 % SDS-PAGE gel.

**Please note:** All products are "FOR RESEARCH USE ONLY. NOT FOR USE IN DIAGNOSTIC PROCEDURES"

### Our Abpromise to you: Quality guaranteed and expert technical support

---

- Replacement or refund for products not performing as stated on the datasheet
- Valid for 12 months from date of delivery
- Response to your inquiry within 24 hours
- We provide support in Chinese, English, French, German, Japanese and Spanish
- Extensive multi-media technical resources to help you
- We investigate all quality concerns to ensure our products perform to the highest standards

If the product does not perform as described on this datasheet, we will offer a refund or replacement. For full details of the Abpromise, please visit <https://www.abcam.com/abpromise> or contact our technical team.

### Terms and conditions

---

- Guarantee only valid for products bought direct from Abcam or one of our authorized distributors