


## Product datasheet

# Anti-gamma Tubulin antibody [EPR13872] - Centrosome Marker ab180595

Recombinant RabMAb

★★★★★ [1 Abreviews](#) [1 References](#) [4 Images](#)

### Overview

<b>Product name</b>	Anti-gamma Tubulin antibody [EPR13872] - Centrosome Marker
<b>Description</b>	Rabbit monoclonal [EPR13872] to gamma Tubulin - Centrosome Marker
<b>Host species</b>	Rabbit
<b>Tested applications</b>	<b>Suitable for:</b> Flow Cyt (Intra), WB, IHC-P
<b>Species reactivity</b>	<b>Reacts with:</b> Human <b>Predicted to work with:</b> Mouse, Rat, Cow, Dog, Drosophila melanogaster, a wide range of other species 
<b>Immunogen</b>	Synthetic peptide. This information is proprietary to Abcam and/or its suppliers.
<b>Positive control</b>	Hela, Jurkat, A431 or 293 lysate, Human colon tissue or Jurkat cells.
<b>General notes</b>	<p>This product is a recombinant monoclonal antibody, which offers several advantages including:</p> <ul style="list-style-type: none"><li>- High batch-to-batch consistency and reproducibility</li><li>- Improved sensitivity and specificity</li><li>- Long-term security of supply</li><li>- Animal-free production</li></ul> <p>For more information <a href="#">see here</a>.</p> <p>Our RabMAb<sup>®</sup> technology is a patented hybridoma-based technology for making rabbit monoclonal antibodies. For details on our patents, please refer to <a href="#">RabMAb<sup>®</sup> patents</a>.</p>

### Properties

<b>Form</b>	Liquid
<b>Storage instructions</b>	Shipped at 4°C. Store at +4°C short term (1-2 weeks). Upon delivery aliquot. Store at -20°C long term. Avoid freeze / thaw cycle.
<b>Storage buffer</b>	pH: 7.20 Preservative: 0.01% Sodium azide Constituents: 50% Glycerol (glycerin, glycerine), 0.05% BSA, PBS
<b>Purity</b>	Protein A purified
<b>Clonality</b>	Monoclonal

Clone number                   EPR13872  
Isotype                            IgG

## Applications

**The Abpromise guarantee**           Our **Abpromise guarantee** covers the use of ab180595 in the following tested applications. The application notes include recommended starting dilutions; optimal dilutions/concentrations should be determined by the end user.

Application	Abreviews	Notes
Flow Cyt (Intra)		1/140. <b>ab172730</b> - Rabbit monoclonal IgG, is suitable for use as an isotype control with this antibody.
WB		1/1000 - 1/2000. Detects a band of approximately 48 kDa.
IHC-P		1/50 - 1/100. Perform heat mediated antigen retrieval with Tris/EDTA buffer pH 9.0 before commencing with IHC staining protocol. Heat up to 98 °C, below boiling, and then let cool for 10-20 min.

## Target

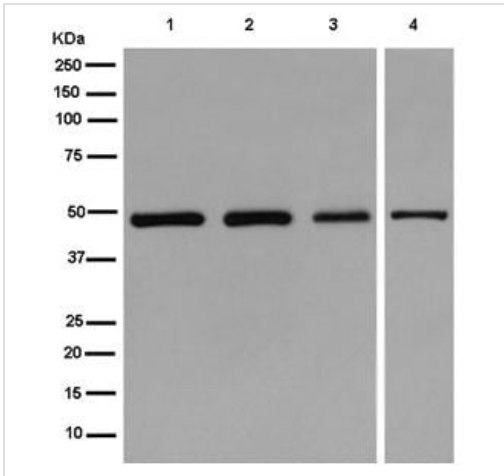
**Function**                                   Tubulin is the major constituent of microtubules. Gamma tubulin is found at microtubule organizing centers (MTOC) such as the spindle poles or the centrosome. Pericentriolar matrix component that regulates alpha/beta tubulin minus-end nucleation, centrosome duplication and spindle formation.

**Sequence similarities**                   Belongs to the tubulin family.

**Post-translational modifications**           Phosphorylation at Ser-131 by BRSK1 regulates centrosome duplication, possibly by mediating relocation of gamma-tubulin and its associated proteins from the cytoplasm to the centrosome.

**Cellular localization**                   Cytoplasm > cytoskeleton > centrosome.

## Images



Western blot - Anti-gamma Tubulin antibody [EPR13872] - Centrosome Marker (ab180595)

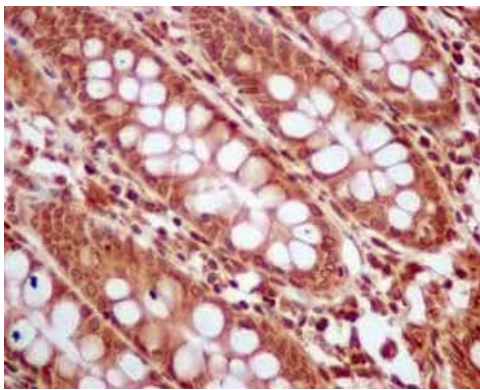
**All lanes** : Anti-gamma Tubulin antibody [EPR13872] - Centrosome Marker (ab180595) at 1/2000 dilution

- Lane 1** : HeLa cell lysate
- Lane 2** : Jurkat cell lysate
- Lane 3** : A431 cell lysate
- Lane 4** : 293 cell lysate

Lysates/proteins at 20 µg per lane.

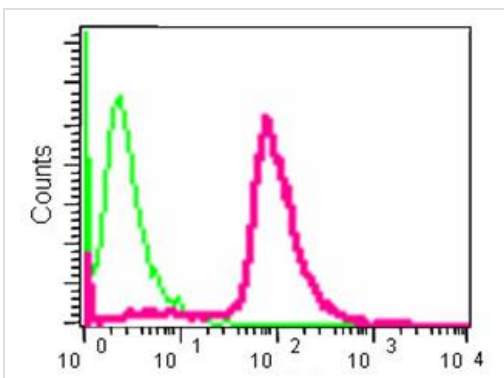
**Secondary**

**All lanes** : Goat Anti-Rabbit IgG (H+L) Peroxidase conjugated at 1/1000 dilution



Immunohistochemistry (Formalin/PFA-fixed paraffin-embedded sections) - Anti-gamma Tubulin antibody [EPR13872] - Centrosome Marker (ab180595)

Immunohistochemical analysis of paraffin embedded Human colon tissue labeling gamma Tubulin with ab180595 at a 1/100 dilution. Prediluted ImmunoHistoprobe HRP Polymer for Rabbit IgG secondary used. Counterstained with Hematoxylin. Perform heat mediated antigen retrieval with EDTA buffer pH 9 before commencing with IHC staining protocol.



Flow Cytometry (Intracellular) - Anti-gamma Tubulin antibody [EPR13872] - Centrosome Marker (ab180595)

Intracellular Flow Cytometry analysis of Jurkat cells using ab180595 at a 1/140 dilution (red) or a rabbit monoclonal IgG (negative) (green). Goat anti rabbit IgG (FITC) secondary used at a 1/150 dilution.

## Why choose a recombinant antibody?



**Research with confidence**  
Consistent and reproducible results



**Long-term and scalable supply**  
Recombinant technology



**Success from the first experiment**  
Confirmed specificity



**Ethical standards compliant**  
Animal-free production

Anti-gamma Tubulin antibody [EPR13872] -  
Centrosome Marker (ab180595)

**Please note:** All products are "FOR RESEARCH USE ONLY. NOT FOR USE IN DIAGNOSTIC PROCEDURES"

### Our Abpromise to you: Quality guaranteed and expert technical support

---

- Replacement or refund for products not performing as stated on the datasheet
- Valid for 12 months from date of delivery
- Response to your inquiry within 24 hours
- We provide support in Chinese, English, French, German, Japanese and Spanish
- Extensive multi-media technical resources to help you
- We investigate all quality concerns to ensure our products perform to the highest standards

If the product does not perform as described on this datasheet, we will offer a refund or replacement. For full details of the Abpromise, please visit <https://www.abcam.com/abpromise> or contact our technical team.

### Terms and conditions

---

- Guarantee only valid for products bought direct from Abcam or one of our authorized distributors