


Product datasheet

Anti-GC1q R antibody [EPR8870] ab134926

Recombinant RabMAb

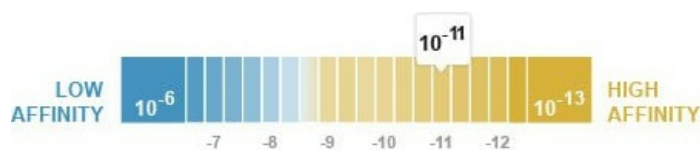
★★★★★ [1 Abreviews](#) [8 Images](#)

Overview

Product name	Anti-GC1q R antibody [EPR8870]
Description	Rabbit monoclonal [EPR8870] to GC1q R
Host species	Rabbit
Tested applications	Suitable for: WB, IHC-P Unsuitable for: Flow Cyt, ICC/IF or IP
Species reactivity	Reacts with: Human Predicted to work with: Mouse, Rat 
Immunogen	Synthetic peptide within Human GC1q R aa 150-250. The exact sequence is proprietary.
Positive control	HeLa, 293T, Jurkat and Raji cell lysates. Human tonsil and colon tissue.
General notes	This product is a recombinant monoclonal antibody, which offers several advantages including: <ul style="list-style-type: none"> - High batch-to-batch consistency and reproducibility - Improved sensitivity and specificity - Long-term security of supply - Animal-free production For more information see here . Our RabMAb [®] technology is a patented hybridoma-based technology for making rabbit monoclonal antibodies. For details on our patents, please refer to RabMAb[®] patents .

Properties

Form	Liquid
Storage instructions	Shipped at 4°C. Upon delivery aliquot and store at -20°C. Avoid freeze / thaw cycles.
Dissociation constant (K _D)	K _D = 6.00 x 10 ⁻¹¹ M



[Learn more about K_D](#)

Storage buffer	pH: 7.2
----------------	---------

	Preservative: 0.01% Sodium azide
	Constituents: 9% PBS, 40% Glycerol (glycerin, glycerine), 0.05% BSA, 50% Tissue culture supernatant
Purity	Protein A purified
Clonality	Monoclonal
Clone number	EPR8870
Isotype	IgG

Applications

The Abpromise guarantee Our **Abpromise guarantee** covers the use of ab134926 in the following tested applications. The application notes include recommended starting dilutions; optimal dilutions/concentrations should be determined by the end user.

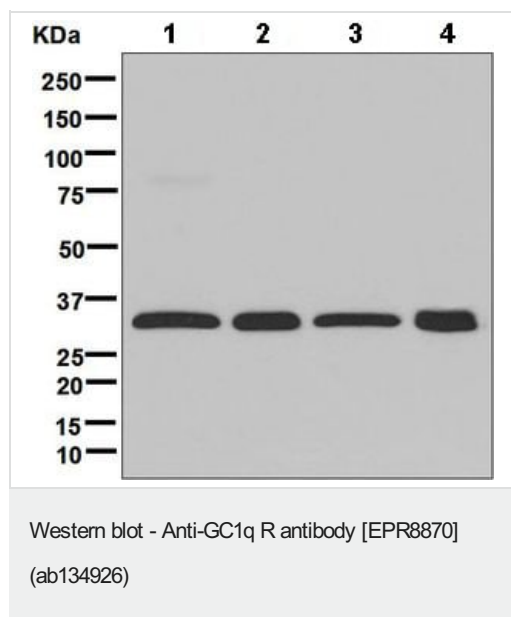
Application	Abreviews	Notes
WB	★★★★★ (1)	1/1000 - 1/10000. Predicted molecular weight: 31 kDa.
IHC-P		1/100 - 1/250. Perform heat mediated antigen retrieval before commencing with IHC staining protocol.

Application notes Is unsuitable for Flow Cyt, ICC/IF or IP.

Target

Function	Binds to the globular "heads" of C1q thus inhibiting C1 activation.
Sequence similarities	Belongs to the MAM33 family.
Cellular localization	Mitochondrion matrix. Nucleus. Might also be nuclear in some cell types.

Images



All lanes : Anti-GC1q R antibody [EPR8870] (ab134926) at 1/1000 dilution

Lane 1 : HeLa cell lysate

Lane 2 : 293T cell lysate

Lane 3 : Jurkat cell lysate

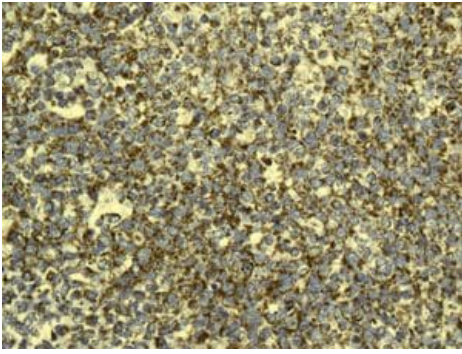
Lane 4 : Raji cell lysate

Lysates/proteins at 10 µg per lane.

Secondary

All lanes : Goat-anti-rabbit HRP at 1/2000 dilution

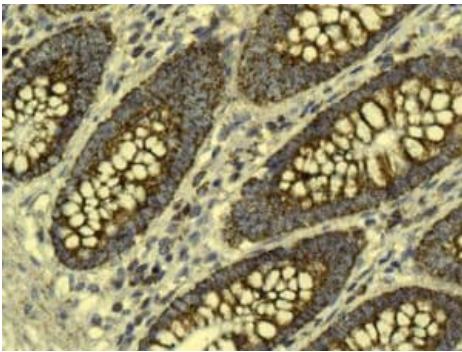
Predicted band size: 31 kDa



Immunohistochemistry (Formalin/PFA-fixed paraffin-embedded sections) - Anti-GC1q R antibody
[EPR8870] (ab134926)

Immunohistochemical analysis of paraffin-embedded Human tonsil tissue labelling GC1q R with ab134926 at 1/100 dilution.

Perform heat mediated antigen retrieval before commencing with IHC staining protocol.



Immunohistochemistry (Formalin/PFA-fixed paraffin-embedded sections) - Anti-GC1q R antibody
[EPR8870] (ab134926)

Immunohistochemical analysis of paraffin-embedded Human colon tissue labelling GC1q R with ab134926 at 1/100 dilution.

Perform heat mediated antigen retrieval before commencing with IHC staining protocol.

Immunohistochemistry (Formalin/PFA-fixed paraffin-embedded sections) - Anti-GC1q R antibody
[EPR8870] (ab134926)

Immunohistochemical analysis using ab134926 showing positive staining in Normal human breast tissue.

Perform heat mediated antigen retrieval before commencing with IHC staining protocol.

Immunohistochemistry (Formalin/PFA-fixed paraffin-embedded sections) - Anti-GC1q R antibody
[EPR8870] (ab134926)

Immunohistochemical analysis using ab134926 showing positive staining in Normal human uterus tissue.

Perform heat mediated antigen retrieval before commencing with IHC staining protocol.

Immunohistochemistry (Formalin/PFA-fixed paraffin-embedded sections) - Anti-GC1q R antibody [EPR8870] (ab134926)

Immunohistochemical analysis using ab134926 showing positive staining in Normal human ovary tissue.

Perform heat mediated antigen retrieval before commencing with IHC staining protocol.

OL-RD Scanning - Anti-GC1q R antibody [EPR8870] (ab134926)

Equilibrium disassociation constant (K_D)

Learn more about K_D

[Click here to learn more about \$K_D\$](#)

Why choose a recombinant antibody?



Research with confidence
Consistent and reproducible results



Long-term and scalable supply
Recombinant technology



Success from the first experiment
Confirmed specificity



Ethical standards compliant
Animal-free production

Anti-GC1q R antibody [EPR8870] (ab134926)

Please note: All products are "FOR RESEARCH USE ONLY. NOT FOR USE IN DIAGNOSTIC PROCEDURES"

Our Abpromise to you: Quality guaranteed and expert technical support

- Replacement or refund for products not performing as stated on the datasheet
- Valid for 12 months from date of delivery
- Response to your inquiry within 24 hours
- We provide support in Chinese, English, French, German, Japanese and Spanish
- Extensive multi-media technical resources to help you
- We investigate all quality concerns to ensure our products perform to the highest standards

If the product does not perform as described on this datasheet, we will offer a refund or replacement. For full details of the Abpromise, please visit <https://www.abcam.com/abpromise> or contact our technical team.

Terms and conditions

- Guarantee only valid for products bought direct from Abcam or one of our authorized distributors