

## Product datasheet

# Anti-GC1q R antibody [EPR8871] ab131284

Recombinant RabMAb

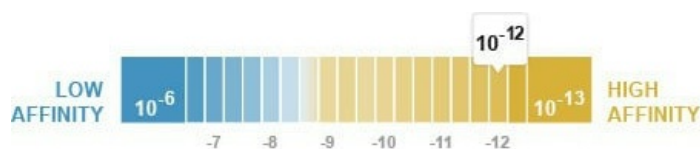
[7 References](#) [9 Images](#)

### Overview

<b>Product name</b>	Anti-GC1q R antibody [EPR8871]
<b>Description</b>	Rabbit monoclonal [EPR8871] to GC1q R
<b>Host species</b>	Rabbit
<b>Tested applications</b>	<b>Suitable for:</b> WB, IHC-P <b>Unsuitable for:</b> Flow Cyt, ICC/IF or IP
<b>Species reactivity</b>	<b>Reacts with:</b> Mouse, Rat, Human
<b>Immunogen</b>	Synthetic peptide within Human GC1q R aa 200-300. The exact sequence is proprietary. Database link: <a href="#">Q07021</a>
<b>Positive control</b>	WB: HeLa, 293T, Jurkat, and Raji cell lysates. Human, mouse and rat heart tissue lysates. IHC-P: Human kidney tissue and Human tonsil tissue.
<b>General notes</b>	This product is a recombinant monoclonal antibody, which offers several advantages including: <ul style="list-style-type: none"> <li>- High batch-to-batch consistency and reproducibility</li> <li>- Improved sensitivity and specificity</li> <li>- Long-term security of supply</li> <li>- Animal-free production</li> </ul> For more information <a href="#">see here</a> . Our RabMAb <sup>®</sup> technology is a patented hybridoma-based technology for making rabbit monoclonal antibodies. For details on our patents, please refer to <a href="#">RabMAb<sup>®</sup> patents</a> .

### Properties

<b>Form</b>	Liquid
<b>Storage instructions</b>	Shipped at 4°C. Store at +4°C short term (1-2 weeks). Upon delivery aliquot. Store at -20°C. Stable for 12 months at -20°C.
<b>Dissociation constant (K<sub>D</sub>)</b>	K <sub>D</sub> = 4.00 x 10 <sup>-12</sup> M



[Learn more about K<sub>D</sub>](#)

<b>Storage buffer</b>	pH: 7.20 Preservative: 0.01% Sodium azide Constituents: PBS, 40% Glycerol (glycerin, glycerine), 0.05% BSA
<b>Purity</b>	Protein A purified
<b>Clonality</b>	Monoclonal
<b>Clone number</b>	EPR8871
<b>Isotype</b>	IgG

## Applications

**The Abpromise guarantee** Our **Abpromise guarantee** covers the use of ab131284 in the following tested applications. The application notes include recommended starting dilutions; optimal dilutions/concentrations should be determined by the end user.

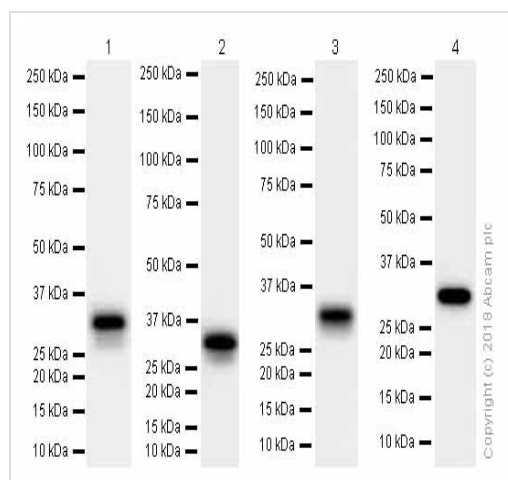
Application	Abreviews	Notes
<b>WB</b>		1/1000 - 1/10000. Predicted molecular weight: 31 kDa.
<b>IHC-P</b>		1/100 - 1/250. Perform heat mediated antigen retrieval with citrate buffer pH 6 before commencing with IHC staining protocol.

**Application notes** Is unsuitable for Flow Cyt, ICC/IF or IP.

## Target

**Function** Binds to the globular "heads" of C1q thus inhibiting C1 activation.  
**Sequence similarities** Belongs to the MAM33 family.  
**Cellular localization** Mitochondrion matrix. Nucleus. Might also be nuclear in some cell types.

## Images



Western blot - Anti-GC1q R antibody [EPR8871] (ab131284)

**All lanes** : Anti-GC1q R antibody [EPR8871] (ab131284) at 0.01 µg/ml (purified)

**Lane 1** : HeLa (Human cervix adenocarcinoma epithelial cell) whole cell lysates

**Lane 2** : Human heart lysates

**Lane 3** : Mouse heart lysates

**Lane 4** : Rat heart lysates

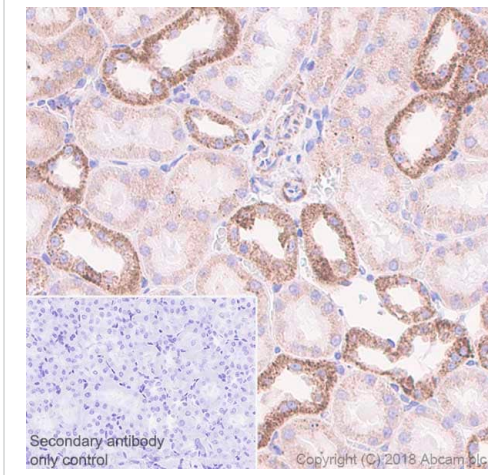
Lysates/proteins at 15 µg per lane.

### Secondary

**All lanes** : Goat Anti-Rabbit IgG H&L (HRP) (**ab97051**) at 1/20000 dilution

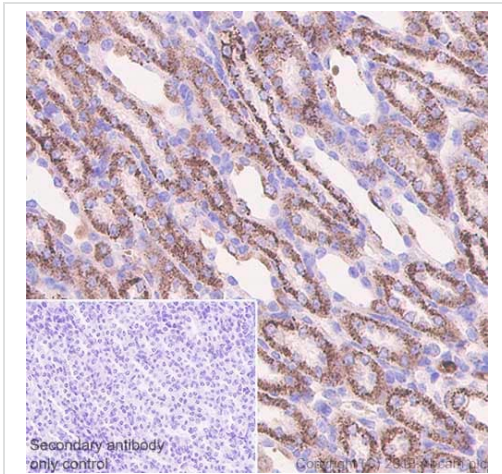
**Predicted band size:** 31 kDa

Blocking and diluting buffer: 5% NFDm/TBST



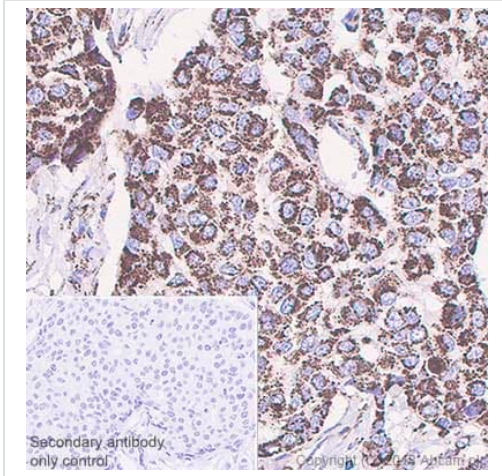
Immunohistochemistry (Formalin/PFA-fixed paraffin-embedded sections) analysis of Rat kidney tissue sections labeling GC1q R with Purified ab131284 at 1:250 dilution (0.43  $\mu\text{g/ml}$ ). Heat mediated antigen retrieval was performed using Citrate buffer (pH 6.0). ImmunoHistoProbe one step HRP Polymer (ready to use) was used as the secondary antibody. Negative control: PBS instead of the primary antibody. Hematoxylin was used as a counterstain.

Immunohistochemistry (Formalin/PFA-fixed paraffin-embedded sections) - Anti-GC1q R antibody [EPR8871] (ab131284)



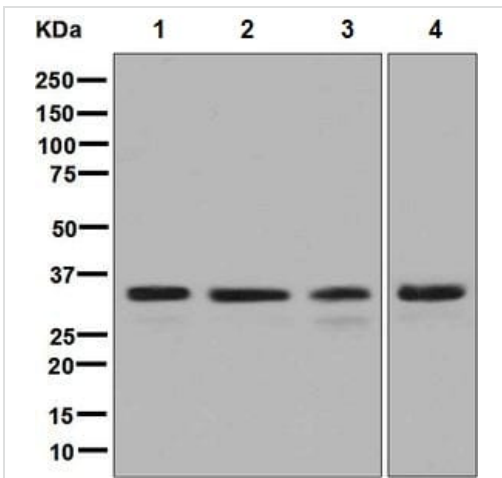
Immunohistochemistry (Formalin/PFA-fixed paraffin-embedded sections) analysis of Mouse kidney tissue sections labeling GC1q R with Purified ab131284 at 1:250 dilution (0.43  $\mu\text{g/ml}$ ). Heat mediated antigen retrieval was performed using Citrate buffer (pH 6.0). ImmunoHistoProbe one step HRP Polymer (ready to use) was used as the secondary antibody. Negative control: PBS instead of the primary antibody. Hematoxylin was used as a counterstain.

Immunohistochemistry (Formalin/PFA-fixed paraffin-embedded sections) - Anti-GC1q R antibody [EPR8871] (ab131284)



Immunohistochemistry (Formalin/PFA-fixed paraffin-embedded sections) - Anti-GC1q R antibody [EPR8871] (ab131284)

Immunohistochemistry (Formalin/PFA-fixed paraffin-embedded sections) analysis of human breast cancer tissue sections labeling GC1q R with Purified ab131284 at 1:250 dilution (0.43 µg/ml). Heat mediated antigen retrieval was performed using Citrate buffer (pH 6.0). ImmunoHistoProbe one step HRP Polymer (ready to use) was used as the secondary antibody. Negative control: PBS instead of the primary antibody. Hematoxylin was used as a counterstain.



Western blot - Anti-GC1q R antibody [EPR8871] (ab131284)

**All lanes** : Anti-GC1q R antibody [EPR8871] (ab131284) at 1/1000 dilution (unpurified)

**Lane 1** : HeLa cell lysate

**Lane 2** : 293T cell lysate

**Lane 3** : Jurkat cell lysate

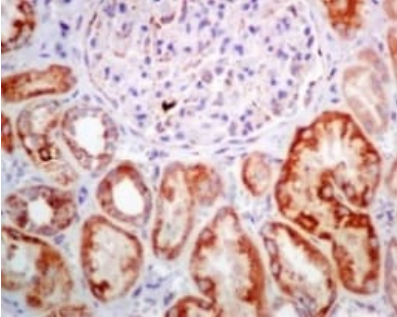
**Lane 4** : Raji cell lysate

Lysates/proteins at 10 µg per lane.

**Secondary**

**All lanes** : HRP labelled goat anti-rabbit at 1/2000 dilution

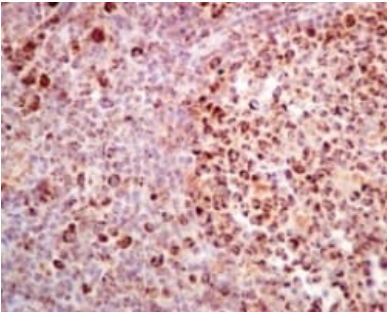
**Predicted band size:** 31 kDa



Immunohistochemistry (Formalin/PFA-fixed paraffin-embedded sections) - Anti-GC1q R antibody [EPR8871] (ab131284)

Immunohistochemical analysis of paraffin-embedded human kidney tissue labelled with unpurified ab131284 at 1/100 dilution.

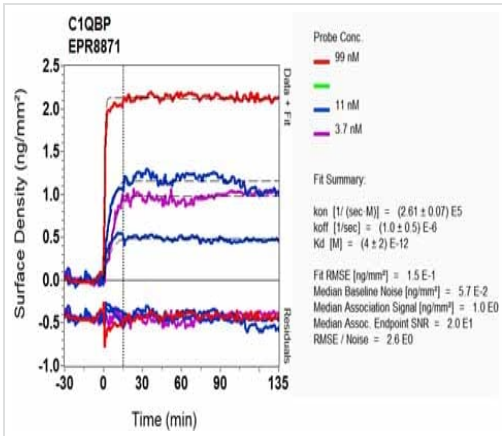
Perform heat mediated antigen retrieval with citrate buffer pH 6 before commencing with IHC staining protocol.



Immunohistochemistry (Formalin/PFA-fixed paraffin-embedded sections) - Anti-GC1q R antibody [EPR8871] (ab131284)

Immunohistochemical analysis of paraffin-embedded human tonsil tissue labelled with unpurified ab131284 at 1/100 dilution.

Perform heat mediated antigen retrieval with citrate buffer pH 6 before commencing with IHC staining protocol.



OI-RD Scanning - Anti-GC1q R antibody [EPR8871]  
(ab131284)

Equilibrium disassociation constant ( $K_D$ )

Learn more about  $K_D$

[Click here to learn more about  \$K\_D\$](#)

Why choose a recombinant antibody?

**Research with confidence**  
Consistent and reproducible results

**Long-term and scalable supply**  
Recombinant technology

**Success from the first experiment**  
Confirmed specificity

**Ethical standards compliant**  
Animal-free production

Anti-GC1q R antibody [EPR8871] (ab131284)

**Please note:** All products are "FOR RESEARCH USE ONLY. NOT FOR USE IN DIAGNOSTIC PROCEDURES"

### Our Abpromise to you: Quality guaranteed and expert technical support

- Replacement or refund for products not performing as stated on the datasheet
- Valid for 12 months from date of delivery
- Response to your inquiry within 24 hours
- We provide support in Chinese, English, French, German, Japanese and Spanish
- Extensive multi-media technical resources to help you
- We investigate all quality concerns to ensure our products perform to the highest standards

If the product does not perform as described on this datasheet, we will offer a refund or replacement. For full details of the Abpromise, please visit <https://www.abcam.com/abpromise> or contact our technical team.

### Terms and conditions

- Guarantee only valid for products bought direct from Abcam or one of our authorized distributors