


Product datasheet

Anti-GCAP2 antibody [EPR14571] ab184958

Recombinant RabMAb

3 Images

Overview

Product name	Anti-GCAP2 antibody [EPR14571]
Description	Rabbit monoclonal [EPR14571] to GCAP2
Host species	Rabbit
Tested applications	Suitable for: WB
Species reactivity	Reacts with: Mouse, Rat Predicted to work with: Human 
Immunogen	Synthetic peptide. This information is proprietary to Abcam and/or its suppliers.
Positive control	Mouse and rat eyeball lysates
General notes	<p>This product is a recombinant monoclonal antibody, which offers several advantages including:</p> <ul style="list-style-type: none"> - High batch-to-batch consistency and reproducibility - Improved sensitivity and specificity - Long-term security of supply - Animal-free production <p>For more information see here.</p> <p>Our RabMAb[®] technology is a patented hybridoma-based technology for making rabbit monoclonal antibodies. For details on our patents, please refer to RabMAb[®] patents.</p>

Properties

Form	Liquid
Storage instructions	Shipped at 4°C. Store at +4°C short term (1-2 weeks). Upon delivery aliquot. Store at -20°C long term. Avoid freeze / thaw cycle.
Storage buffer	pH: 7.2 Preservative: 0.01% Sodium azide Constituents: 59% PBS, 40% Glycerol (glycerin, glycerine), 0.05% BSA
Purity	Protein A purified
Clonality	Monoclonal
Clone number	EPR14571
Isotype	IgG

Applications

The Abpromise guarantee

Our **Abpromise guarantee** covers the use of ab184958 in the following tested applications.

The application notes include recommended starting dilutions; optimal dilutions/concentrations should be determined by the end user.

Application	Abreviews	Notes
WB		1/1000 - 1/2000. Detects a band of approximately 23 kDa (predicted molecular weight: 23 kDa).

Target

Function

Stimulates guanylyl cyclase 1 (GC1) and GC2 when free calcium ions concentration is low, and GC1 and GC2 when free calcium ions concentration is elevated. This Ca(2+)-sensitive regulation of GC is a key event in recovery of the dark state of rod photoreceptors following light exposure.

Tissue specificity

Retina. Cones and rod.

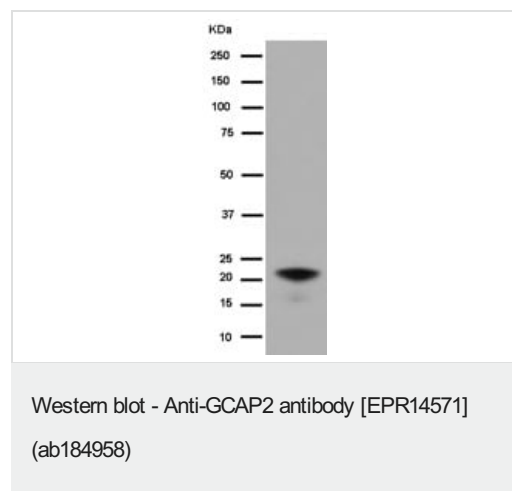
Sequence similarities

Contains 4 EF-hand domains.

Cellular localization

Cell membrane. Membranes of outer segment.

Images

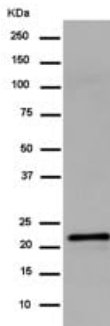


Anti-GCAP2 antibody [EPR14571] (ab184958) at 1/2000 dilution + Rat eyeball lysate at 20 µg

Secondary

Goat Anti-Rabbit IgG, (H+L), Peroxidase conjugated at 1/1000 dilution

Predicted band size: 23 kDa



Western blot - Anti-GCAP2 antibody [EPR14571]
(ab184958)

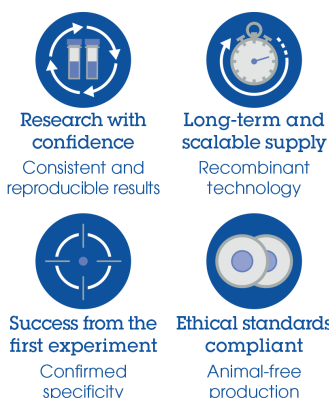
Anti-GCAP2 antibody [EPR14571] (ab184958) at 1/1000 dilution +
Mouse eyeball lysate at 10 µg

Secondary

Goat Anti-Rabbit IgG, (H+L), Peroxidase conjugated at 1/1000
dilution

Predicted band size: 23 kDa

Why choose a recombinant antibody?



Anti-GCAP2 antibody [EPR14571] (ab184958)

Please note: All products are "FOR RESEARCH USE ONLY. NOT FOR USE IN DIAGNOSTIC PROCEDURES"

Our Abpromise to you: Quality guaranteed and expert technical support

- Replacement or refund for products not performing as stated on the datasheet
- Valid for 12 months from date of delivery
- Response to your inquiry within 24 hours
- We provide support in Chinese, English, French, German, Japanese and Spanish
- Extensive multi-media technical resources to help you
- We investigate all quality concerns to ensure our products perform to the highest standards

If the product does not perform as described on this datasheet, we will offer a refund or replacement. For full details of the Abpromise, please visit <https://www.abcam.com/abpromise> or contact our technical team.

Terms and conditions

- Guarantee only valid for products bought direct from Abcam or one of our authorized distributors