

Product datasheet

Anti-GCDFP 15 antibody [D6] ab86721

[2 References](#) [1 Image](#)

Overview

Product name	Anti-GCDFP 15 antibody [D6]
Description	Mouse monoclonal [D6] to GCDFP 15
Host species	Mouse
Tested applications	Suitable for: IHC-P
Species reactivity	Reacts with: Human
Immunogen	Full length protein (Human)
Positive control	Breast Cancer.
General notes	<p>The Life Science industry has been in the grips of a reproducibility crisis for a number of years. Abcam is leading the way in addressing this with our range of recombinant monoclonal antibodies and knockout edited cell lines for gold-standard validation. Please check that this product meets your needs before purchasing.</p> <p>If you have any questions, special requirements or concerns, please send us an inquiry and/or contact our Support team ahead of purchase. Recommended alternatives for this product can be found below, along with publications, customer reviews and Q&As</p>

Properties

Form	Liquid
Storage instructions	Shipped at 4°C. Store at +4°C short term (1-2 weeks). Store at -20°C or -80°C. Avoid freeze / thaw cycle.
Storage buffer	Preservative: 0.1% Sodium azide Constituent: Carrier protein
Purity	Protein A purified
Clonality	Monoclonal
Clone number	D6
Isotype	IgG2a

Applications

The **Abpromise guarantee** Our **Abpromise guarantee** covers the use of ab86721 in the following tested applications.

The application notes include recommended starting dilutions; optimal dilutions/concentrations should be determined by the end user.

Application	Abreviews	Notes
IHC-P		

Application notes

IHC-P: 1/50 - 1/100. Perform enzymatic antigen retrieval before commencing with IHC staining protocol using Pepsin enzyme for 5 minutes at 37°C or for 15 minutes at RT.

Not yet tested in other applications.

Optimal dilutions/concentrations should be determined by the end user.

Target

Tissue specificity

Expressed in pathological conditions of the mammary gland and in several exocrine tissues, such as the lacrimal, salivary, and sweat glands.

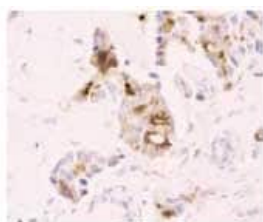
Sequence similarities

Belongs to the PIP family.

Cellular localization

Secreted.

Images



ab86721, at 1/50 dilution, staining GCDFP 15 in formalin fixed, paraffin-embedded human breast cancer sections by Immunohistochemistry.

Immunohistochemistry (Formalin/PFA-fixed paraffin-embedded sections) - Anti-GCDFP 15 antibody [D6] (ab86721)

Please note: All products are "FOR RESEARCH USE ONLY. NOT FOR USE IN DIAGNOSTIC PROCEDURES"

Our Abpromise to you: Quality guaranteed and expert technical support

- Replacement or refund for products not performing as stated on the datasheet
- Valid for 12 months from date of delivery
- Response to your inquiry within 24 hours
- We provide support in Chinese, English, French, German, Japanese and Spanish
- Extensive multi-media technical resources to help you
- We investigate all quality concerns to ensure our products perform to the highest standards

If the product does not perform as described on this datasheet, we will offer a refund or replacement. For full details of the Abpromise,

please visit <https://www.abcam.com/abpromise> or contact our technical team.

Terms and conditions

- Guarantee only valid for products bought direct from Abcam or one of our authorized distributors