

Product datasheet

Anti-GCDFP 15 antibody [EP1582Y] ab62363

Recombinant RabMAb

★☆☆☆☆ [1 Abreviews](#) [6 References](#) [9 Images](#)

Overview

Product name	Anti-GCDFP 15 antibody [EP1582Y]
Description	Rabbit monoclonal [EP1582Y] to GCDFP 15
Host species	Rabbit
Tested applications	Suitable for: Flow Cyt (Intra), WB, IHC-P, ICC/IF Unsuitable for: IP
Species reactivity	Reacts with: Human
Immunogen	Synthetic peptide. This information is proprietary to Abcam and/or its suppliers.
Positive control	T47D cell lysate, human breast carcinoma tissue
General notes	<p>This product is a recombinant monoclonal antibody, which offers several advantages including:</p> <ul style="list-style-type: none">- High batch-to-batch consistency and reproducibility- Improved sensitivity and specificity- Long-term security of supply- Animal-free production <p>For more information see here.</p> <p>Our RabMAb[®] technology is a patented hybridoma-based technology for making rabbit monoclonal antibodies. For details on our patents, please refer to RabMAb[®] patents.</p> <p>Mouse, Rat: We have preliminary internal testing data to indicate this antibody may not react with these species. Please contact us for more information.</p>

Properties

Form	Liquid
Storage instructions	Shipped at 4°C. Upon delivery aliquot and store at -20°C. Avoid freeze / thaw cycles.
Storage buffer	pH: 7.20 Preservative: 0.01% Sodium azide Constituents: 9% PBS, 40% Glycerol (glycerin, glycerine), 0.05% BSA, 50% Tissue culture supernatant
Purity	Tissue culture supernatant
Clonality	Monoclonal

Clone number EP1582Y
Isotype IgG

Applications

The Abpromise guarantee Our **Abpromise guarantee** covers the use of ab62363 in the following tested applications. The application notes include recommended starting dilutions; optimal dilutions/concentrations should be determined by the end user.

Application	Abreviews	Notes
Flow Cyt (Intra)		1/20. ab172730 - Rabbit monoclonal IgG, is suitable for use as an isotype control with this antibody.
WB		1/1000 - 1/2000. Predicted molecular weight: 17 kDa.
IHC-P		1/100 - 1/250.
ICC/IF	★☆☆☆☆ (1)	1/50 - 1/100.

Application notes Is unsuitable for IP.

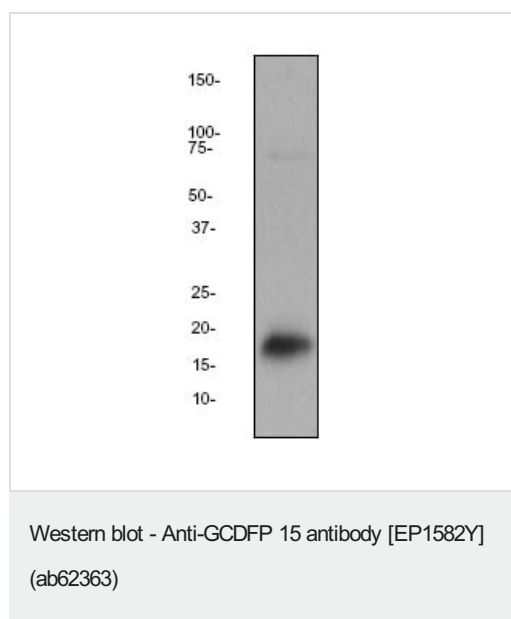
Target

Tissue specificity Expressed in pathological conditions of the mammary gland and in several exocrine tissues, such as the lacrimal, salivary, and sweat glands.

Sequence similarities Belongs to the PIP family.

Cellular localization Secreted.

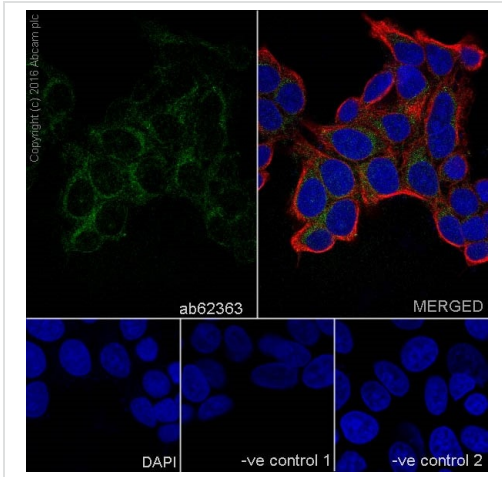
Images



Anti-GCDFP 15 antibody [EP1582Y] (ab62363) at 1/2000 dilution + T47D cell lysate at 10 µg

Secondary
goat anti rabbit HRP at 1/2000 dilution

Predicted band size: 17 kDa
Observed band size: 17 kDa

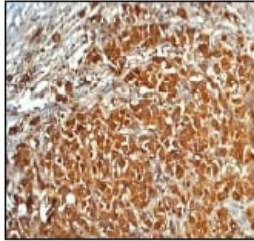


Immunocytochemistry/ Immunofluorescence - Anti-GCDFP 15 antibody [EP1582Y] (ab62363)

Immunocytochemistry/Immunofluorescence analysis of MCF-7 (human breast carcinoma) cells labelling GCDFP 15 with ab62363 at 1/100. Cells were fixed with 4% Paraformaldehyde and permeabilized with 0.1% Triton-X. **ab150077**, Alexa Fluor® 488-conjugated goat anti-rabbit IgG (1/1000) was used as the secondary antibody. Cells were counter-stained with **ab7291** Anti-Tubulin antibody (1/1000) followed by **ab150120** AlexaFluor®594 Goat anti-Mouse secondary (1/1000). Nuclei were counterstained with DAPI (blue).

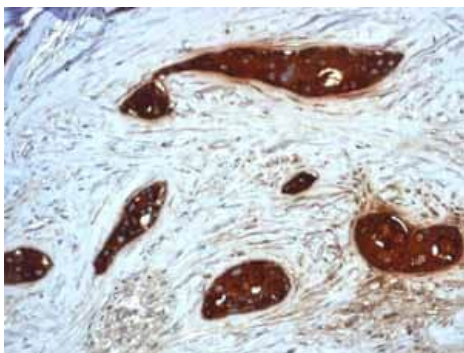
For negative control 1, ab62363 at dilution of 1/100 was used followed by anti-mouse secondary antibody (**ab150120**) at 1/1000 dilution. For negative control 2, **ab7291**; 1/1000 was used followed by anti-rabbit secondary antibody (**ab150077**) at 1/1000 dilution.

Confocal image showing cytoplasmic staining on MCF7 cells.



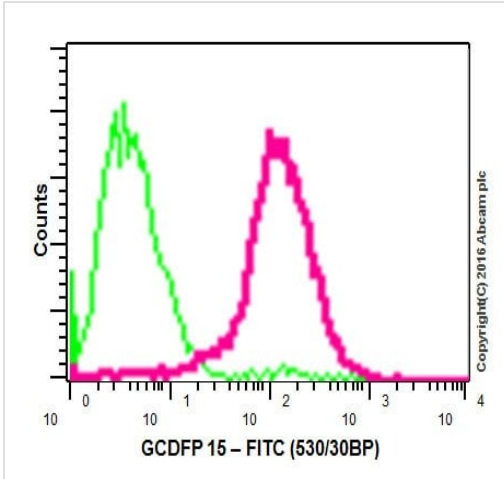
Immunohistochemistry (Formalin/PFA-fixed paraffin-embedded sections) - Anti-GCDFP 15 antibody [EP1582Y] (ab62363)

Immunohistochemical analysis of GCDFP 15 expression in paraffin embedded human breast carcinoma using 1/100-1/250 dilution of ab62363



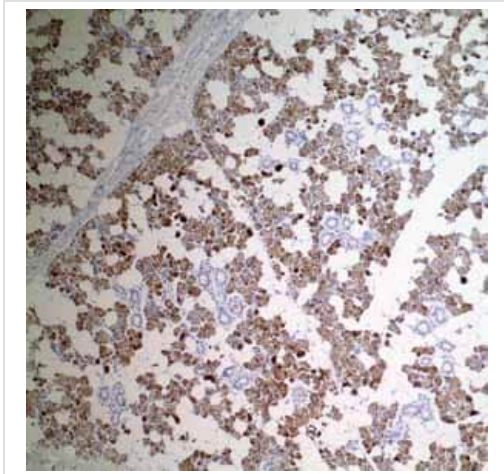
Immunohistochemistry (Formalin/PFA-fixed paraffin-embedded sections) - Anti-GCDFP 15 antibody [EP1582Y] (ab62363)

ab62363 showing positive staining in Cystic breast disease tissue.



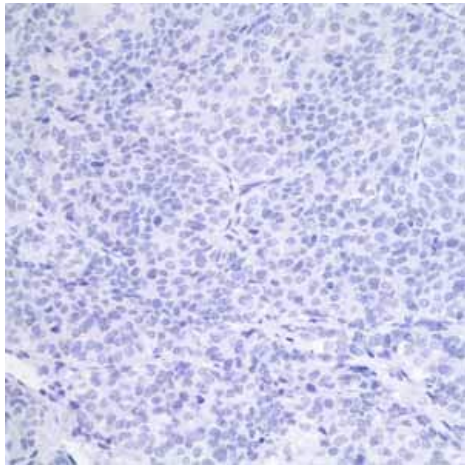
Flow Cytometry (Intracellular) - Anti-GCDFP 15 antibody [EP1582Y] (ab62363)

Intracellular Flow Cytometry analysis of T47D (human mammary gland ductal carcinoma) (pink) with ab62363 at dilution of 1/20. The secondary antibody used was goat anti rabbit IgG (FITC) at dilution of 1/150. Cells were fixed with 2% paraformaldehyde. Isotype control antibody used was Rabbit monoclonal IgG (green).



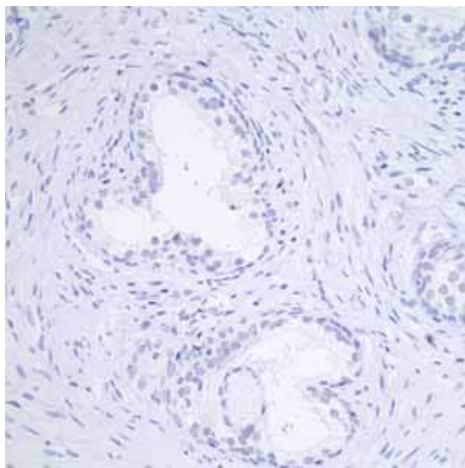
Immunohistochemistry (Formalin/PFA-fixed paraffin-embedded sections) - Anti-GCDFP 15 antibody [EP1582Y] (ab62363)

ab62363 showing positive staining in Salivary gland tissue.



ab62363 showing negative staining in Hepatocellular carcinoma tissue.

Immunohistochemistry (Formalin/PFA-fixed paraffin-embedded sections) - Anti-GCDFP 15 antibody [EP1582Y] (ab62363)



ab62363 showing negative staining in Prostate hyperplasia tissue.

Immunohistochemistry (Formalin/PFA-fixed paraffin-embedded sections) - Anti-GCDFP 15 antibody [EP1582Y] (ab62363)

Why choose a recombinant antibody?



Research with confidence
Consistent and reproducible results



Long-term and scalable supply
Recombinant technology



Success from the first experiment
Confirmed specificity



Ethical standards compliant
Animal-free production

Anti-GCDFP 15 antibody [EP1582Y] (ab62363)

Please note: All products are "FOR RESEARCH USE ONLY. NOT FOR USE IN DIAGNOSTIC PROCEDURES"

Our Abpromise to you: Quality guaranteed and expert technical support

- Replacement or refund for products not performing as stated on the datasheet
- Valid for 12 months from date of delivery
- Response to your inquiry within 24 hours

- We provide support in Chinese, English, French, German, Japanese and Spanish
- Extensive multi-media technical resources to help you
- We investigate all quality concerns to ensure our products perform to the highest standards

If the product does not perform as described on this datasheet, we will offer a refund or replacement. For full details of the Abpromise, please visit <https://www.abcam.com/abpromise> or contact our technical team.

Terms and conditions

- Guarantee only valid for products bought direct from Abcam or one of our authorized distributors