

### Anti-GCET1 antibody [RAM341] ab68889

[10 References](#) [3 Images](#)

#### Overview

<b>Product name</b>	Anti-GCET1 antibody [RAM341]
<b>Description</b>	Mouse monoclonal [RAM341] to GCET1
<b>Host species</b>	Mouse
<b>Tested applications</b>	<b>Suitable for:</b> IHC-P <b>Unsuitable for:</b> IHC-Fr
<b>Species reactivity</b>	<b>Reacts with:</b> Human
<b>Immunogen</b>	Recombinant full length protein corresponding to Human GCET1.
<b>Positive control</b>	IHC-P: Human Burkitt's Lymphoma, Follicular B Cell Lymphoma, Diffuse Large B Cell Lymphoma and Lymphocyte Predominant Hodgkin's Lymphoma tissue. Human tonsil tissue.
<b>General notes</b>	<p>This antibody clone is manufactured by Abcam. If you require a custom buffer formulation or conjugation for your experiments, please contact <a href="mailto:orders@abcam.com">orders@abcam.com</a>.</p> <p>The Life Science industry has been in the grips of a reproducibility crisis for a number of years. Abcam is leading the way in addressing this with our range of recombinant monoclonal antibodies and knockout edited cell lines for gold-standard validation. Please check that this product meets your needs before purchasing.</p> <p>If you have any questions, special requirements or concerns, please send us an inquiry and/or contact our Support team ahead of purchase. Recommended alternatives for this product can be found below, along with publications, customer reviews and Q&amp;As</p>

#### Properties

<b>Form</b>	Liquid
<b>Storage instructions</b>	Shipped at 4°C. Store at +4°C short term (1-2 weeks). Upon delivery aliquot. Store at -20°C or -80°C. Avoid freeze / thaw cycle.
<b>Storage buffer</b>	Preservative: 0.02% Sodium azide Constituent: PBS
<b>Purity</b>	Protein G purified
<b>Purification notes</b>	This antibody was purified using a AKTA prime.
<b>Clonality</b>	Monoclonal
<b>Clone number</b>	RAM341

IsotypeIgG1

Applications

**The Abpromise guarantee** Our **Abpromise guarantee** covers the use of ab68889 in the following tested applications. The application notes include recommended starting dilutions; optimal dilutions/concentrations should be determined by the end user.

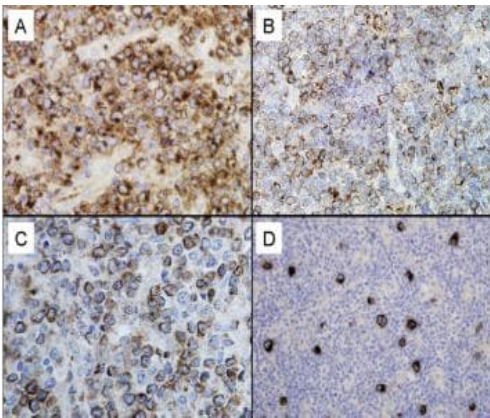
Application	Abreviews	Notes
IHC-P		1/100.

**Application notes** Is unsuitable for IHC-Fr.

Target

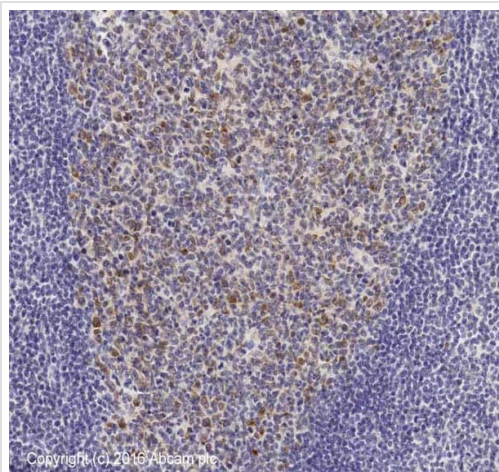
Function	Protease inhibitor that inhibits trypsin and trypsin-like serine proteases (in vitro). Inhibits plasmin and thrombin with lower efficiency (in vitro).
Tissue specificity	Highly expressed in normal germinal center (GC) B-cells and GC B-cell-derived malignancies.
Sequence similarities	Belongs to the serpin family.
Cellular localization	Cytoplasm; Secreted and Membrane.

Images



Immunohistochemistry (Formalin/PFA-fixed paraffin-embedded sections) - Anti-GCET1 antibody [RAM341] (ab68889)

Ab68889 staining human GCET1 in Burkitt's Lymphoma (A), Follicular B Cell Lymphoma (B), Diffuse Large B Cell Lymphoma (C) and Lymphocyte Predominant Hodgkin's Lymphoma (D) by immunohistochemistry using formalin fixed, paraffin embedded tissue.

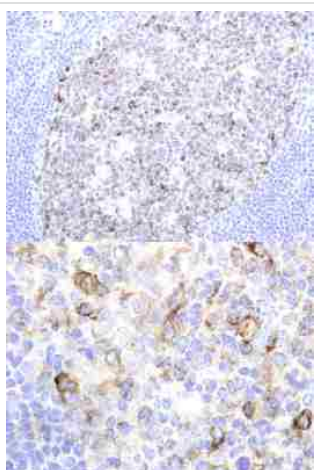


Immunohistochemistry (Formalin/PFA-fixed paraffin-embedded sections) - Anti-GCET1 antibody [RAM341] (ab68889)

IHC image of GCET1 staining in human tonsil formalin fixed paraffin embedded tissue section\*, performed on a Leica Bond™ system using the standard protocol F. The section was pre-treated using heat mediated antigen retrieval with sodium citrate buffer (pH6, epitope retrieval solution 1) for 20 mins. The section was then incubated with ab68889, 10µg/ml, for 15 mins at room temperature and detected using an HRP conjugated compact polymer system. DAB was used as the chromogen. The section was then counterstained with haematoxylin and mounted with DPX.

For other IHC staining systems (automated and non-automated) customers should optimize variable parameters such as antigen retrieval conditions, primary antibody concentration and antibody incubation times.

*\*Tissue obtained from the Human Research Tissue Bank, supported by the NIHR Cambridge Biomedical Research Centre*



Immunohistochemistry (Formalin/PFA-fixed paraffin-embedded sections) - Anti-GCET1 antibody [RAM341] (ab68889)

Ab68889 staining human GCET1 in human tonsil by immunohistochemistry using paraffin embedded tissue.

**Please note:** All products are "FOR RESEARCH USE ONLY. NOT FOR USE IN DIAGNOSTIC PROCEDURES"

**Our Promise to you: Quality guaranteed and expert technical support**

- Replacement or refund for products not performing as stated on the datasheet
- Valid for 12 months from date of delivery
- Response to your inquiry within 24 hours
- We provide support in Chinese, English, French, German, Japanese and Spanish
- Extensive multi-media technical resources to help you
- We investigate all quality concerns to ensure our products perform to the highest standards

If the product does not perform as described on this datasheet, we will offer a refund or replacement. For full details of the Abpromise, please visit <https://www.abcam.com/abpromise> or contact our technical team.

#### **Terms and conditions**

---

- Guarantee only valid for products bought direct from Abcam or one of our authorized distributors