

## Product datasheet

# Anti-GCKR antibody ab154120

[2 Images](#)

### Overview

---

<b>Product name</b>	Anti-GCKR antibody
<b>Description</b>	Rabbit polyclonal to GCKR
<b>Host species</b>	Rabbit
<b>Tested applications</b>	<b>Suitable for:</b> WB
<b>Species reactivity</b>	<b>Reacts with:</b> Mouse, Human
<b>Immunogen</b>	Recombinant fragment, corresponding to a region within amino acids 68-493 of Human GCKR (Q14397).
<b>Positive control</b>	293T, A431, H1299, HeLa, HepG2, Molt4, Raji and Mouse liver whole cell lysates.
<b>General notes</b>	<p>The Life Science industry has been in the grips of a reproducibility crisis for a number of years. Abcam is leading the way in addressing this with our range of recombinant monoclonal antibodies and knockout edited cell lines for gold-standard validation. Please check that this product meets your needs before purchasing.</p> <p>If you have any questions, special requirements or concerns, please send us an inquiry and/or contact our Support team ahead of purchase. Recommended alternatives for this product can be found below, along with publications, customer reviews and Q&amp;As</p>

### Properties

---

<b>Form</b>	Liquid
<b>Storage instructions</b>	Shipped at 4°C. Upon delivery aliquot. Store at -20°C or -80°C. Avoid freeze / thaw cycle.
<b>Storage buffer</b>	pH: 7.00 Preservative: 0.01% Thimerosal (merthiolate) Constituents: 1.21% Tris, 0.75% Glycine, 10% Glycerol (glycerin, glycerine)
<b>Purity</b>	Immunogen affinity purified
<b>Clonality</b>	Polyclonal
<b>Isotype</b>	IgG

### Applications

---

**The Abpromise guarantee** Our **Abpromise guarantee** covers the use of ab154120 in the following tested applications.

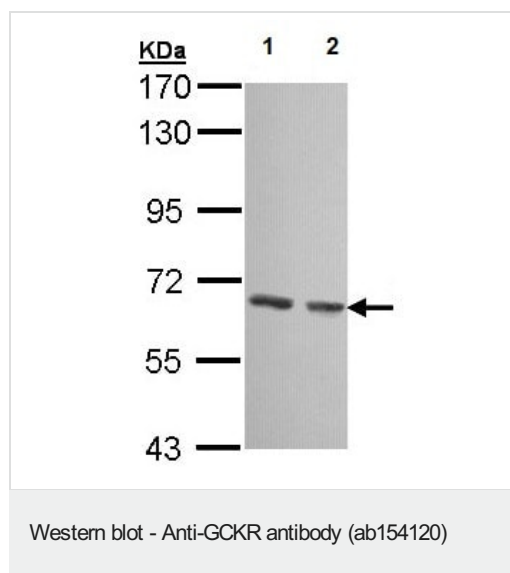
The application notes include recommended starting dilutions; optimal dilutions/concentrations should be determined by the end user.

Application	Abreviews	Notes
WB		1/500 - 1/3000. Predicted molecular weight: 69 kDa.

## Target

<b>Function</b>	Inhibits glucokinase by forming an inactive complex with this enzyme.
<b>Tissue specificity</b>	Found in liver and pancreas. Not detected in muscle, brain, heart, thymus, intestine, uterus, adipose tissue, kidney, adrenal, lung or spleen.
<b>Sequence similarities</b>	Belongs to the GCKR family. Contains 2 SIS domains.

## Images



**All lanes :** Anti-GCKR antibody (ab154120) at 1/1000 dilution

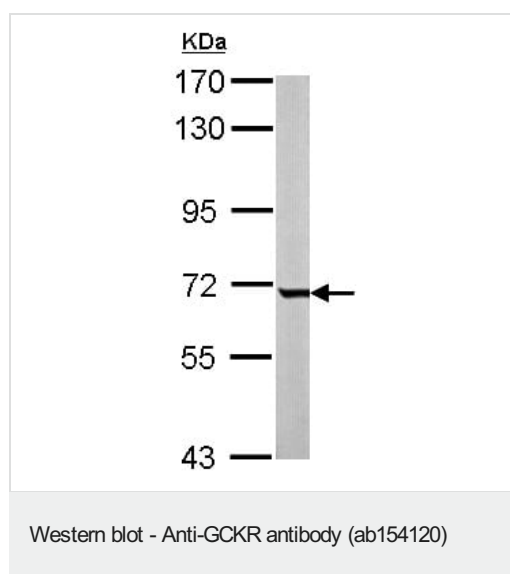
**Lane 1 :** 293T whole cell lysate

**Lane 2 :** A431 whole cell lysate

Lysates/proteins at 30 µg per lane.

**Predicted band size:** 69 kDa

7.5% SDS PAGE



Anti-GCKR antibody (ab154120) at 1/3000 dilution + Mouse liver whole cell lysate at 50 µg

**Predicted band size:** 69 kDa

7.5% SDS PAGE

**Please note:** All products are "FOR RESEARCH USE ONLY. NOT FOR USE IN DIAGNOSTIC PROCEDURES"

### **Our Abpromise to you: Quality guaranteed and expert technical support**

---

- Replacement or refund for products not performing as stated on the datasheet
- Valid for 12 months from date of delivery
- Response to your inquiry within 24 hours
  
- We provide support in Chinese, English, French, German, Japanese and Spanish
- Extensive multi-media technical resources to help you
- We investigate all quality concerns to ensure our products perform to the highest standards

If the product does not perform as described on this datasheet, we will offer a refund or replacement. For full details of the Abpromise, please visit <https://www.abcam.com/abpromise> or contact our technical team.

### **Terms and conditions**

---

- Guarantee only valid for products bought direct from Abcam or one of our authorized distributors