


Product datasheet

Anti-GCLC antibody ab53179

★★★★★ [2 Abreviews](#) [34 References](#) [2 Images](#)

Overview

Product name	Anti-GCLC antibody
Description	Rabbit polyclonal to GCLC
Host species	Rabbit
Tested applications	Suitable for: IHC-P, WB
Species reactivity	Reacts with: Human Predicted to work with: Mouse, Rat 
Immunogen	Synthetic peptide within Rat GCLC aa 250-350 (internal sequence). The exact sequence is proprietary. Database link: P48506
Positive control	IHC-P: Human testis tissue. WB: Kidney lysate
General notes	<p>This product is FOR RESEARCH USE ONLY. For commercial use, please contact partnerships@abcam.com.</p> <p>The Life Science industry has been in the grips of a reproducibility crisis for a number of years. Abcam is leading the way in addressing this with our range of recombinant monoclonal antibodies and knockout edited cell lines for gold-standard validation. Please check that this product meets your needs before purchasing.</p> <p>If you have any questions, special requirements or concerns, please send us an inquiry and/or contact our Support team ahead of purchase. Recommended alternatives for this product can be found below, along with publications, customer reviews and Q&As</p>

Properties

Form	Liquid
Storage instructions	Shipped at 4°C. Upon delivery aliquot and store at -20°C. Avoid freeze / thaw cycles.
Storage buffer	pH: 7.60 Preservative: 0.1% Sodium azide Constituents: PBS, 1% BSA
Purity	Immunogen affinity purified
Purification notes	Affinity purified
Clonality	Polyclonal

Isotype

IgG

Applications

The Abpromise guarantee

Our **Abpromise guarantee** covers the use of ab53179 in the following tested applications.

The application notes include recommended starting dilutions; optimal dilutions/concentrations should be determined by the end user.

Application	Abreviews	Notes
IHC-P		1/100. Perform heat mediated antigen retrieval before commencing with IHC staining protocol.
WB	★★★★★ (1)	Use at an assay dependent concentration.

Target

Pathway

Sulfur metabolism; glutathione biosynthesis; glutathione from L-cysteine and L-glutamate: step 1/2.

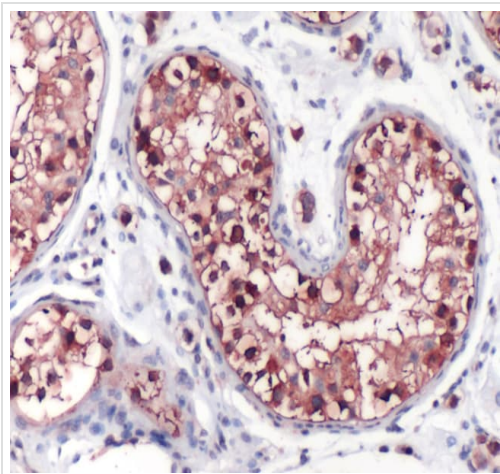
Involvement in disease

Defects in GCLC are the cause of hemolytic anemia (HAGGSD) [MIM:230450].

Sequence similarities

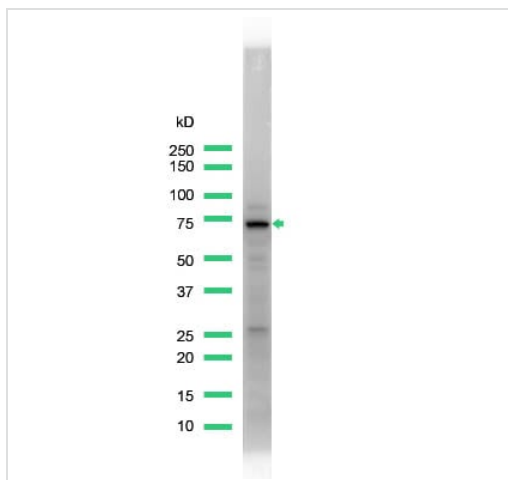
Belongs to the glutamate--cysteine ligase type 3 family.

Images



Immunohistochemistry of Human testis stained with ab53179 at 1/100

Immunohistochemistry (Formalin/PFA-fixed paraffin-embedded sections) - Anti-GCLC antibody (ab53179)



Anti-GCLC antibody (ab53179) at 1/25 dilution + lysate prepared from kidney

Western blot - Anti-GCLC antibody (ab53179)

Please note: All products are "FOR RESEARCH USE ONLY. NOT FOR USE IN DIAGNOSTIC PROCEDURES"

Our Abpromise to you: Quality guaranteed and expert technical support

- Replacement or refund for products not performing as stated on the datasheet
- Valid for 12 months from date of delivery
- Response to your inquiry within 24 hours
- We provide support in Chinese, English, French, German, Japanese and Spanish
- Extensive multi-media technical resources to help you
- We investigate all quality concerns to ensure our products perform to the highest standards

If the product does not perform as described on this datasheet, we will offer a refund or replacement. For full details of the Abpromise, please visit <https://www.abcam.com/abpromise> or contact our technical team.

Terms and conditions

- Guarantee only valid for products bought direct from Abcam or one of our authorized distributors