

Anti-GCSF Receptor antibody ab126167

[6 References](#) [3 Images](#)

Overview

Product name	Anti-GCSF Receptor antibody
Description	Rabbit polyclonal to GCSF Receptor
Host species	Rabbit
Tested applications	Suitable for: WB, IHC-P, ICC/IF
Species reactivity	Reacts with: Human
Immunogen	Recombinant fragment, corresponding to a region within internal sequence amino acids 164-392 of Human GCSF Receptor (UniProt Q99062).
Positive control	IHC-P: Human breast carcinoma tissue. IF: THP-1 cells.
General notes	<p>The Life Science industry has been in the grips of a reproducibility crisis for a number of years. Abcam is leading the way in addressing this with our range of recombinant monoclonal antibodies and knockout edited cell lines for gold-standard validation. Please check that this product meets your needs before purchasing.</p> <p>If you have any questions, special requirements or concerns, please send us an inquiry and/or contact our Support team ahead of purchase. Recommended alternatives for this product can be found below, along with publications, customer reviews and Q&As</p>

Properties

Form	Liquid
Storage instructions	Shipped at 4°C. Upon delivery aliquot. Store at -20°C or -80°C. Avoid freeze / thaw cycle.
Storage buffer	<p>pH: 7.00</p> <p>Preservative: 0.025% Proclin 300</p> <p>Constituents: 79% PBS, 20% Glycerol (glycerin, glycerine)</p>
Purity	Immunogen affinity purified
Clonality	Polyclonal
Isotype	IgG

Applications

The Abpromise guarantee Our **Abpromise guarantee** covers the use of ab126167 in the following tested applications.

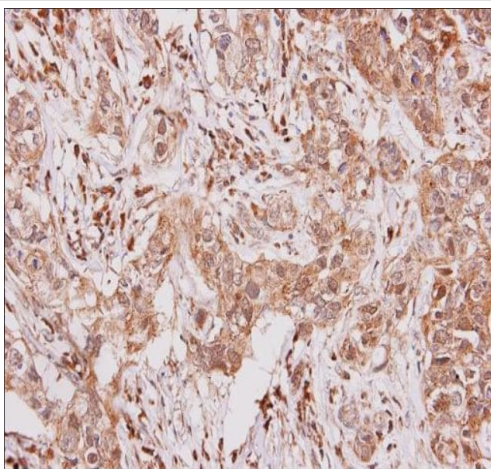
The application notes include recommended starting dilutions; optimal dilutions/concentrations should be determined by the end user.

Application	Abreviews	Notes
WB		1/500 - 1/3000. Predicted molecular weight: 92 kDa.
IHC-P		1/100 - 1/500. Perform heat mediated antigen retrieval before commencing with IHC staining protocol.
ICC/IF		1/100 - 1/500.

Target

Function	Receptor for granulocyte colony-stimulating factor (CSF3), essential for granulocytic maturation. Plays a crucial role in the proliferation, differentiation and survival of cells along the neutrophilic lineage. In addition it may function in some adhesion or recognition events at the cell surface.
Tissue specificity	One or several isoforms have been found in myelogenous leukemia cell line KG-1, leukemia U-937 cell line, in bone marrow cells, placenta, and peripheral blood granulocytes. Isoform GCSFR-2 is found only in leukemia U-937 cells. Isoform GCSFR-3 is highly expressed in placenta.
Involvement in disease	Hereditary neutrophilia
Sequence similarities	Belongs to the type I cytokine receptor family. Type 2 subfamily. Contains 5 fibronectin type-III domains. Contains 1 Ig-like C2-type (immunoglobulin-like) domain.
Domain	The WSXWS motif appears to be necessary for proper protein folding and thereby efficient intracellular transport and cell-surface receptor binding. The box 1 motif is required for JAK interaction and/or activation.
Cellular localization	Secreted and Cell membrane.

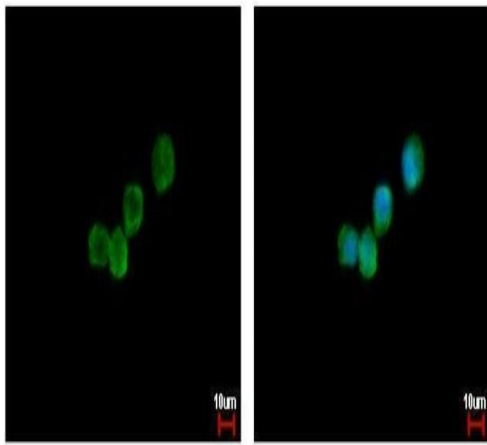
Images



Formalin-fixed, paraffin embedded human breast carcinoma tissue stained for GCSF receptor using ab126167 at 1/250 dilution in immunohistochemical analysis,

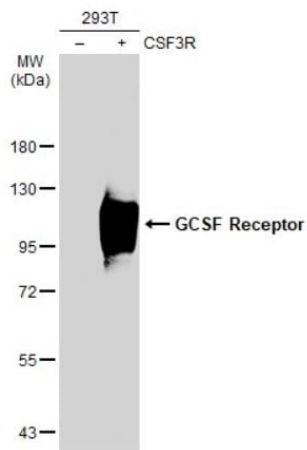
Antigen Retrieval: EDTA based, pH 8.0 buffer, 15min

Immunohistochemistry (Formalin/PFA-fixed paraffin-embedded sections) - Anti-GCSF Receptor antibody (ab126167)



Immunocytochemistry/ Immunofluorescence - Anti-GCSF Receptor antibody (ab126167)

Immunofluorescence analysis of THP-1 (human monocytic leukemia cell line) cells labeling GCSF (green) using ab126167 at 1/500 dilution. Blue: Hoechst 33342 staining. Sample: THP-1 cells were fixed in 4% paraformaldehyde at RT for 15 min.



Western blot - Anti-GCSF Receptor antibody (ab126167)

All lanes : Anti-GCSF Receptor antibody (ab126167) at 1/500 dilution

Lane 1 : Non-transfected HEK-293T (human epithelial cell line from embryonic kidney transformed with large T antigen) whole cell lysate

Lane 2 : Transfected HEK-293T whole cell lysate

Lysates/proteins at 30 µg per lane.

Secondary

All lanes : HRP-conjugated anti-rabbit IgG antibody

Predicted band size: 92 kDa

7.5% SDS-PAGE

Please note: All products are "FOR RESEARCH USE ONLY. NOT FOR USE IN DIAGNOSTIC PROCEDURES"

Our Abpromise to you: Quality guaranteed and expert technical support

- Replacement or refund for products not performing as stated on the datasheet
- Valid for 12 months from date of delivery
- Response to your inquiry within 24 hours
- We provide support in Chinese, English, French, German, Japanese and Spanish
- Extensive multi-media technical resources to help you
- We investigate all quality concerns to ensure our products perform to the highest standards

If the product does not perform as described on this datasheet, we will offer a refund or replacement. For full details of the Abpromise, please visit <https://www.abcam.com/abpromise> or contact our technical team.

Terms and conditions

- Guarantee only valid for products bought direct from Abcam or one of our authorized distributors