

## Product datasheet

# Anti-GDNF Receptor alpha 1/GFRA1 antibody ab8026

★★★★☆ [2 Abreviews](#) [18 References](#) [4 Images](#)

### Overview

---

<b>Product name</b>	Anti-GDNF Receptor alpha 1/GFRA1 antibody
<b>Description</b>	Rabbit polyclonal to GDNF Receptor alpha 1/GFRA1
<b>Host species</b>	Rabbit
<b>Tested applications</b>	<b>Suitable for:</b> IHC-P, WB, ICC/IF
<b>Species reactivity</b>	<b>Reacts with:</b> Human
<b>Immunogen</b>	Synthetic peptide. This information is proprietary to Abcam and/or its suppliers.
<b>General notes</b>	<p>The Life Science industry has been in the grips of a reproducibility crisis for a number of years. Abcam is leading the way in addressing this with our range of recombinant monoclonal antibodies and knockout edited cell lines for gold-standard validation. Please check that this product meets your needs before purchasing.</p> <p>If you have any questions, special requirements or concerns, please send us an inquiry and/or contact our Support team ahead of purchase. Recommended alternatives for this product can be found below, along with publications, customer reviews and Q&amp;As</p>

### Properties

---

<b>Form</b>	Liquid
<b>Storage instructions</b>	Shipped at 4°C. Store at +4°C short term (1-2 weeks). Store at +4°C.
<b>Storage buffer</b>	pH: 7.2 Preservative: 0.02% Sodium azide
<b>Purity</b>	Affinity purified
<b>Clonality</b>	Polyclonal
<b>Isotype</b>	IgG

### Applications

---

**The Abpromise guarantee** Our **Abpromise guarantee** covers the use of ab8026 in the following tested applications. The application notes include recommended starting dilutions; optimal dilutions/concentrations should be determined by the end user.

Application	Abreviews	Notes
IHC-P		
WB		
ICC/IF		

**Application notes**

IHC-P: Use at a concentration of 1 µg/ml. Perform heat mediated antigen retrieval (citrate buffer 10 mM, pH 6.0) before commencing with IHC staining protocol.  
 Immunohistochemistry (PFA fixed): 1/50.  
 WB: 1/500. Detects a band of approximately 50 kDa (predicted molecular weight: 50 kDa).

Not yet tested in other applications.  
 Optimal dilutions/concentrations should be determined by the end user.

**Target**

**Function**

Receptor for GDNF. Mediates the GDNF-induced autophosphorylation and activation of the RET receptor.

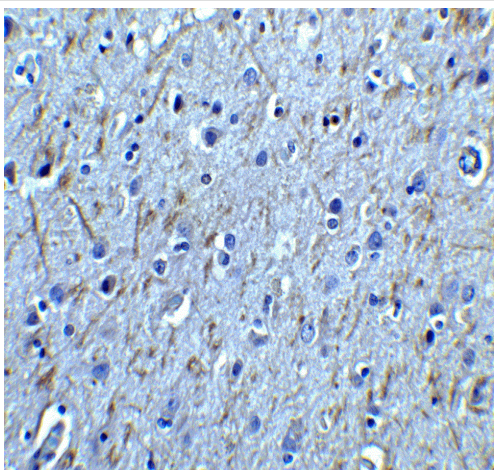
**Sequence similarities**

Belongs to the GDNFR family.

**Cellular localization**

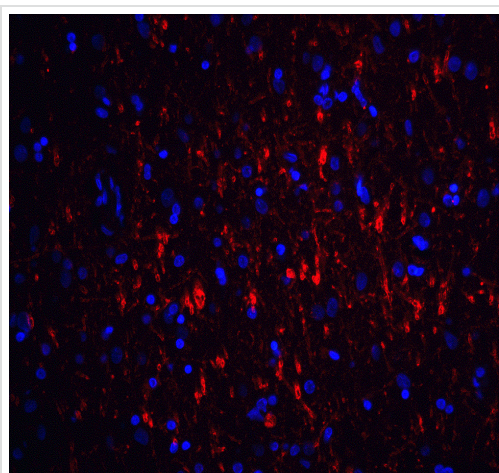
Cell membrane.

**Images**



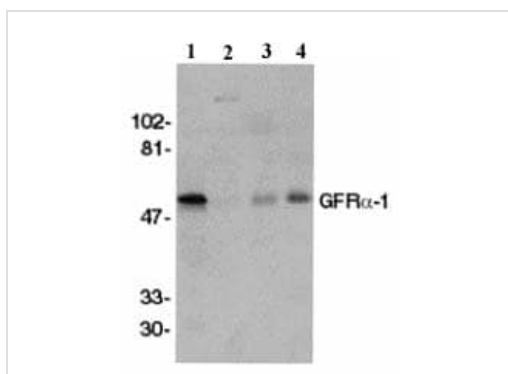
Immunohistochemistry of human brain tissue staining GDNF Receptor alpha 1/GFRA1 using ab8026 at 2.5 µg/ml.

Immunohistochemistry (Formalin/PFA-fixed paraffin-embedded sections) - Anti-GDNF Receptor alpha 1/GFRA1 antibody (ab8026)



Immunocytochemistry/ Immunofluorescence - Anti-GDNF Receptor alpha 1/GFRA1 antibody (ab8026)

Immunocytochemistry of human brain tissue staining GDNF Receptor alpha 1/GFRA1 using ab8026 at 20 µg/ml.



Western blot - Anti-GDNF Receptor alpha 1/GFRA1 antibody (ab8026)

**All lanes** : Anti-GDNF Receptor alpha 1/GFRA1 antibody (ab8026) at 1/500 dilution

**Lane 1** : Crude membrane fractions of human brain

**Lane 2** : Crude membrane fractions of liver

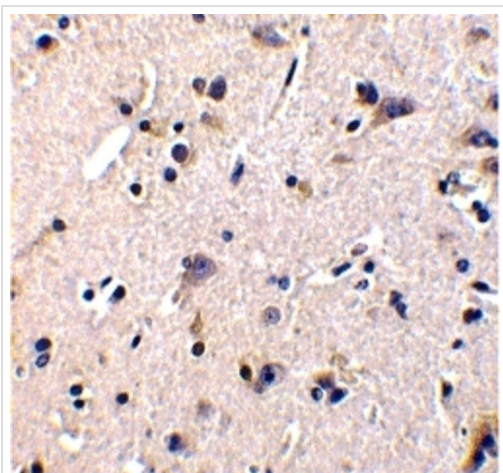
**Lane 3** : Crude membrane fractions of kidney

**Lane 4** : Crude membrane fractions of spleen

**Predicted band size:** 50 kDa

**Observed band size:** 50 kDa

Western blot analysis of GFR alpha 1/GFRA1 in crude membrane fractions of human brain (B), liver (L), kidney (K), and spleen (S), respectively, with ab8026 at 1/500 dilution.



Immunohistochemistry of human brain tissue staining GDNF Receptor alpha 1/GFRA1 using ab8026 at 1 µg/ml.

Immunohistochemistry (Formalin/PFA-fixed paraffin-embedded sections) - Anti-GDNF Receptor alpha 1/GFRA1 antibody (ab8026)

**Please note:** All products are "FOR RESEARCH USE ONLY. NOT FOR USE IN DIAGNOSTIC PROCEDURES"

### **Our Abpromise to you: Quality guaranteed and expert technical support**

---

- Replacement or refund for products not performing as stated on the datasheet
- Valid for 12 months from date of delivery
- Response to your inquiry within 24 hours
  
- We provide support in Chinese, English, French, German, Japanese and Spanish
- Extensive multi-media technical resources to help you
- We investigate all quality concerns to ensure our products perform to the highest standards

If the product does not perform as described on this datasheet, we will offer a refund or replacement. For full details of the Abpromise, please visit <https://www.abcam.com/abpromise> or contact our technical team.

### **Terms and conditions**

---

- Guarantee only valid for products bought direct from Abcam or one of our authorized distributors