




## Product datasheet

# Anti-Geminin antibody ab229009

4 Images

### Overview

---

<b>Product name</b>	Anti-Geminin antibody
<b>Description</b>	Rabbit polyclonal to Geminin
<b>Host species</b>	Rabbit
<b>Tested applications</b>	<b>Suitable for:</b> WB, ICC/IF, IP, IHC-P
<b>Species reactivity</b>	<b>Reacts with:</b> Human <b>Predicted to work with:</b> Rhesus monkey 
<b>Immunogen</b>	Recombinant full length protein corresponding to Human Geminin aa 1 to the C-terminus. Database link: <a href="#">O75496</a>  <a href="#">Run BLAST with</a>  <a href="#">Run BLAST with</a>
<b>Positive control</b>	WB: HCT 116 whole cell lysate. IP: HCT 116 whole cell extract. IHC-P: Human breast cancer tissue. ICC/IF: HeLa cells.
<b>General notes</b>	<p>The Life Science industry has been in the grips of a reproducibility crisis for a number of years. Abcam is leading the way in addressing this with our range of recombinant monoclonal antibodies and knockout edited cell lines for gold-standard validation. Please check that this product meets your needs before purchasing.</p> <p>If you have any questions, special requirements or concerns, please send us an inquiry and/or contact our Support team ahead of purchase. Recommended alternatives for this product can be found below, along with publications, customer reviews and Q&amp;As</p>

### Properties

---

<b>Form</b>	Liquid
<b>Storage instructions</b>	Shipped at 4°C. Store at +4°C short term (1-2 weeks). Upon delivery aliquot. Store at -20°C long term. Avoid freeze / thaw cycle.
<b>Storage buffer</b>	pH: 7.00 Preservative: 0.01% Thimerosal (merthiolate) Constituents: 1.21% Tris, 0.75% Glycine, 20% Glycerol (glycerin, glycerine)
<b>Purity</b>	Immunogen affinity purified
<b>Clonality</b>	Polyclonal
<b>Isotype</b>	IgG

## Applications

**The Abpromise guarantee** Our **Abpromise guarantee** covers the use of ab229009 in the following tested applications.

The application notes include recommended starting dilutions; optimal dilutions/concentrations should be determined by the end user.

Application	Abreviews	Notes
WB		1/500 - 1/3000. Predicted molecular weight: 24 kDa.
ICC/IF		1/100 - 1/1000.
IP		1/100 - 1/500.
IHC-P		1/100 - 1/1000.

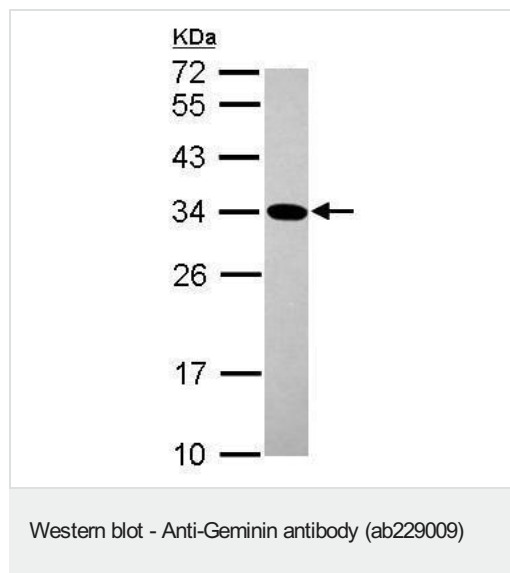
## Target

**Function** Inhibits DNA replication by preventing the incorporation of MCM complex into prereplication complex (pre-RC). It is degraded during the mitotic phase of the cell cycle. Its destruction at the metaphase-anaphase transition permits replication in the succeeding cell cycle.

**Sequence similarities** Belongs to the geminin family.

**Developmental stage** Absent during G1 phase, accumulates during S, G2, and M phases, and disappears at the time of the metaphase-anaphase transition.

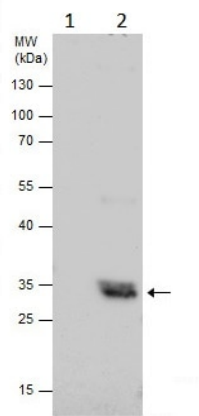
## Images



Anti-Geminin antibody (ab229009) at 1/1000 dilution + HCT 116  
(Human colorectal carcinoma cell line) whole cell lysate at 30  $\mu$ g

**Predicted band size:** 24 kDa

12% SDS PAGE



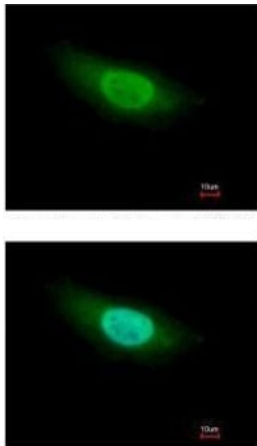
Immunoprecipitation - Anti-Geminin antibody  
(ab229009)

Geminin was immunoprecipitated from HCT 116 (human colorectal carcinoma cell line) whole cell extract with 5  $\mu$ g of ab229009.

Western blot was performed from the immunoprecipitate using ab229009. Anti-Rabbit IgG was used as a secondary reagent.

**Lane 1:** Control IgG instead of ab229009 in HCT 116 whole cell extract.

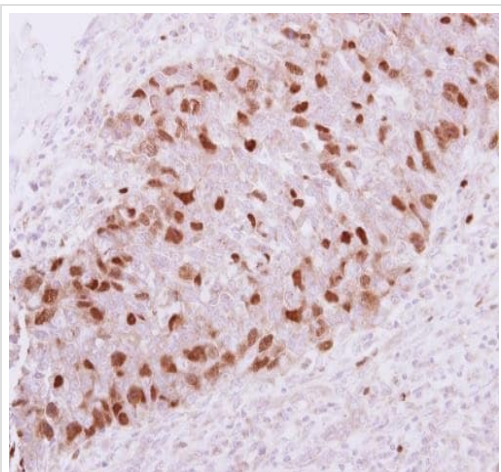
**Lane 2:** ab229009 IP in HCT116 whole cell extract.



Immunocytochemistry/ Immunofluorescence - Anti-Geminin antibody (ab229009)

Paraformaldehyde-fixed HeLa (human epithelial cell line from cervix adenocarcinoma) cells stained for Geminin (green) using ab229009 at 1/500 dilution in ICC/IF.

Nuclear counterstain: Hoechst 33342 (blue).



Immunohistochemistry (Formalin/PFA-fixed paraffin-embedded sections) - Anti-Geminin antibody (ab229009)

Paraffin-embedded human breast cancer tissue stained for Geminin using ab229009 at 1/250 dilution in immunohistochemical analysis.

**Please note:** All products are "FOR RESEARCH USE ONLY. NOT FOR USE IN DIAGNOSTIC PROCEDURES"

### Our Abpromise to you: Quality guaranteed and expert technical support

---

- Replacement or refund for products not performing as stated on the datasheet
- Valid for 12 months from date of delivery
- Response to your inquiry within 24 hours
- We provide support in Chinese, English, French, German, Japanese and Spanish
- Extensive multi-media technical resources to help you
- We investigate all quality concerns to ensure our products perform to the highest standards

If the product does not perform as described on this datasheet, we will offer a refund or replacement. For full details of the Abpromise, please visit <https://www.abcam.com/abpromise> or contact our technical team.

### Terms and conditions

---

- Guarantee only valid for products bought direct from Abcam or one of our authorized distributors