

## Product datasheet

### Anti-GEN1 antibody [EPR16863] ab198989

Recombinant **RabMAb**

★★★★★ **1 Abreviews** [3 Images](#)

#### Overview

<b>Product name</b>	Anti-GEN1 antibody [EPR16863]
<b>Description</b>	Rabbit monoclonal [EPR16863] to GEN1
<b>Host species</b>	Rabbit
<b>Tested applications</b>	<b>Suitable for:</b> WB
<b>Species reactivity</b>	<b>Reacts with:</b> Rat, Human
<b>Immunogen</b>	Recombinant fragment. This information is proprietary to Abcam and/or its suppliers.
<b>Positive control</b>	WB: HeLa, 293, SH-SY5Y, MDA-MB-435S and C6 whole cell lysates; rat kidney tissue lysate.
<b>General notes</b>	<p>This product is a recombinant monoclonal antibody, which offers several advantages including:</p> <ul style="list-style-type: none"> <li>- High batch-to-batch consistency and reproducibility</li> <li>- Improved sensitivity and specificity</li> <li>- Long-term security of supply</li> <li>- Animal-free production</li> </ul> <p>For more information <a href="#">see here</a>.</p> <p>Our RabMAb<sup>®</sup> technology is a patented hybridoma-based technology for making rabbit monoclonal antibodies. For details on our patents, please refer to <a href="#">RabMAb<sup>®</sup> patents</a>.</p>

#### Properties

<b>Form</b>	Liquid
<b>Storage instructions</b>	Shipped at 4°C. Store at +4°C short term (1-2 weeks). Upon delivery aliquot. Store at -20°C long term. Avoid freeze / thaw cycle.
<b>Storage buffer</b>	<p>pH: 7.2</p> <p>Preservative: 0.01% Sodium azide</p> <p>Constituents: 0.05% BSA, 40% Glycerol (glycerin, glycerine), 59% PBS</p>
<b>Purity</b>	Protein A purified
<b>Clonality</b>	Monoclonal
<b>Clone number</b>	EPR16863
<b>Isotype</b>	IgG

## Applications

### The Abpromise guarantee

Our **Abpromise guarantee** covers the use of ab198989 in the following tested applications.

The application notes include recommended starting dilutions; optimal dilutions/concentrations should be determined by the end user.

Application	Abreviews	Notes
WB	★★★★★ (1)	1/1000. Detects a band of approximately 103 kDa (predicted molecular weight: 103 kDa).

## Target

### Function

Endonuclease which cleaves flap structures at the junction between single-stranded DNA and double-stranded DNA. Specific for 5'-overhanging flap structures in which the 5'-upstream of the flap is completely double-stranded. Prefers the blocked-flap structures similar to those occurring at replication forks, in which the 5' single-strand overhang of the flap is double-stranded.

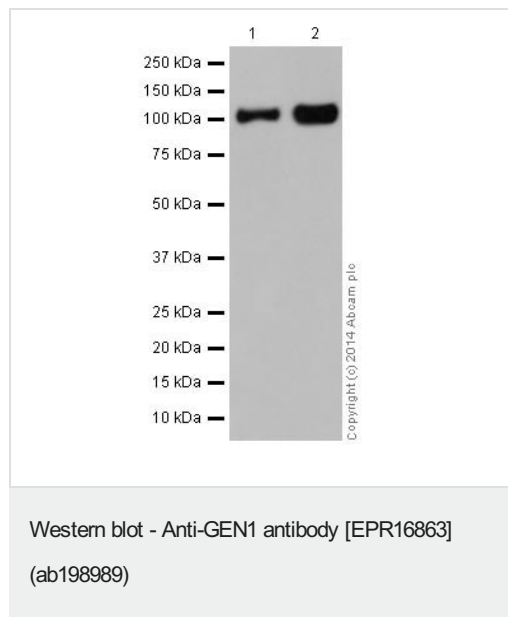
### Sequence similarities

Belongs to the XPG/RAD2 endonuclease family. GEN subfamily.

### Cellular localization

Nucleus.

## Images



**All lanes :** Anti-GEN1 antibody [EPR16863] (ab198989) at 1/1000 dilution

**Lane 1 :** Rat kidney tissue lysate

**Lane 2 :** C6 (rat glial tumor cell line) whole cell lysate

Lysates/proteins at 10 µg per lane.

### Secondary

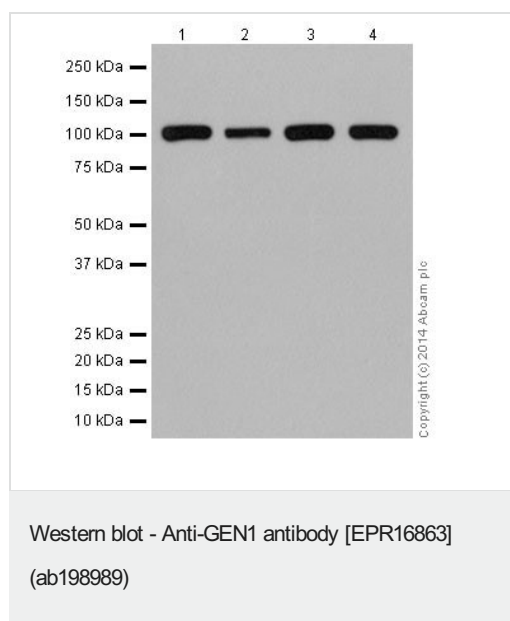
**All lanes :** Goat Anti-Rabbit IgG H&L (HRP) (**ab97051**) at 1/1000 dilution

**Predicted band size:** 103 kDa

**Observed band size:** 103 kDa

Blocking/Dilution buffer: 5% NFDM/TBST

Exposure time: 3 minutes



**All lanes :** Anti-GEN1 antibody [EPR16863] (ab198989) at 1/1000 dilution

**Lane 1 :** HeLa (Human epithelial cell line from cervix adenocarcinoma) whole cell lysate

**Lane 2 :** 293 (human embryonic kidney) whole cell lysate

**Lane 3 :** SH-SY5Y (human neuroblastoma cell line from bone marrow)

**Lane 4 :** MDA-MB-435S (human ductal carcinoma cell line)

Lysates/proteins at 20 µg per lane.

### Secondary

**All lanes :** Goat Anti-Rabbit IgG H&L (HRP) (**ab97051**) at 1/1000 dilution





**Predicted band size:** 103 kDa

**Observed band size:** 103 kDa

Blocking/Dilution buffer: 5% NFDM/TBST

Exposure time: 1 minute

Why choose a recombinant antibody?

 <p><b>Research with confidence</b> Consistent and reproducible results</p>	 <p><b>Long-term and scalable supply</b> Recombinant technology</p>
 <p><b>Success from the first experiment</b> Confirmed specificity</p>	 <p><b>Ethical standards compliant</b> Animal-free production</p>

Anti-GEN1 antibody [EPR16863] (ab198989)

**Please note:** All products are "FOR RESEARCH USE ONLY. NOT FOR USE IN DIAGNOSTIC PROCEDURES"

## **Our Abpromise to you: Quality guaranteed and expert technical support**

---

- Replacement or refund for products not performing as stated on the datasheet
- Valid for 12 months from date of delivery
- Response to your inquiry within 24 hours
  
- We provide support in Chinese, English, French, German, Japanese and Spanish
- Extensive multi-media technical resources to help you
- We investigate all quality concerns to ensure our products perform to the highest standards

If the product does not perform as described on this datasheet, we will offer a refund or replacement. For full details of the Abpromise, please visit <https://www.abcam.com/abpromise> or contact our technical team.

## **Terms and conditions**

---

- Guarantee only valid for products bought direct from Abcam or one of our authorized distributors