

Anti-GIP antibody ab25973

★★★★★ [1 Abreviews](#) [3 Images](#)

Overview

Product name	Anti-GIP antibody
Description	Rabbit polyclonal to GIP
Host species	Rabbit
Specificity	ab25973 recognises GIP (G protein coupled receptor interacting protein 1, GIP).
Tested applications	Suitable for: IHC-P, ICC/IF, WB
Species reactivity	Reacts with: Human
Immunogen	Synthetic peptide corresponding to Human GIP (N terminal). (Peptide available as ab39751)
General notes	<p>The Life Science industry has been in the grips of a reproducibility crisis for a number of years. Abcam is leading the way in addressing this with our range of recombinant monoclonal antibodies and knockout edited cell lines for gold-standard validation. Please check that this product meets your needs before purchasing.</p> <p>If you have any questions, special requirements or concerns, please send us an inquiry and/or contact our Support team ahead of purchase. Recommended alternatives for this product can be found below, along with publications, customer reviews and Q&As</p>

Properties

Form	Liquid
Storage instructions	Shipped at 4°C. Store at +4°C.
Storage buffer	pH: 7.2 Preservative: 0.02% Sodium azide Constituent: PBS
Purity	Immunogen affinity purified
Clonality	Polyclonal
Isotype	IgG

Applications

The Abpromise guarantee Our **Abpromise guarantee** covers the use of ab25973 in the following tested applications.

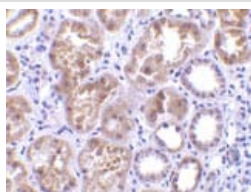
The application notes include recommended starting dilutions; optimal dilutions/concentrations should be determined by the end user.

Application	Abreviews	Notes
IHC-P		Use a concentration of 10 µg/ml.
ICC/IF		Use a concentration of 20 µg/ml.
WB		Use a concentration of 1 µg/ml. Predicted molecular weight: 32 kDa.

Target

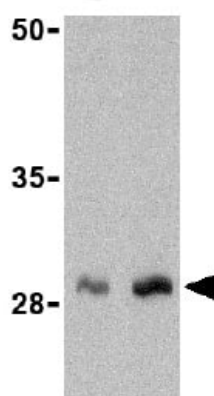
Sequence similarities	Contains 1 C1q domain. Contains 1 collagen-like domain.
Cellular localization	Secreted.

Images



Immunohistochemistry (Formalin/PFA-fixed paraffin-embedded sections) - Anti-GIP antibody (ab25973)

ab25973 at 10µg/ml staining GIP in human kidney tissue by IHC



Western blot - Anti-GIP antibody (ab25973)

Lane 1 : Anti-GIP antibody (ab25973) at 1 µg/ml

Lane 2 : Anti-GIP antibody (ab25973) at 2 µg/ml

All lanes : Human kidney
cell lysate

Predicted band size: 32 kDa

Observed band size: 30 kDa

Immunocytochemistry/ Immunofluorescence - Anti-GIP antibody (ab25973)

Immunofluorescence of GIP in Human Kidney cells using ab25973 at 20 ug/ml.

Please note: All products are "FOR RESEARCH USE ONLY. NOT FOR USE IN DIAGNOSTIC PROCEDURES"

Our Abpromise to you: Quality guaranteed and expert technical support

- Replacement or refund for products not performing as stated on the datasheet
- Valid for 12 months from date of delivery
- Response to your inquiry within 24 hours

- We provide support in Chinese, English, French, German, Japanese and Spanish
- Extensive multi-media technical resources to help you
- We investigate all quality concerns to ensure our products perform to the highest standards

If the product does not perform as described on this datasheet, we will offer a refund or replacement. For full details of the Abpromise, please visit <https://www.abcam.com/abpromise> or contact our technical team.

Terms and conditions

- Guarantee only valid for products bought direct from Abcam or one of our authorized distributors