


## Product datasheet

# Anti-GIPC1 antibody ab5951

★★★★☆ [3 Abreviews](#) [4 References](#) [4 Images](#)

### Overview

---

<b>Product name</b>	Anti-GIPC1 antibody
<b>Description</b>	Goat polyclonal to GIPC1
<b>Host species</b>	Goat
<b>Tested applications</b>	<b>Suitable for:</b> IHC-P, WB
<b>Species reactivity</b>	<b>Reacts with:</b> Human <b>Predicted to work with:</b> Mouse, Rat 
<b>Immunogen</b>	Synthetic peptide corresponding to Human GIPC1 aa 300 to the C-terminus (C terminal). (NP_974197.1; NP_974199.1; NP_974196.1; NP_974198.1; NP_974223.1) Database link: <a href="#">O14908</a>

 [Run BLAST with](#)

 [Run BLAST with](#)

### General notes

The Life Science industry has been in the grips of a reproducibility crisis for a number of years. Abcam is leading the way in addressing this with our range of recombinant monoclonal antibodies and knockout edited cell lines for gold-standard validation. Please check that this product meets your needs before purchasing.

If you have any questions, special requirements or concerns, please send us an inquiry and/or contact our Support team ahead of purchase. Recommended alternatives for this product can be found below, along with publications, customer reviews and Q&As

### Properties

---

<b>Form</b>	Liquid
<b>Storage instructions</b>	Shipped at 4°C. Upon delivery aliquot and store at -20°C or -80°C. Avoid repeated freeze / thaw cycles.
<b>Storage buffer</b>	pH: 7.30 Preservative: 0.02% Sodium azide Constituents: Tris buffered saline, 0.5% BSA
<b>Purity</b>	Immunogen affinity purified
<b>Purification notes</b>	Purified from goat serum by ammonium sulphate precipitation followed by antigen affinity chromatography using the immunizing peptide.
<b>Clonality</b>	Polyclonal
<b>Isotype</b>	IgG

## Applications

### The Abpromise guarantee

Our **Abpromise guarantee** covers the use of ab5951 in the following tested applications.

The application notes include recommended starting dilutions; optimal dilutions/concentrations should be determined by the end user.

Application	Abreviews	Notes
IHC-P	★★★★☆ (1)	Use at an assay dependent concentration.
WB	★★★★☆ (2)	Use a concentration of 1 - 3 µg/ml. Detects a band of approximately 40 kDa (predicted molecular weight: 38 kDa). 1 hour primary incubation is recommended for this product.

## Target

### Function

May be involved in G protein-linked signaling.

### Tissue specificity

Widely expressed.

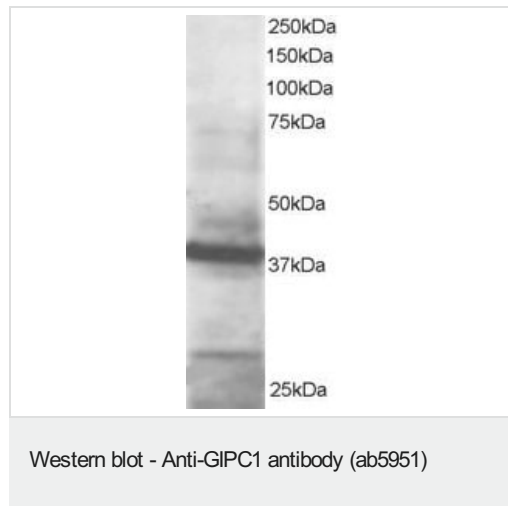
### Sequence similarities

Belongs to the GIPC family.  
Contains 1 PDZ (DHR) domain.

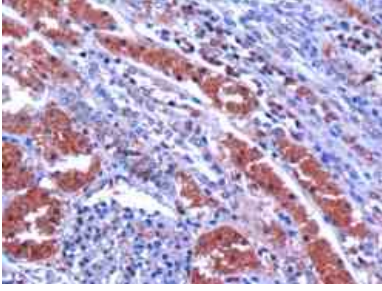
### Cellular localization

Cytoplasm. Membrane.

## Images



ab5951 at 1µg/ml staining GIPC1 at approximately 40kDa in HeLa Lysate by Western blot (ECL). ab5951 at 1µg/ml staining GIPC1 at approximately 40kDa in HeLa Lysate by Western blot (ECL).



Immunohistochemistry (Formalin/PFA-fixed paraffin-embedded sections) - Anti-GIPC1 antibody (ab5951)

Ab5951 (10ug/ml) staining human GIPC1 in human kidney by immunohistochemistry using paraffin embedded tissue. Microwaved antigen retrieval with Tris/EDTA buffer pH9, HRP-staining.



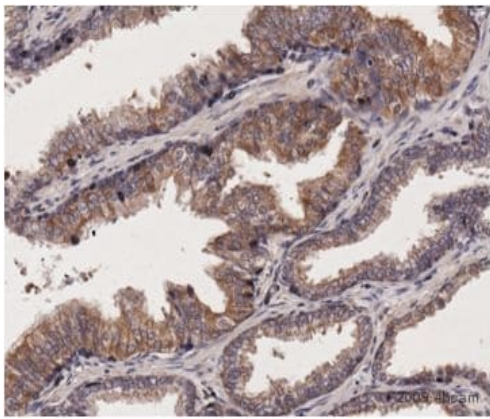
Western blot - Anti-GIPC1 antibody (ab5951)

Anti-GIPC1 antibody (ab5951) at 0.03 µg/ml + Human HeLa cell lysate (RIPA buffer, 35µg total protein per lane)

**Predicted band size:** 38 kDa

**Observed band size:** 24,38 kDa

Primary incubated for 1 hour. Detected by western blot using chemiluminescence.



Immunohistochemistry (Formalin/PFA-fixed paraffin-embedded sections) - Anti-GIPC1 antibody (ab5951)

This image is courtesy of an anonymous Abreview

ab5951 staining GIPC1 in human prostate tissue section by immunohistochemistry (formalin/PFA-fixed paraffin-embedded sections). Cells were formalin fixed prior to blocking in 10% serum for 20 minutes at RT. The primary antibody was diluted 1/250 and incubated with the sample for 24 hour at 4°C. A biotin conjugated rabbit anti-goat antibody, diluted 1/250, was used as the secondary.

**Please note:** All products are "FOR RESEARCH USE ONLY. NOT FOR USE IN DIAGNOSTIC PROCEDURES"

**Our Abpromise to you: Quality guaranteed and expert technical support**

- Replacement or refund for products not performing as stated on the datasheet

- Valid for 12 months from date of delivery
- Response to your inquiry within 24 hours
- We provide support in Chinese, English, French, German, Japanese and Spanish
- Extensive multi-media technical resources to help you
- We investigate all quality concerns to ensure our products perform to the highest standards

If the product does not perform as described on this datasheet, we will offer a refund or replacement. For full details of the Abpromise, please visit <https://www.abcam.com/abpromise> or contact our technical team.

### **Terms and conditions**

---

- Guarantee only valid for products bought direct from Abcam or one of our authorized distributors