

# Anti-Glucose Transporter GLUT3 antibody ab234756

[1 Abreviews](#) [2 Images](#)

### Overview

---

<b>Product name</b>	Anti-Glucose Transporter GLUT3 antibody
<b>Description</b>	Rabbit polyclonal to Glucose Transporter GLUT3
<b>Host species</b>	Rabbit
<b>Tested applications</b>	<b>Suitable for:</b> IHC-P, ICC/IF
<b>Species reactivity</b>	<b>Reacts with:</b> Human
<b>Immunogen</b>	Recombinant fragment corresponding to Human Glucose Transporter GLUT3 aa 200-300. Database link: <a href="#">P11169</a> <a href="#">Run BLAST with</a> <a href="#">Run BLAST with</a>
<b>Positive control</b>	IHC-P: Human spleen tissue. ICC/IF: HepG2 cells.
<b>General notes</b>	<p>The Life Science industry has been in the grips of a reproducibility crisis for a number of years. Abcam is leading the way in addressing this with our range of recombinant monoclonal antibodies and knockout edited cell lines for gold-standard validation. Please check that this product meets your needs before purchasing.</p> <p>If you have any questions, special requirements or concerns, please send us an inquiry and/or contact our Support team ahead of purchase. Recommended alternatives for this product can be found below, along with publications, customer reviews and Q&amp;As</p>

### Properties

---

<b>Form</b>	Liquid
<b>Storage instructions</b>	Shipped at 4°C. Store at +4°C short term (1-2 weeks). Upon delivery aliquot. Store at -20°C long term. Avoid freeze / thaw cycle.
<b>Storage buffer</b>	pH: 7.40 Preservative: 0.03% Proclin 300 Constituents: PBS, 50% Glycerol (glycerin, glycerine)
<b>Purity</b>	Protein G purified
<b>Purification notes</b>	>95%.
<b>Clonality</b>	Polyclonal
<b>Isotype</b>	IgG

## Applications

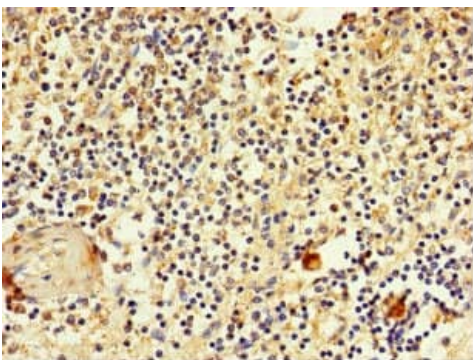
**The Abpromise guarantee** Our **Abpromise guarantee** covers the use of ab234756 in the following tested applications. The application notes include recommended starting dilutions; optimal dilutions/concentrations should be determined by the end user.

Application	Abreviews	Notes
IHC-P		1/20 - 1/200.
ICC/IF		1/50 - 1/200.

## Target

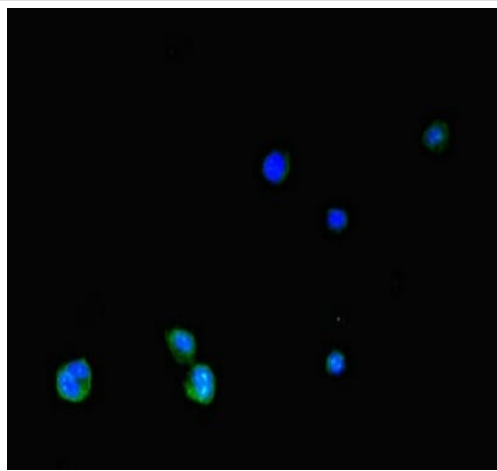
<b>Function</b>	Facilitative glucose transporter. Probably a neuronal glucose transporter.
<b>Tissue specificity</b>	Highly expressed in brain. Expressed in many tissues.
<b>Sequence similarities</b>	Belongs to the major facilitator superfamily. Sugar transporter (TC 2.A.1.1) family. Glucose transporter subfamily.
<b>Cellular localization</b>	Membrane.

## Images



Paraffin-embedded human spleen tissue stained for Glucose Transporter GLUT3 using ab234756 at 1/100 dilution in immunohistochemical analysis.

Immunohistochemistry (Formalin/PFA-fixed paraffin-embedded sections) - Anti-Glucose Transporter GLUT3 antibody (ab234756)



Immunocytochemistry/ Immunofluorescence - Anti-Glucose Transporter GLUT3 antibody (ab234756)

HepG2 (human liver hepatocellular carcinoma cell line) cells labeling Glucose Transporter GLUT3 (green) using ab234756 at 1/100 dilution in ICC/IF. Secondary antibody was Alexa Fluor® 488-conjugated goat anti-rabbit IgG (H+L).

**Please note:** All products are "FOR RESEARCH USE ONLY. NOT FOR USE IN DIAGNOSTIC PROCEDURES"

### Our Abpromise to you: Quality guaranteed and expert technical support

---

- Replacement or refund for products not performing as stated on the datasheet
- Valid for 12 months from date of delivery
- Response to your inquiry within 24 hours
- We provide support in Chinese, English, French, German, Japanese and Spanish
- Extensive multi-media technical resources to help you
- We investigate all quality concerns to ensure our products perform to the highest standards

If the product does not perform as described on this datasheet, we will offer a refund or replacement. For full details of the Abpromise, please visit <https://www.abcam.com/abpromise> or contact our technical team.

### Terms and conditions

---

- Guarantee only valid for products bought direct from Abcam or one of our authorized distributors